

**Protect your
investment.**

**Improve the health
of your fish.**

High performance equipment for Aquaculture.



what makes us unique and valuable to you?

We are problem solvers

Nationwide, our people have the collective knowledge and experience that spans years of service; you benefit from that every day. No matter the industry you are in; Construction, Forestry, Marine or Agriculture if you have a problem, Cookes can solve it. That means better performance and profitability for your business.

International quality from local branches

You can shop at your local Cookes branch for a huge range of world-class industrial products. Our people enjoy making relationships personal. We aim to understand your industry, your business, and your unique needs. What you need is not on the shelf? Or in the warehouse? We can supply products from any of our 11 national branches. Have a problem? We can design and tailor a solution to meet your needs and requirements.

Health and safety come first

Our business revolves around the use and support of industrial machinery where any unsafe practice can lead to serious harm. Safety always comes first. Whether we're manufacturing, testing, certifying or supplying; health and safety is paramount for our employees, contractors, and customers.

We are experts in ensuring that the equipment you use is fit for purpose. Cookes in-house testing, height safety services, mobile testing services, non-destructive testing and specialist rigging services ensure your equipment meets and or exceeds all relevant AS/NZS standards.

Quality Assured

Cookes is absolutely committed to supplying quality products and service. We have held ISO 9001 certification since 1992 and have expanded this to include the ISO 14001 and OHSAS 18001 certification, demonstrating our commitment to quality, sustainability and safety. We have achieved Full Member accreditation with LEEA, the internationally recognised standard in lifting, providing further assurance of our ability to deliver quality solutions that consistently meet or exceed your needs. More recently we have become IANZ accredited for the inspection and testing of wire ropes.

Freephone 0508 274 366
contact@cookes.co.nz
www.cookes.co.nz

CONTENTS

OUR HISTORY	4
OUR BRANDS	6
AQUACULTURE SERVICES	8
SALMON FARMING	10
MUSSEL FARMING	26
ACCESSORIES	30
NET LOFT & NET SERVICES	36
OUR LOCATIONS	39



COOKES: OUR ORGANISATION, OUR HISTORY

Cookes is the name at the very heart of how this country was built: our products have been doing New Zealand's heavy lifting, hauling, hoisting, trawling, digging (and more) for over a century.

Leaders in the supply of aquaculture products and services.

As the New Zealand brand of Bridon-Bekaert The Ropes Group, Cookes is a leader in the development, manufacturing, sales and testing and inspection of steel wire, synthetic fibre ropes & lubricants. Couple this with our decades of experience working alongside the commercial fishing & aquaculture sectors supplying high performance nets, floats and services and you have New Zealand's leader in performance driven solutions for fishing & aquaculture.

market leading solutions for aquaculture

BRIDON · BEKAERT

THE ROPES GROUP

Bridon-Bekaert Ropes Group is the world's premier supplier of mission-critical advanced cords, steel wire ropes, and synthetic fibre ropes.

As a leading innovator, developer and producer of the best performing ropes and advanced cords globally, the Group provides superior value solutions to the oil & gas, mining, crane, elevator and other industrial sectors.

Two of the most enduring wire and rope pioneers joined forces in 2016 to make this ambition real. Bridon-Bekaert Ropes Group has a global manufacturing footprint and employs approximately 2500 people worldwide.



Gourock - supplying New Zealand business since 1900



Cookes established in Auckland 1911



Cookes 1961



1975 Gourock



2013 Cookes & Gourock come together



2016 Cookes a Bridon-Bekaert Ropes Group brand

our partner brands.

AUTHORISED DISTRIBUTORS FOR THE WORLDS LEADING BRANDS

BRIDON

BlueStrand

ScanRope

VAN BEEST

Crosby

DYNAMICA
Ropes ApS

D | S | R

MØRENOT
FISHERY

Gourock

we are active in many industries.



COOKES360

Cookes 360 services:

Technical Advice & Specification

- ✓ Net design
- ✓ Consultancy
- ✓ Research & Development

Sourcing & Transportation

- ✓ Sourcing quality products
- ✓ Supplier QA inspection
- ✓ Stock spares & storage management

Assembly & Installation

- ✓ Net assembly
- ✓ Net Installation
- ✓ Local adjustments to nets

In-service Inspection, Testing & Certification

- ✓ Mesh testing on/off site
- ✓ Anchoring system testing
- ✓ Certification

Maintenance & Repair

- ✓ Net repair
- ✓ Mooring system repair
- ✓ Fibre rope splicing

Storage

- ✓ Lofting of lifting equipment
- ✓ Storage of customer product
- ✓ Insurance wire rope stock

Asset Management & Compliance

- ✓ BriCert
- ✓ Asset compliance
- ✓ Guidance on discard



reCookes

- ✓ Net recycling
- ✓ Four locations across New Zealand
- ✓ Circular economy

BBtec

The Bridon-Bekaert Technology Centre (BBtec) is our centre of excellence for rope technology development, testing, analysis and verification.

BBtec is equipped with unique equipment capable of testing steel/synthetic ropes and wires. It has extensive forensic analysis laboratory facilities and specialists capable of conducting detailed forensic evaluations of new or retired ropes.

BBtec accelerates Bridon-Bekaert's new product development, involving the latest rope technologies to increase safety, performance and operational life of ropes working in demanding and hostile environments typical to our core markets in the Oil and Gas, Mining, and Construction sectors.

AQUACULTURE SERVICES

Cookes is proud to offer an extensive range of services, including consultancy, mooring, net maintenance & cleaning to the aquaculture industry.

WHERE WE ADD VALUE

Through our extensive experience in supplying quality products to the aquaculture industry, we now offer consultancy services. Our goal is to provide a total solution to the industry, with a global reach stretching through Norway, Australia, South America and Europe, based on practical experience in fish, mussel, oyster and seaweed farming supply and service.

Locally in New Zealand, we have Aquaculture Service Centre's that provide a full net loft service as well as Best Aquaculture Practice (BAP) and Aquaculture Stewardship Certification (ASC) disinfection services for nets and equipment.

We have a range of consultancy partners throughout the world who have vast experience in some of the most challenging aquaculture environments.

- ✓ Consultancy services both locally and globally.
- ✓ Infrastructure analysis for all types of fish farms, barges and moorings (screw anchors and solid hold).
- ✓ Farm management.
- ✓ New product development.
- ✓ Aquaculture Service Centre's offer net cleaning, net making, net repair and storage.
- ✓ Technical analysis of fish farming nets and dimensions.
- ✓ Cookes Certification Monitoring system for all nets and equipment.
- ✓ Supplier of all aquaculture netting and rope requirements.
- ✓ Sea farm installation and implementation.
- ✓ Fish farm harvesting techniques.
- ✓ Fish processing experience.
- ✓ Mussel farm development.
- ✓ Seaweed exploration and development.

STRUCTURAL SIM

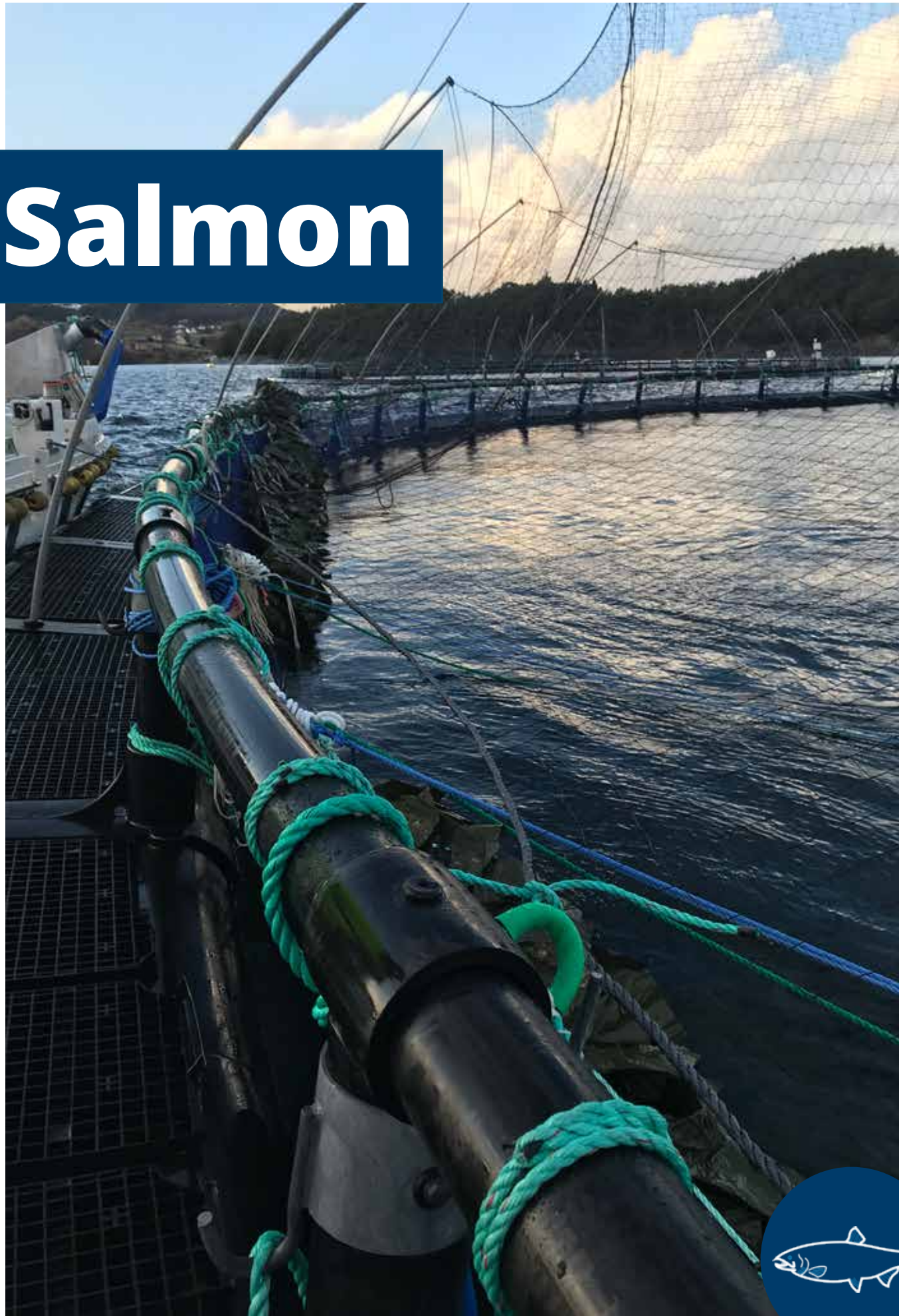
A mooring and structural analysis simulation tool that is designed to provide aquaculture farmers with the ability to make cost-effective and structurally safe decisions when exploring mooring options.

The information obtained from this analysis offers essential information that operators and government agencies rely on for both securing and issuing licences to farms.

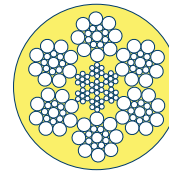
What does it do?

- ✓ Finite element analysis
- ✓ Hydrodynamic (diffraction)
- ✓ Morison load formation for waves and current
- ✓ Wind loads
- ✓ Fluid structure interaction (hydroelasticity)

Salmon



Anchor Line



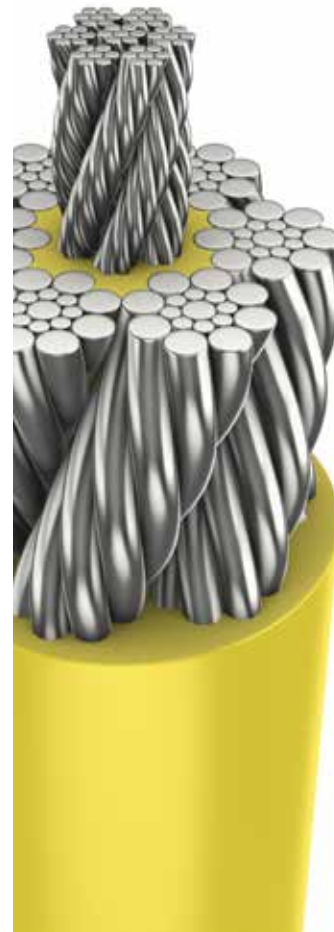
Salmonplast

High Performance Anchor Line

Salmonplast is produced by totally encapsulating a completed rope with a synthetic material. The material is injected internally and applied externally to completely seal the rope and ensure there are no air spaces inside.

The smooth surface prevents permanent fouling fixation, allowing it to come off by its own weight.

- ✓ Galvanised
- ✓ High-pressure internal lubrication
- ✓ Anti - permanent fouling design
- ✓ UV resistant
- ✓ High flexibility and friction resistant



Rope Diameter		Construction	Nominal length mass	
inch	mm		m.Ton	kg/m
3/4	19.0	6x17	29.10	1.45
7/8	21.0	6x17	39.65	2.00
1	24.0	6x17	46.20	2.35
1.1/8	29.0	6x17	61.70	3.35
1.14	32.0	6x17	68.15	3.95

Did you know?



TECHNICAL ADVICE & SPECIFICATION

We are New Zealand's largest & most experienced wire rope supplier and pride ourselves on our ability to provide expert knowledge & technical advice to our customers.

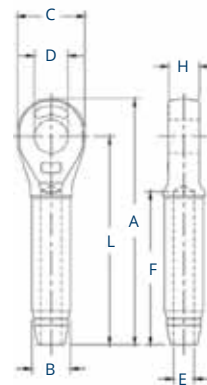
- ✓ Advice & technology to increase the useful life of your ropes.
- ✓ Access to BBtec - The worlds leading wire rope development & technology centre.
- ✓ Assurance your equipment is compliant and meets your needs.

Anchor line

Anchor Line Fittings

Salmonplast features 2x closed swage Crosby Sockets S - 502 at both ends, providing 100% tensile efficiency and 100% hermetic sealing.

mm	Wt. Each (kg)	Ultimate load	A	B	C	D	E	F	H	L
18-20	2.27	43.5	261	39.4	73.0	36.6	20.3	162	33.3	219
22	3.08	51.5	303	43.2	79.0	42.9	23.9	189	38.1	257
24-26	4.72	71.4	344	50.5	92.0	52.5	26.9	216	44.5	292
28	6.72	83.3	382	57.0	102	58.5	30.2	243	51.0	324
32	9.78	109	430	64.5	114	65.0	33.8	270	57.0	365



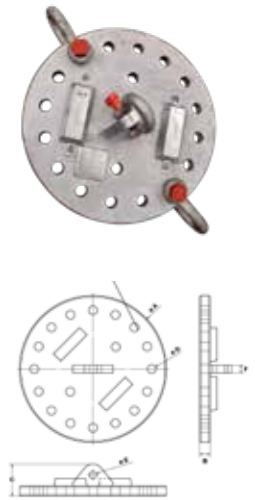
Mooring hardware

TXCP Connection Plate



The TXCP uses the latest robotic welding machines to give an outstanding finish.

"MBL (t)"	Weight (kg)	Dimensions (mm)					
		A	B	C	D	E	F
50	52	450	40	148	36	36	40
100	74	550	40	148	39	36	40
150	165	730	50	158	43	36	40



- ✓ Fitted with zinc anodes as standard to reduce corrosion.
- ✓ Mounting holes make installation and inspection easier.
- ✓ Available in three sizes as standard to give the installer as much flexibility as possible during design and installation.
- ✓ High quality steel gives excellent metallurgical properties.
- ✓ The TXCP is fully galvanized for corrosion resistance.
- ✓ Certified to NS9415.

Did you know?

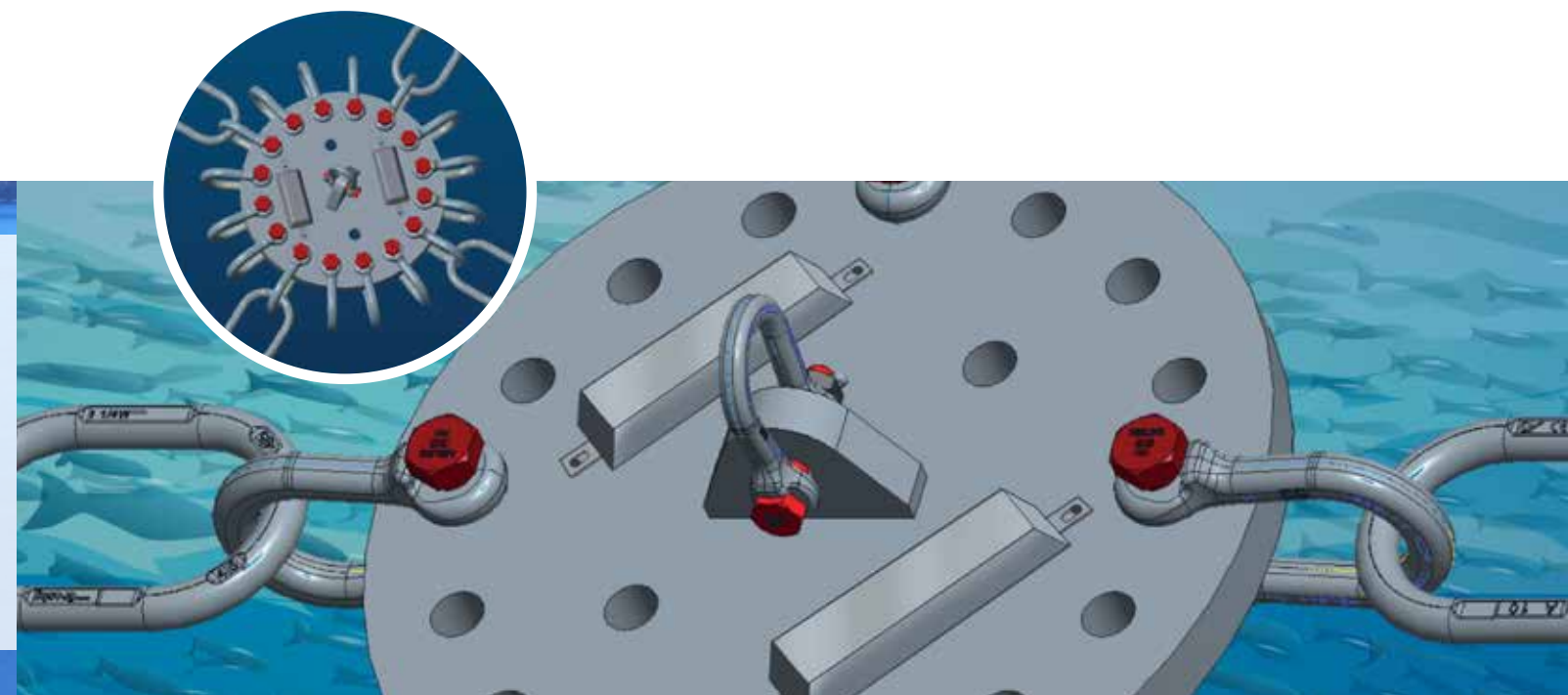


ASSET MANAGEMENT

Our cloud-based asset management system, BriCert, provides the ideal system to manage and certify your assets.

BriCert will allow you to:

- ✓ Manage the locations of all your assets across multiple sites.
- ✓ Ensure your assets are always inspected and certified.
- ✓ Have an up-to-date service history of your assets.



Mooring hardware

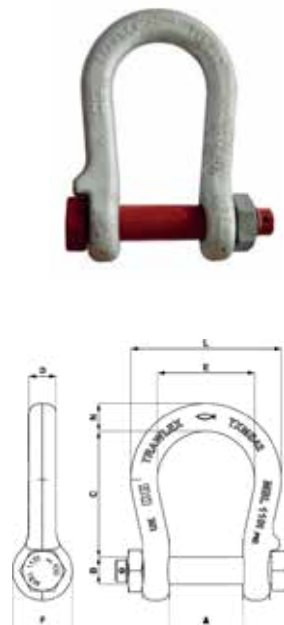
TXMS Mooring Shackle



The new TXMS Mooring Shackle takes existing Crosby® shackle technology and brings it into the aquaculture industry with unique features.

Nominal Size (mm)	MBL (t)	Weight (kg)	Dimensions (mm)							
			A	B	C	D	E	F	L	N
19	30	0.98	44.5	22.73	95	20	60	50	96	20
22	40	1.5	52.5	25	120	22	70	54	114	24
28	60	3.11	61	29.18	145	28.5	90	68	147	31.75
32	90	4.5	81	35.66	165	33	100	76	164	35.25
42	110	8.98	111	42.11	195	43	150	92	232	43
45	150	12.9	125	51.79	250	45	175	105	265	47

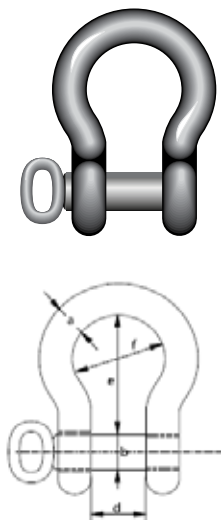
- ✓ A raised fin across all sizes prevents the nut from rotating during solo installation
- ✓ High strength steel gives the body and pin equal superior strength
- ✓ Body and pin are heat-treated and fully galvanized



Mooring Shackles

Van Beest Bow Shackle with screw pin. Designed explicitly for mooring applications.

Nominal Size (mm)	dimensions (mm)						weight kg
	(a)	b	c	d	e	f	
32	32	32	74	64	134	96	4.2
38	38	38	89	76	160	114	7.8
45	45	45	104	90	189	135	12.5
50	50	50	111	100	210	155	17.4
65	65	65	145	130	273	195	35.6



Mooring hardware

TXBS Bow Shackle



Using the Crosby® Bow Shackle body as a base, the TXBS takes this to new levels. Double locking protection as standard to fully comply with NS9415. High quality steel on the body and pin gives excellent metallurgical properties.

Nominal Size (mm)	WLL (t)	MBL (t)	Weight (kg)	Dimensions (mm)							
				A	B	C	D	E	F	L	N
13	2	10	0.25	21.8	16	47.6	12.7	33.2	29.9	59	12.7
16	3.25	16.25	0.5	27.7	19	60.3	15.7	43	38.1	74	17.5
19	4.75	23.75	0.8	33.2	22.7	71.2	19.0	50.8	45.9	88.9	20.5
22	6.5	32.5	1.25	37.8	25	83.5	22.3	58	53.3	103	24.6
25	8.5	42.5	2.1	44.4	29.1	95.0	25.4	68	60.4	119	27

- ✓ Body and pin are fully galvanized
- ✓ Closed-die forged – quenched and tempered, with alloy pin
- ✓ High-visibility double-locking makes inspection sub-sea easy
- ✓ Countersunk pin reduces the risk of snagging on nets
- ✓ Both body and pin have Crosby® PIC Product Identification Codes

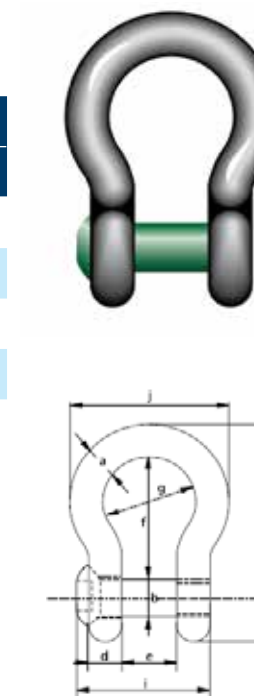


Green Pin Fishing Bow Shackle FP

Bow shackle with square sunken hole screw pin (flush pin).

Nominal size (mm)	WLL (t)	Dimensions (mm)											Weight kg
		a	b	c	d	e	f	g	h	i	j	k	
16	2	13.5	16	34	13	22	51	32	89	51	58	11	0.31
19	3.25	16	19	40	16	27	64	43	110	63	75	11	0.56
22	4.75	19	22	46	19	31	76	51	129	74	89	11	0.98
25	6.5	22	25	52	22	36	83	58	144	85	102	13	1.46
28	8.5	25	28	59	25	43	95	68	164	99	118	13	2.18

- ✓ Bow and pin high tensile steel, Grade 6, quenched and tempered
- ✓ 6:1 design factor
- ✓ Hot dip galvanised
- ✓ Temp range 20°C to +200°C



Mooring hardware

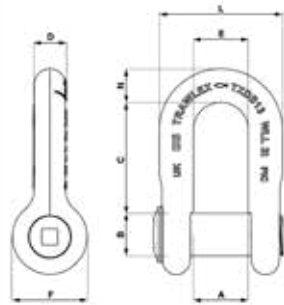
TXBS D Shackle



Using the Crosby® D Shackle body as a base, the TXDS takes this to new levels. Like the TXBS, double locking protection is standard to fully comply with NS9415. High quality steel on the body and pin gives excellent metallurgical properties.

Size (mm)	WLL (t)	MBL (t)	Weight (kg)	Dimensions (mm)									
				A	B	C	D	E	F	L	N	N	
13	2	10	3/8	0.23	20.5	16	41.3	12.7	20.5	29.9	45.9	12.7	
16	3.25	16.25	3/8	0.45	26.9	19	50.9	16	26.9	38.1	58.9	16	
19	4.75	23.75	3/8	0.79	31.7	22.7	60.1	19.0	31.7	45.9	69.8	20.5	
22	6.5	32.5	1/2	1.3	37	25	71.8	22.3	37	53.3	81	25	
25	8.5	42.5	1/2	1.8	43	22	80.6	25	43	60.4	93.8	25.4	

- ✓ Body and pin are fully galvanised.
- ✓ Closed-die forged – quenched and tempered, with alloy pin.
- ✓ High-visibility double-locking makes inspection sub-sea easy.
- ✓ Countersunk pin reduces the risk of snagging on nets.
- ✓ Both body and pin have Crosby® PIC Product Identification Codes.

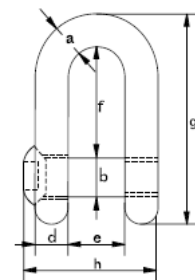


Green Pin Fishing Dee Shackle FP

Dee shackle with square sunken hole screw pin (flush pin).

Nominal Size (mm)	WLL (t)	Dimensions (mm)										Weight (kg)
		a	b	c	d	e	f	g	h	i		
16	2	13.5	16	34	13	22	43	81	51	11	0.34	
19	3.25	16	19	40	16	27	51	97	63	11	0.6	
22	4.75	19	22	46	19	31	59	112	74	11	0.98	
25	6.5	22	25	52	22	36	73	134	85	13	1.26	
28	8.5	25	28	59	25	43	85	154	99	13	2.14	

- ✓ Bow and pin high tensile steel, Grade 6, quenched and tempered
- ✓ 6:1 design factor
- ✓ Hot dip galvanised
- ✓ Temp range 20°C up to +200°C



Mooring hardware

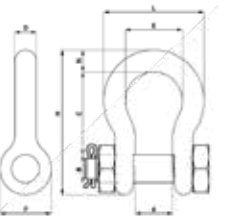
G2130 OC Bolt-type Shackle



Bolt-type anchor shackles with bolt & nut with cotter pin.

Size (in)	WLL (t)	MBL (t)	Weight (kg)	Dimensions (mm)									
				A	B	C	D	E	F	H	L	N	
5/8	3-1/4	19.5	0.62	26.9	19.1	60.5	16.0	42.9	38.1	106	74.5	17.5	
3/4	4-3/4	28.5	1.23	31.8	22.4	71.5	19.1	51.0	46.0	126	89.0	20.6	
7/8	6-1/2	39	1.79	36.6	25.4	84.0	22.4	58.0	53.0	148	102	24.6	
1	8-1/2	51	2.28	42.9	28.7	95.5	25.4	68.5	60.5	167	119	26.9	
1-1/8	9-1/2	57	3.75	46.0	31.8	108	28.7	74.0	68.5	190	131	31.8	
1-1/4	12	72	5.31	51.5	35.1	119	31.8	82.5	76.0	210	146	35.1	
1-3/8	13-1/2	81	7.18	57.0	38.1	133	35.1	92.0	84.0	233	162	38.1	
1-1/2	17	102	8.62	60.5	41.4	146	38.1	98.5	92.0	254	175	41.1	
1-3/4	25	150	15.4	73.0	51.0	178	44.5	127	106	313	225	57.0	

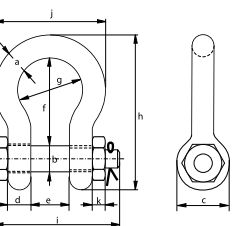
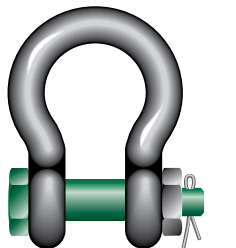
- ✓ Working Load Limit and Grade '6' permanently shown on every shackle
- ✓ Closed-die forged – quenched and tempered, with alloy pins
- ✓ Hot dip galvanised
- ✓ Both body and bolt have Crosby® Product Identification Codes (PIC)
- ✓ Certified to NS9415



Green Pin® Standard Bow Shackles – Safety Bolt

Nominal Size (mm)	WLL (t)	Dimensions											Weight (kg)
		a	b	c	d	e	f	g	h	i	j	k	
19	3.25	16	19	40	16	27	64	43	110	98	75	17	0.74
22	4.75	19	22	46	19	31	76	51	129	114	89	19	1.18
25	6.50	22	25	52	22	36	83	58	144	130	102	22	1.77
28	8.50	25	28	59	25	43	95	68	164	150	118	25	2.58
32	9.50	28	32	66	28	47	108	75	185	166	131	27	3.66
35	12.00	32	35	72	32	51	115	83	201	178	147	30	4.91
38	13.50	35	38	80	35	57	133	92	227	197	162	33	6.54
42	17.00	38	42	88	38	60	146	99	249	202	175	19	8.19
50	25.00	45	50	103	45	74	178	126	300	249	216	23	14.22

- ✓ Bow and pin high tensile steel, Grade 6, quenched and tempered.
- ✓ 6:1 design factor
- ✓ Hot dip galvanised
- ✓ Temp range 20°C up to +200°C



Mooring hardware

TXA334 Galvanised Masterlink



Crosby® is well-known for its range of masterlinks and the TXA334 complements this range.

Size		"WLL (t)"	"MBL (t)"	Weight (kg)	Dimensions (mm)		
mm	in				A	B	C
22	7/8	8.5	42.5	1.59	22	90	170
28	1-1/8	13	65	3.22	28	145	275
32	1-1/4	17	85	5.3	32	140	270
36	1-7/16	24	120	6.87	36	155	285

- ✓ Alloy steel – quenched and tempered
- ✓ Engineered flat on side of masterlinks makes installation of thimbles easier
- ✓ Proof tested
- ✓ Welded masterlink – generous internal dimensions
- ✓ Forged markings include Product Identification Code (PIC) for material traceability and size
- ✓ Fully galvanized
- ✓ Certified to NS9415



TLN Connector

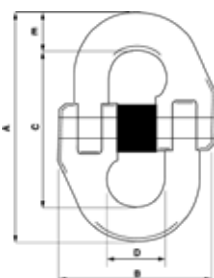


The TL was launched in 1971 and remains THE connector in the trawling industry. It easily found a home in the aquaculture industry.

A two-piece design with pin and bush makes it easy to assemble but very difficult to break. Gold passivation gives the TL its familiar colour and assists with its corrosion protection.

Model	"MBL (t)"	Dimensions (mm)					Weight (kg)
		A	B	C	D	E	
TL7N	7	67	49	48	14.3	9	0.11
TL10N	16.9	89	66	64	19.2	13	0.36
TL13N	25.7	118	85	85	26.5	17	0.66
TL16N	36	144	96	106	32	19	1.08
TL19N	49	168	115	122	38.5	23	1.77
TL23N	73.8	206	140	150	49	28	2.8
TL26N	92	230	163	166	57	32	4.4
TL32N	144	278	210	200	63	39	8.4

- ✓ Two-piece design, closed-die forged
- ✓ Galvanized and gold passivation
- ✓ Fully machined fulcrum points
- ✓ Fully traceable Product Identification Codes (PIC) on forged parts



Mooring Chain

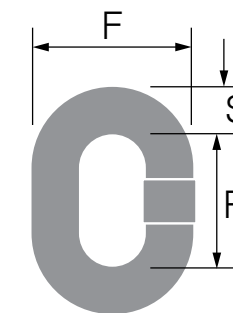
Grade 95 Trawlex® Chain



Crosby Trawlex® trawl chain features improved resistance to stress and corrosion.

Size (mm)	MBL (t)	Dimensions (mm)			Weight (kg/m)
		S	R	F	
16	41.0	16	64	54.5	4.90
19	57.0	19	76	65.0	6.95

- ✓ Manufactured from high strength, wear and shock resistant special steel
- ✓ Self colour finish
- ✓ Manufactured in France



Mooring Chain

Mooring Chains

Proof Coil Chains are not created equal!

PWB Anchor utilises steel from OneSteel's integrated steel mill in Whyalla, South Australia. These blast furnace steels deliver the integrity required in demanding chain applications. With a controlled chemistry and refined grain structure, PWB Anchor can provide the right product to operate at the same critical levels time after time.

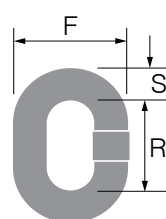
Steel integrity is the hidden element not always considered in a mooring chain purchasing decision, but by choosing PWB Anchor chain you are building in security of product performance, safety and operating life of your chain.

Cookes is proud to offer the highest quality regular link self colour proof coil chain manufactured by PWB Anchor, Australia, in sizes 10mm through 24mm.

Regular Link Proof Chain - Self Colour



Size mm	MWL t	Dimensions (mm)			Weight kg/m
		S	R	F	
10	0.86	9.5	43.4	35.5	1.70
13	1.50	12.0	51.7	44.5	2.80
16	2.31	16.0	59.6	57.3	5.30
20	3.67	20.0	73.3	71.0	8.15
24	5.34	24.0	87.0	84.8	11.60



Manufactured from low-grade carbon steel, this versatile range of chain is proof tested to at least twice the maximum load recommended for normal use.

- ✓ Manufactured in Australia.

Stud Link Mooring Chains

Chain Ø mm	Approximate Breaking Load t	Approximate Weight kg/m
32	35	20
40	55	35
50	90	50



These chains are most commonly used as bottom chains on a swing mooring to provide required weight and strength, particularly in heavy tides.

- ✓ New chain manufactured specifically for mooring or aquaculture applications.
- ✓ No variable dimensions as often found with second-hand stud link chains.
- ✓ Manufactured for Cookes in China.

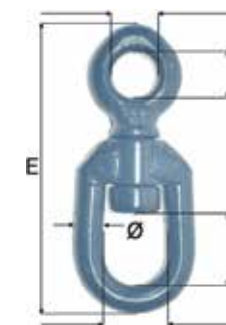
Swivels

Mooring Swivels

Blueline® Forged Eye-Eye Swivels – FOC Model



Size Ømm	MWL t	Dimensions (mm)					Weight kg
		A	B	C	D	E	
16	2.4	30	28	22	22	150	0.87
19	3.8	42	40	28	28	185	1.30
22	5.3	57	48	34	34	230	2.20
25	7.2	63	52	37	37	265	3.65
28	9.0	65	52	37	37	280	4.30



- ✓ Forged alloy steel
- ✓ 5:1 design factor
- ✓ Blue painted finish

Blueline® Forged Eye-Eye Swivels – ST Model



Size Ømm	MWL t	Dimensions (mm)					Weight kg
		A	B	C	D	E	
10	0.6	32	28	25	31	123	0.23
12	1.1	35	30	28	33	140	0.40

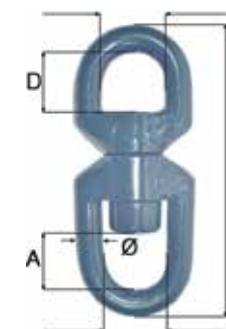


- ✓ Forged alloy steel
- ✓ 5:1 design factor
- ✓ Blue painted finish

Blueline® Forged Eye-Eye Swivels – STC Model



Size Ømm	MWL t	Dimensions (mm)					Weight kg
		A	B	C	D	E	
32	12.5	60	57	55	50	305	7.20
38	15.4	72	60	55	55	340	9.90



- ✓ Forged alloy steel
- ✓ 5:1 design factor
- ✓ Blue painted finish

Fibre rope

SuperDan® Rope

Because SuperDan rope is manufactured from high tenacity polypropylene yarns, SuperDan offers easy handling, high strength, and excellent abrasion resistance.



Colour	Diameter (mm)	Length m	Unit	Weight		Break Load	
				kgs/100m	kg	kg	kN
Black & Yellow	28 mm	220	Coil	39.4	14,500	142.2	
Black & Yellow	32 mm	220	Coil	51.1	18,500	181.5	
Black & Yellow	36 mm	220	Coil	64.1	23,000	225.6	
Black & Yellow	40 mm	220	Coil	79.1	28,400	278.6	
Black & Yellow	48 mm	220	Coil	114.5	39,800	390.4	
Black & Yellow	56 mm	220	Coil	156.0	52,800	518.0	
Black & Yellow	64 mm	220	Coil	203.6	68,200	669.0	
Black & Yellow	72 mm	220	Coil	258.0	85,800	841.7	
Black & Yellow	80 mm	220	Coil	319.0	105,600	1,035.9	

- ✓ Advanced durability
- ✓ Super strength
- ✓ Variety of applications

Danline

Colour	Description	Length m	Unit	Weight		Break Load	
				kgs/100m	kg	kg	kN
White/Black/Yellow/Green	6 mm Danline	220	Coil	1.7	600		
White/Black/Yellow/Green	7 mm Danline	220	Coil	2.3	820		
White/Black/Yellow/Green	8 mm Danline	220	Coil	3.0	1,100		
White/Black/Yellow/Green	10 mm Danline	220	Coil	4.5	1,600		
White/Black/Yellow/Green	12 mm Danline	220	Coil	6.5	2,200		
White/Black/Yellow/Green	14 mm Danline	220	Coil	9.0	3,000		
White/Black/Yellow/Green	16 mm Danline	220	Coil	11.5	3,800		
White/Black/Green	20 mm Danline	220	Coil	18.0	5,800		
White/Black/Green	24 mm Danline	220	Coil	26.0	8,100		
White/Black/Green	32 mm Danline	220	Coil	46.0	13,500		



Fibre rope

SuperTec 8 Strand Rope

Description	Length m	Unit	Weight		Break Load	
			kgs/100m	kg	kg	kN
24 mm SuperTec	220	Coil	28.8	13,400	131.4	
28 mm SuperTec	220	Coil	39.4	17,800	174.6	
36 mm SuperTec	220	Coil	64.1	28,300	277.6	
40 mm SuperTec	220	Coil	79.1	34,900	342.4	
48 mm SuperTec	220	Coil	114.5	48,900	479.7	
56 mm SuperTec	220	Coil	156.0	64,900	636.6	
64 mm SuperTec	220	Coil	203.6	83,900	823.0	
72 mm SuperTec	220	Coil	258.0	105,500	1,034.9	
80 mm SuperTec	220	Coil	319.0	129,900	1,274.3	



DSR's innovative technology has enabled us to offer a stronger, and more affordable rope. Size for size, SuperTec is stronger than PP, PE, and polyolefin ropes. In addition to its strength, SuperTec provides higher abrasion and fatigue-resistant properties.

SuperTec rope is easier to handle than other ropes of its class, as it does not absorb water.

Available in three, eight and twelve strand.

Available in green only. Other sizes available on indent.

SuperTec 3 Strand Rope

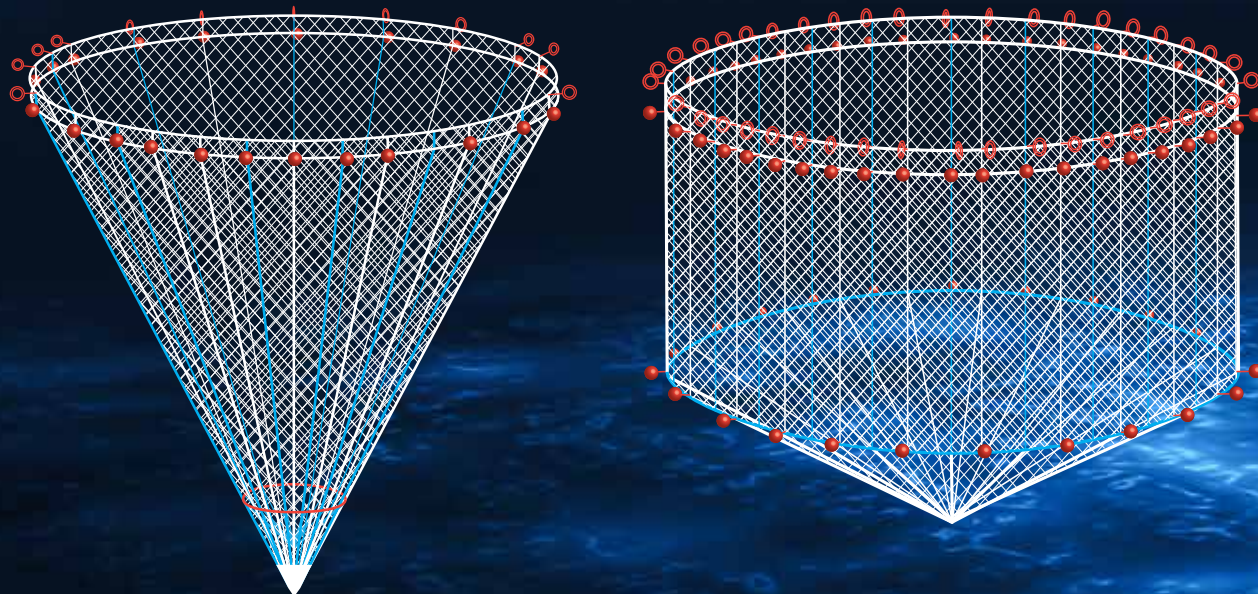
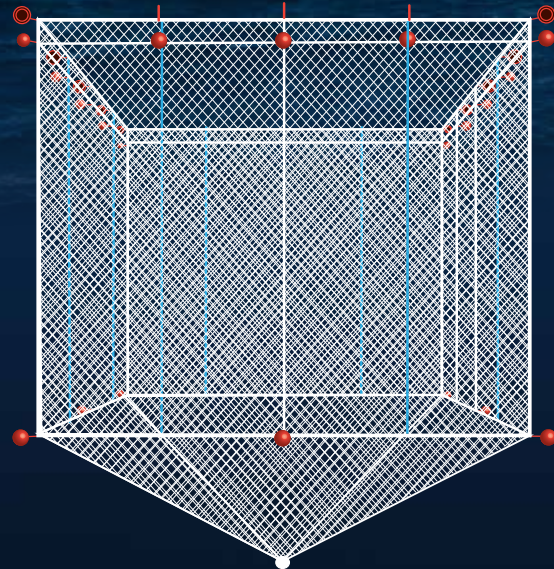
Description	Length m	Unit	Weight		Break Load	
			kgs/100m	kg	kg	kN
12 mm SuperTec	220	Coil	6.6	3,200	31.4	
16 mm SuperTec	220	Coil	11.6	5,400	53.0	
20 mm SuperTec	220	Coil	17.9	8,200	80.4	
24 mm SuperTec	220	Coil	26.0	11,800	115.8	
28 mm SuperTec	220	Coil	35.5	15,600	153.0	
32 mm SuperTec	220	Coil	46.0	19,600	192.3	
36 mm SuperTec	220	Coil	58.0	24,200	237.4	
40 mm SuperTec	220	Coil	71.5	29,600	290.4	
48 mm SuperTec	220	Coil	69.9	42,500	416.9	
56 mm SuperTec	220	Coil	142.0	55,400	543.5	
64 mm SuperTec	220	Coil	185.0	71,200	698.5	



Net designs

Cookes offer high-performance netting solutions, designed and tailored to meet the unique needs of salmon farmers. Through our award-winning partner Garware Technical Fibres, we design, develop, manufacture, and deliver world-class netting for grow-out/nursery and predator cages.

Garware Technical Fibres puts the customer at the heart of their research and development, ensuring technology developments that deliver unparalleled quality and value.

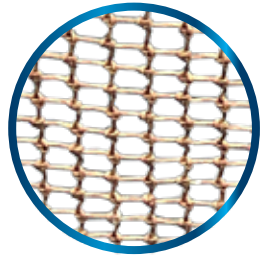


Net technology

V2 TECHNOLOGY

An industry leading solution from our partner Garware Technical Fibres. V2 Net Technology reduces operation costs through a reduction in cleaning costs and ensures a higher growth rate due to reduced fouling.

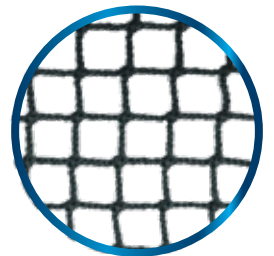
- ✓ Significantly reduced cleaning costs.
- ✓ Higher growth rate (due to reduced fouling).
- ✓ Environmentally friendly.
- ✓ Cleaner fish efficiency.



STAR NETTING

A general purpose netting designed for grow out and smolt cages. Star netting features, high-strength properties with no loss of strength in water and reduced algae formation.

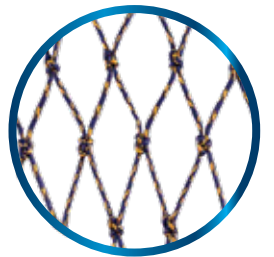
- ✓ Manufactured with special polyolefin fibres.
- ✓ No loss of strength in water.
- ✓ Reduced algae formation.
- ✓ No anti-fouling coating required.



SAPHIRE ULTRA CORE MBX

Sapphire Ultra Core, developed by the R&D leg of Garware Technical Fibres, is a single cage solution. The unique design eliminates the need for any other grow-out cage within.

- ✓ High cut resistance.
- ✓ High stiffness.
- ✓ Prevents mud ingress.
- ✓ SS wire resists bite through.



Mussel



Fibre rope

Mussel Lashing Twine

Description	Length	Unit	Weight	Break Load
	m		kgs/each	kg
Mussel Lashing Twine Black	1,100	Each	9.25	—

Note: Weight is by length not per 100m

Mussel Lashing Rope - 3 Strand

Diameter (mm)	Length	Unit	Weight	Break Load
	m		kgs/each	kg
6	1,000	Each	17.24	600
7	850	Each	19.96	820
9	850	Each	32.30	1,300

- ✓ Soft lay construction
- ✓ UV resistant
- ✓ Easy to handle

Note: Weight is by length not per 100m

SuperDan® Rope - 3 Strand

Colour	Diameter (mm)	Length	Unit	Weight	Break Load	
		m		kgs/100m	kg	kN
Black	40 mm	220	Coil	79.1	28,400	278.6



Fibre rope

SuperTec - Backbone Black - 3 Strand

Colour	Diameter (mm)	Length	Unit	Weight	Break Load
		m		kgs/100m	kg
Black	24	220	Each	26.0	11,800
Black	28	220	Each	35.5	15,600
Black	30	220	Each	41.1	16,500
Black	32	220	Each	46.0	19,600
Black	32	660	Each	46.0	19,600

SuperTec - Backbone Black - 4 Strand

Colour	Diameter (mm)	Length	Unit	Weight	Break Load
		m		kgs/100m	kg
Black	32	220	Each	46.0	19,600

- ✓ Advanced durability
- ✓ Super strength
- ✓ Variety of applications



4 S/T Mussel Backbone is engineered to be more abrasion resistance than 3 S/T ropes. Compared to 3 S/T backbone 4 S/T backbone features a more stable structure owing to the wider contacting area of each strand.

4 S/T produces a rounder and more compact construction meaning less diameter loss under MBL.

4 S/T has a softer appearance and feel compared to that of 3 S/T at the same lay condition.

- ✓ Elongation at MBL is remain the same.
- ✓ Internal core within each strand assists stability of 4/ST Rope
- ✓ Splicing remains similar to 3/ST

Clearwater Mussels

The situation

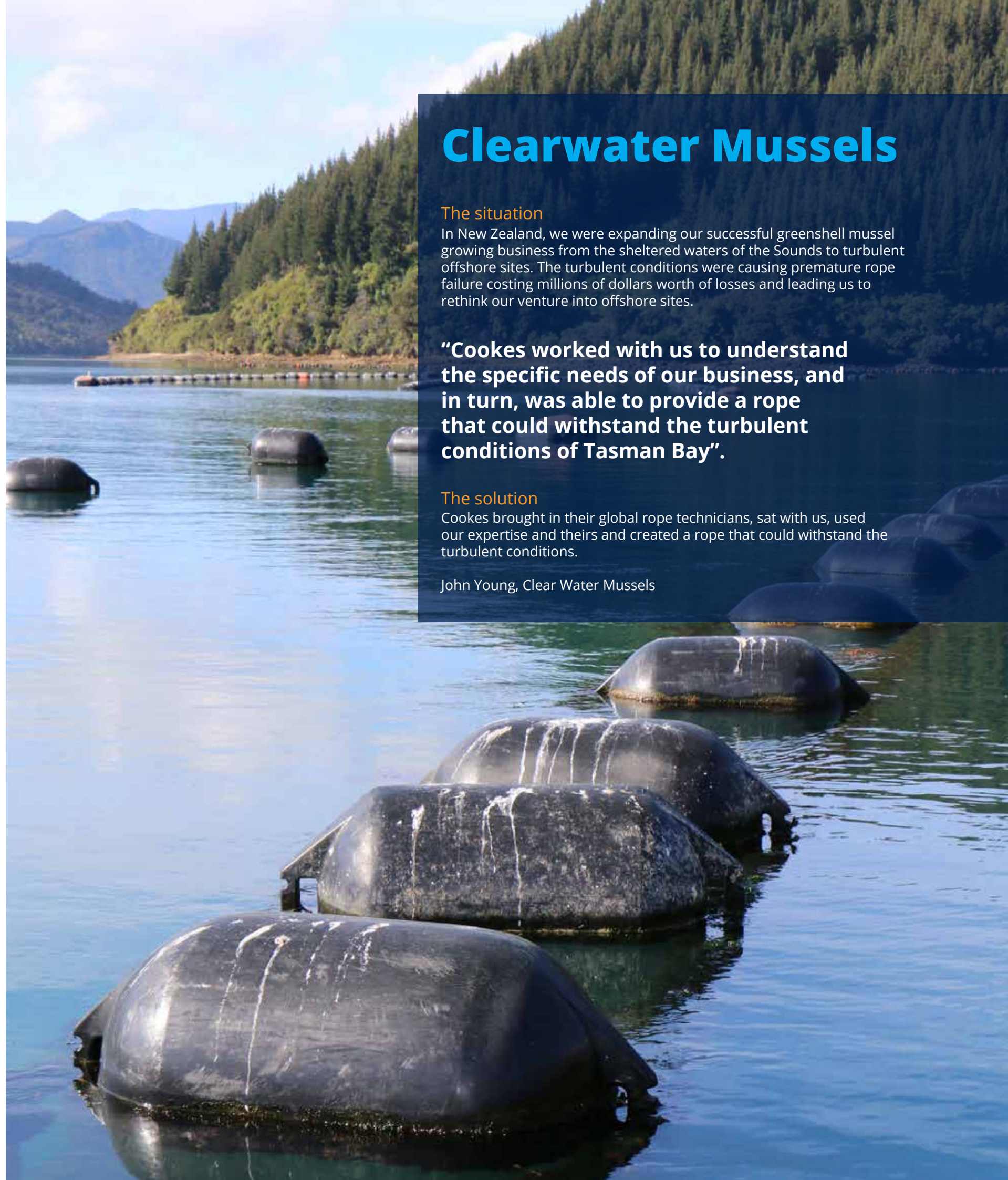
In New Zealand, we were expanding our successful greenshell mussel growing business from the sheltered waters of the Sounds to turbulent offshore sites. The turbulent conditions were causing premature rope failure costing millions of dollars worth of losses and leading us to rethink our venture into offshore sites.

“Cokes worked with us to understand the specific needs of our business, and in turn, was able to provide a rope that could withstand the turbulent conditions of Tasman Bay”.

The solution

Cokes brought in their global rope technicians, sat with us, used our expertise and theirs and created a rope that could withstand the turbulent conditions.

John Young, Clear Water Mussels



Accessories

Clothing & equipment

Safemate Foot Wear

Available in sizes from 7-14. Featuring steel toe caps and oil/acid and slip resistant soles.



Stormline Double Front Bib

Ranging in sizes S - 4XL and featuring:

- ✓ Heavy-duty polyester backed PVC outer layer and nylon backed PVC against skin for quick drying.
- ✓ Triple layer in the knee incorporating removable knee pads and elasticated braces with industrial plastic clip buckles.
- ✓ Reinforced with tape at stress points and velcro tape at legs for adjustment & safety.
- ✓ Elastic waist, hi-visibility neon for safety. Ideal for environments requiring abrasion resistant gear.



Stormline Crew Jackets

Ranges in sizes from S - 3XL and features;

- ✓ Velcro storm flap, drawstring storm hood, and neoprene adjustable cuffs for water protection and comfort.
- ✓ Shorter front to reduce bulk with longer back for added water protection.
- ✓ Featured in mostly neon for hi-visibility, the jacket also features white reflective tape for superior reflective performance in all conditions and enhanced safety and identification.
- ✓ Ideal for environments requiring abrasion-resistant gear.



Gloves

Our gloves come in a range of models and sizes to suit your requirements.



Model	Type	Size	Colour
Nylon Gloves	Nylon	SM - XL	White / Red Trim
Cotton	Cotton 342K	LG	White with Yellow Trim
Double Dipped	PVC 45cm	LG	Green
Dyna Grip	DG 40cm	LG	Orange
Slurry	PVC 62CM	LG	Blue
Laytex	MDLL	LG	Clear

Knives

Hot Knives

HSGM 240v Hot Knives available with or without type R blade. Blades also sold individually.

Brand	Model	Blade Type
HSGM Hot Knife	240V	Type R Blade (additional)
HSGM Hot Knife	Blade (only)	Type R Blade



Fish Knives

Godard Victory fish knives available in a variety of models.

Model	Blade Type	Blade Length
		cm
Serrated 341	S/S Serrated	22
Cabbage 308	S/S Straight	30
Fish Splitter - Heavy Duty	S/S Straight	30
Fish 307	S/S Straight	17
Heading Fillet 307	S/S Straight	22
Heading Fillet 802	S/S Straight	22
Thin Fillet 512	S/S Straight	18
Fillet 506	S/S Straight	22
Narrow Fillet 250625	S/S Straight	25



Serrated 341



Heading Fillet 802



Cabbage 308



Thin Fillet 512



Fish Splitter - Heavy Duty



Fillet 506



Heading Fillet 307

Knives

Butchers Knives

Godard Victory stainless steel butchers knives, available in a range of sizes and models.

Model	Blade Type	Blade Length
		cm
Boning Knife 710	Stainless Steel	15
Boning Knife 710	Stainless Steel	17
Boning Knife 223	Stainless Steel	17
Y-Cut Knife 207	Stainless Steel	15
Y-Cut Knife 207	Stainless Steel	17
Fillet Knife 210	Stainless Steel	19



Boning 710



Y-Cut 207



Boning 710



Fillet Knife 210

Kazax Hi-Cut Fish Knives

Kazax Hi-Cut fish knives featuring a straight stainless-steel blade with sheath. Available in two lengths: 15cm and 21cm.



Japanese Knives

Magiri-Deck carbon steel straight knife. 13.5cm in length.



Vegetable Knives

Victorinox stainless steel serrated vegetable knife. 8cm in length.



Splicing tools

Splicing Fids

Model	Material		Length (mm)
	Handle	Spike	
EM 170	Wood	Stainless Steel	170
MDR 220	Wood	Stainless Steel	220
MDR 290	Wood	Stainless Steel	290
MDR 360	Wood	Stainless Steel	360



Marlin Spikes

Model	Material		Dimensions (mm)		Weight kg
	Tip	Spike	H	Dia.	
EM 260	Hardened	Chrome Steel	260	28	0.24
EM 310	Hardened	Chrome Steel	310	28	0.37
EM 450	Hardened	Chrome Steel	450	43	1.21
EM 610	Hardened	Chrome Steel	610	43	1.88



Sundry Codend Ring

Trawling Codend Rings available in black and white.

Colour	Lifting Limit kg	Diameter (mm)	
		Inside	Outside
White	400	38	55
White	800	44	69
Black	800	44	69
White	1,100	60	89



Net needles

Osprey Needles

Size		Part #
in	mm	
10	250	NAL10
12	300	NAL12
14	350	NAL14
16	400	NAL16



Toka Needles

Size		Part #
in	mm	
8	203	MAAL451
10	250	MAAL452
12	300	MAAL453



Blueline Needles

Size		Part #
in	mm	
5	127	NAL F1040
7	178	NAL F1041
8	203	NAL-F987



Netloft

A large fishing net is being hoisted by a red crane at an outdoor facility. The net is suspended vertically, showing its intricate mesh structure. The crane is positioned on the left side of the frame, and the background features a clear blue sky and some industrial equipment.

Fishing & Aquaculture

We are the leading supplier of aquaculture nets to the New Zealand salmon farming industry. We supply grower nets, predator nets, and bird nets that are engineered and manufactured to the specific requirements of each customer and farm.

Cookes provides net design services, manufacture (nets only), alteration, splicing and repair services for all types of netting and rope products from our three specialised Netloft Service Centres/netting facilities in Nelson, Timaru, and Picton.

Additional services from these facilities include:

- ✓ Disinfection
- ✓ Wash down
- ✓ Repair
- ✓ Net strength testing
- ✓ Net recycling

Cookes proudly partnerwith one of the worlds leading net manufacturers for the aquaculture industry, Garware Technical Fibres. This partnership allows Cookes to access world-leading net technology and innovation that can provide increased value, productivity, and safety.

We also work closely with the New Zealand fishing industry to develop and assess new net technologies that ensure our customers have access to leading solutions that generate the best catch rates and reduce environmental impact.

We provide:

- ✓ Grow nets
- ✓ Smolt nets
- ✓ Harvest nets
- ✓ Predator nets
- ✓ Bird nets

Rope splicing

We specialise in splicing of all types of ropes and the manufacture of Dyneema® Heli lines. Both Dyneema® Fibre and Dyneema® rope slings are fully certified and ready for service. We also offer a full measure, installation, and regular inspection and certification service to ensure customer-specific needs are met.

Cookes has three netlofts across the south island:

- ✓ Picton
- ✓ Nelson
- ✓ Timaru



LOCAL EXPERTISE

Our locations.

AUCKLAND HEAD OFFICE

6 - 10 Greenmount Drive
East Tamaki
Auckland 2013
contact@cookes.co.nz
Phone: +64 9 274 4299

WHANGAREI

239 Lower Port Road
Whangarei 0174
whgsales@cookes.co.nz
Phone: +64 9 438 8964

HAMILTON

17 Tasman Road
Avalon
Phone: 0508 274 366

ROTORUA / NAPIER

59 Marguerita Street
Rotorua 3010
rotsales@cookes.co.nz
Phone: +64 7 348 3042

TAURANGA

1 Marsh Street
Tauranga 3110
tausales@cookes.co.nz
Phone: +64 7 578 0605

NEW PLYMOUTH

72 Corbett Road
Bell Block, RD3
New Plymouth 4312
npysales@cookes.co.nz
Phone: +64 6 755 0413

WELLINGTON / PALMERSTON NORTH

57 Cuba Street
Petone, Wellington 5012
wtmsales@cookes.co.nz
Phone: +64 4 568 4384

NELSON

8 Akersten Street
Port Nelson 7010
nelsales@cookes.co.nz
Phone: +64 3 548 0719

CHRISTCHURCH

124C Waterloo Road
Christchurch 8042
chcsales@cookes.co.nz
Phone: +64 3 349 3002

TIMARU

66 Seadown Road
Timaru 7910
timsales@cookes.co.nz
Phone: +64 3 684 7494

DUNEDIN

2A Orari Street
Dunedin 9012
dunsales@cookes.co.nz
Phone: +64 3 455 3966

INVERCARGILL

137 Clyde Street
Invercargill 9810
invsales@cookes.co.nz
Phone: +64 3 218 4682

COOKES

a **BRIDON · BEKAERT** Ropes Group Brand

contact@cookes.co.nz

www.cookes.co.nz



facebook.com/Cookesbbrg



linkedin.com/company/cookes



twitter.com/bridonbekaert

Head Office

Bridon New Zealand Limited
trading as **Cookes**

6-10 Greenmount Drive, East Tamaki
PO Box 14 422, Panmure

Auckland

0508 274 366

+64 9 274 4299

Disclaimer:

Whilst every effort has been made to ensure the accuracy of information in this publication, no guarantee or warranty (expressed or implied) is given with respect to the accuracy or completeness of the information contained within. This publication and the products described herein may be changed or updated without notice. Any and all liability whatsoever for any loss or damage arising, directly or indirectly, out of or in connection with the use of this publication, is excluded to the fullest extent permitted by law. The user must determine the suitability of the product for their own particular purpose, either alone or in combination with other products and shall assume all risk and liability in connection therewith. This document is published by Bridon New Zealand Ltd. Use of this publication shall be governed in accordance with the laws of New Zealand courts and shall have exclusive jurisdiction over any dispute concerning your use of this publication.

Intellectual Property:

All rights reserved. No parts of this publication may be reproduced or transmitted in any form or by any means without the prior written permission of the copyright holder, application for which should be addressed to Bridon New Zealand Ltd.

Edition 01/2020 Cookes Aquaculture Catalogue

BRIDON · BEKAERT
THE ROPES GROUP