



# BLOCKS, PULLEYS & SWIVELS

<b>Introduction</b> .....	<b>348</b>
<b>C&amp;R Blocks &amp; Sheaves</b> .....	<b>349</b>
High Tensile Rigging Blocks .....	<b>349</b>
Heavy Duty Cargo Blocks .....	<b>350</b>
Non-Snatch Pulley Blocks .....	<b>351</b>
Snatch Pulley Blocks .....	<b>353</b>
Stainless Steel Marine Blocks .....	<b>354</b>
Crane Blocks & Purse Blocks .....	<b>355</b>
Steel Sheaves .....	<b>356</b>
<b>Yoke Blocks</b> .....	<b>358</b>
Snatch Blocks .....	<b>359</b>
<b>McKissick® Blocks</b> .....	<b>360</b>
<b>Other Blocks</b> .....	<b>361</b>
General Purpose Snatch Blocks .....	<b>361</b>
Cargo Lashing Blocks .....	<b>361</b>
4 Wheel Drive Blocks .....	<b>362</b>
Fibre Rope Blocks .....	<b>363</b>
<b>Special Blocks</b> .....	<b>364</b>
<b>Care &amp; Use of Blocks</b> .....	<b>365</b>
<b>Swivels</b> .....	<b>367</b>
Certified Swivels For Lifting Applications .....	<b>367</b>
Insulated Swivels For Lifting Applications .....	<b>368</b>
Certified Swivels For Non-Lifting Applications .....	<b>369</b>

# INTRODUCTION

Cookes shares a unique history with local engineering company C&R Equipment. Formed over 50 years ago in Christchurch, C&R Equipment was for many years a group subsidiary of William Cooke Holdings Ltd. Popular blocks of the time such as the 'Cooke's All Cast Block' are testament to our shared history, and Cookes is proud to continue offering this exceptional range of New Zealand manufactured blocks.

Refer to the standard range of C&R blocks on following pages or contact your nearest Cookes branch for special configurations that can be manufactured to order.



High Tensile Rigging Blocks



Heavy Duty Cargo Blocks



Non-Snatch Pulley Blocks



Snatch Pulley Blocks



Pulley Blocks with Hook



Stainless Steel Blocks



Multi Sheave Purse Blocks



Single Sheave Crane Blocks



Multi Sheave Crane Blocks

10

BLOCKS, PULLEYS & SWIVELS

OUR WORLD LEADING PARTNER...



**COOKES** – helping lift New Zealand business for over 100 years!  
a BRIDON · BEKAERT Ropes Group Brand

# C&R BLOCKS & SHEAVES

## HIGH TENSILE RIGGING BLOCKS

High Tensile Rigging Blocks – with Swivel Shackle



Product Code	WLL (t)*		Proof Load t	Sheave Ømm	Suit Rope Ømm	Dimensions (mm)				Weight kg
	moving	fixed				A	B	C	Ø D	
07155150	10	5	20	150	20	462	195	87	45	20
07155200	12	6	24	200	22	513	248	87	45	26
07155250	15	7.5	30	250	26	562	290	87	45	33
07155300	20	10	40	300	28	674	350	102	53	65

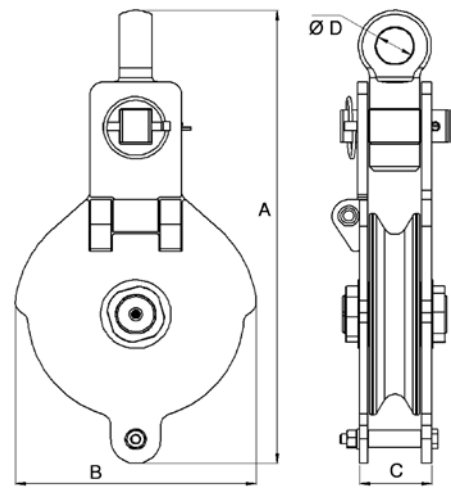
\* For an explanation with diagram covering 'Fixed' and 'Moving' blocks, refer page 365.



07155150, 07155200,  
07155250

07155300

Now fitted with GreenPin Safety Anchor Shackle in crosshead.



Proudly manufactured in New Zealand. Now featuring a 'Green Pin' Safety Shackle on swivel crosshead.

- Manufactured in accordance with AS B298-1871 and BS4018.
- Tested and certified with easy to read WLL plate.
- Quick action single snatch facilitates ease of rope reeving with positive location and locking (sizes 150 – 250mm).
- 300mm block features quick action double snatch to facilitate ease of rope reeving with positive location and locking.
- Fully machined sheave with greaseable bronze bearing hub.
- Wide shoulder sheave profile ensures maximum rope guiding and added sheave protection.
- Stepped axle is fully locked for block rigidity. Becket for third fall of rope.
- D.L.L. Australia (Vict.) approved.
- Powder-coated side plates with zinc plated hardware for maximum corrosion resistance.

Larger sizes or double sheave configurations manufactured to order. Refer your nearest Cookes branch or email [customerservices@bridoncookes.co.nz](mailto:customerservices@bridoncookes.co.nz).



• Never exceed manufacturer's Working Load Limit (WLL).

# C&R BLOCKS & SHEAVES

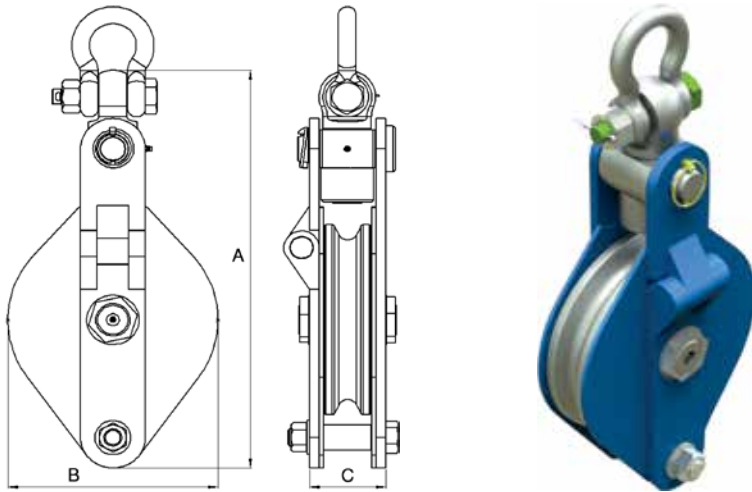
## HEAVY DUTY CARGO BLOCKS

Heavy Duty Cargo Blocks – with Swivel Shackle



Product Code	WLL (t)*		Proof Load t	Sheave Ømm	Suit Rope Ømm	Dimensions (mm)			Weight kg
	moving	fixed				A	B	C	
07145150	2	1	4	150	12	337	160	59	7
07145200	4	2	8	200	16	429	212	79	17
07145250	6	3	12	250	20	524	260	94	39

\* For an explanation with diagram covering 'Fixed' and 'Moving' blocks, refer page 365.



Proudly manufactured in New Zealand.

- Manufactured in accordance with AS B298-1871 and BS4018.
- Tested and certified with easy to read WLL plate.
- Quick action single snatch facilities ease of rope reeving with positive location and locking.
- Swivelling crosshead.
- Fitted with high load 'Green Pin' safety shackle.
- Fully machined sheave with greaseable bronze bearing hub.
- Wide shoulder sheave profile ensures maximum rope guiding and added sheave protection.
- Stepped axle is fully locked for block rigidity. Becket for third fall of rope.
- D.L.L. Australia (Vict.) approved.
- Powder-coated side plates with zinc plated hardware for maximum corrosion resistance.



- Also manufactured to order with Hook head fitting and 2 or 3-sheave configuration.
- Refer your nearest Cookes branch or email [customerservices@bridoncookes.co.nz](mailto:customerservices@bridoncookes.co.nz).



- Never exceed manufacturer's Working Load Limit (WLL).

# C&R BLOCKS & SHEAVES

## NON-SNATCH PULLEY BLOCKS

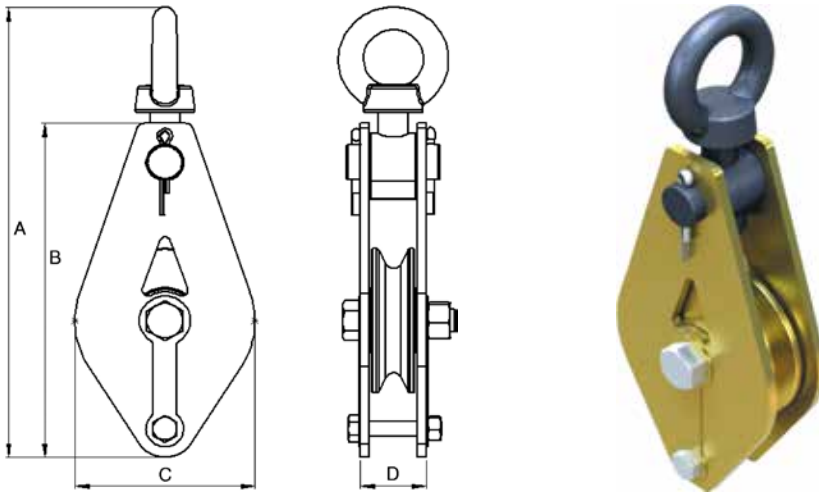
### Non-Snatch Pulley Blocks – with Swivel Eye



Product Code	WLL (t) **		Bearing Type *	Sheave	Suit Rope	Dimensions (mm)				Weight kg
	moving	fixed		Ømm	Ømm	A	B	C	D	
07101050T	0.50	0.25	PB	50	6	150	100	70	28	0.50
07101075	0.40	0.20	PB	75	10	180	140	90	28	1.30
07101100	1.00	0.50	PB	100	10	313	232	120	44	2.00
071011002T	2.00	1.00	PB	100	10	313	232	120	44	2.50
07101150	1.00	0.50	BB	150	12	380	300	168	44	4.00
071011502T	2.00	1.00	BB	150	12	380	300	168	44	4.50

\* PB=Plain Bearing. BB=Ball Bearing.

\*\* For an explanation with diagram covering 'Fixed' and 'Moving' blocks, refer page 365.



Light weight, New Zealand manufactured quality pulley block with swivelling eye & crosshead.

- Available in heavy duty models with increased Working Load Limits in sizes 50mm, 100mm and 150mm.
- 4:1 design factor.
- 50 – 100mm with Nylon Bush.
- 150mm with Ball Bearing.
- Zinc plated for corrosion resistance.



- Also manufactured to order with Hook head fitting and 2 or 3-sheave configuration.
- Refer your nearest Cookes branch or email [customerservices@bridoncookes.co.nz](mailto:customerservices@bridoncookes.co.nz).



- Never exceed manufacturer's Working Load Limit (WLL).

# C&R BLOCKS & SHEAVES

## NON-SNATCH PULLEY BLOCKS

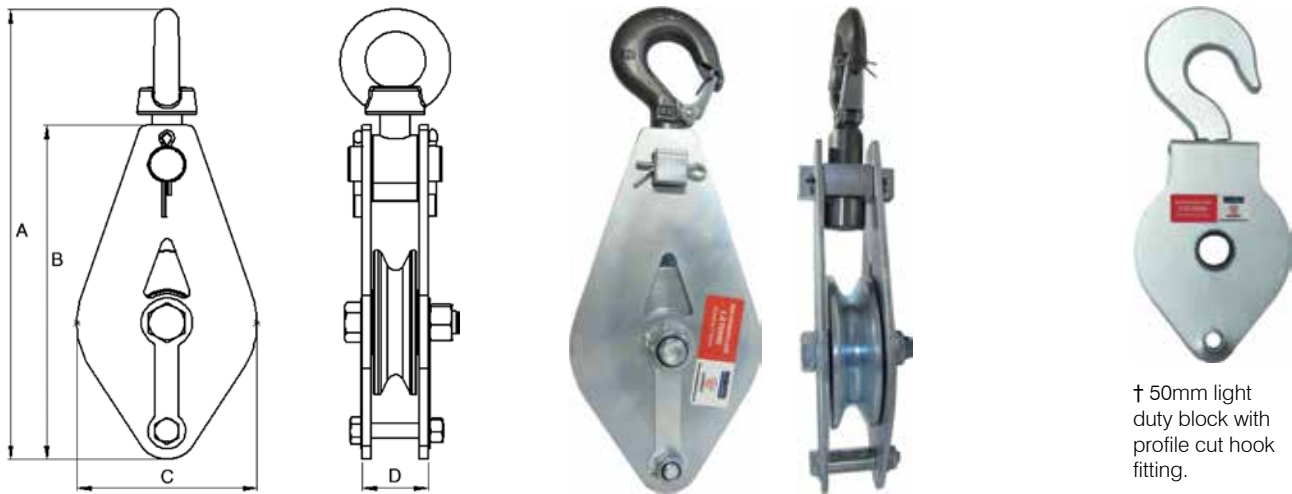
### Non-Snatch Pulley Blocks – with Swivel Hook



Product Code	WLL (t) **		Bearing Type *	Sheave	Suit Rope	Dimensions (mm)				Weight kg
	moving	fixed		Ømm	Ømm	A	B	C	D	
07101050 †	0.25	0.125	PB	50	6	150	100	70	28	0.35
07102100	1.0	0.5	PB	100	10	313	232	120	39	1.75
07102150	1.0	0.5	BB	150	12	380	300	168	39	2.75

\* PB=Plain Bearing. BB=Ball Bearing.

\*\* For an explanation with diagram covering 'Fixed' and 'Moving' blocks, refer page 365.



Dimensions for block with hook head fitting are same as swivel eye type.

† 50mm light duty block with profile cut hook fitting.

Light weight, New Zealand manufactured quality pulley block with swivelling hook.

- 4:1 design factor.
- 50mm and 100mm with Nylon Bush.
- 150mm with Ball Bearing.
- Zinc plated for corrosion resistance.



- Also manufactured to order with Hook head fitting and 2 or 3-sheave configuration.
- Refer your nearest Cookes branch or email [customerservices@bridoncookes.co.nz](mailto:customerservices@bridoncookes.co.nz).



- Never exceed manufacturer's Working Load Limit (WLL).

# C&R BLOCKS & SHEAVES

## SNATCH PULLEY BLOCKS

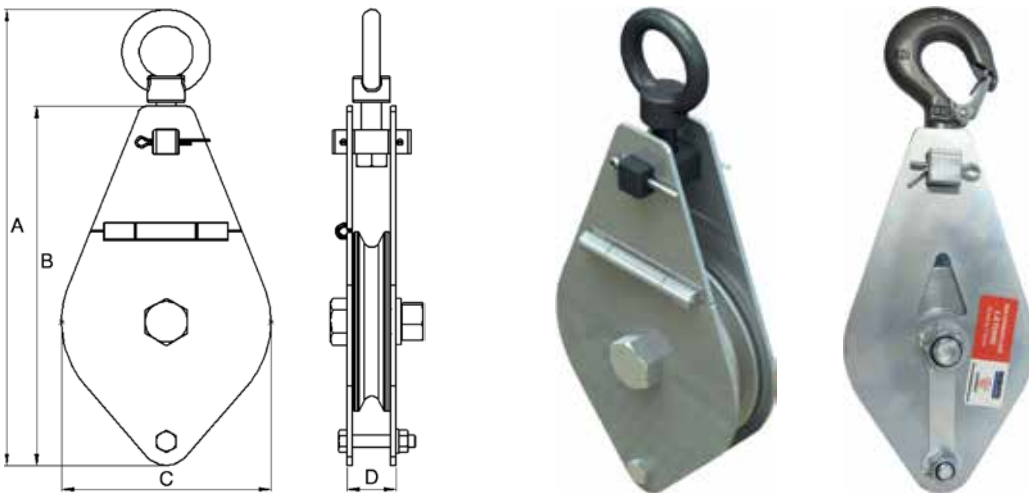
### Snatch Type Pulley Blocks – with Swivel Oval Eye



Product Code	WLL (t) **		Bearing Type *	Sheave	Suit Rope	Dimensions (mm)				Weight kg
	moving	fixed		Ømm	Ømm	A	B	C	D	
07105100	1.0	0.5	PB	100	10	313	232	120	39	1.75
07105150	1.0	0.5	BB	150	12	380	300	168	39	2.75

\* PB=Plain Bearing. BB=Ball Bearing.

\*\* For an explanation with diagram covering 'Fixed' and 'Moving' blocks, refer page 365.



Dimensions for block with hook head fitting are same as swivel eye type.

### Snatch Type Pulley Blocks – with Swivel Hook



Product Code	WLL (t) **		Bearing Type *	Sheave	Suit Rope	Dimensions (mm)				Weight kg
	moving	fixed		Ømm	Ømm	A	B	C	D	
07105100H	1.0	0.5	PB	100	10	313	232	120	39	1.75
07105150H	1.0	0.5	BB	150	12	380	300	168	39	2.75

\* PB=Plain Bearing. BB=Ball Bearing.

\*\* For an explanation with diagram covering 'Fixed' and 'Moving' blocks, refer page 365.

Light weight, New Zealand manufactured quality pulley block with choice of swivel eye or swivel hook head fitting.

- 4:1 design factor.
- Quick action single snatch facilitates ease of rope reeving.
- 100mm with Nylon Bush.
- 150mm with Ball Bearing.
- Zinc plated for corrosion resistance.



- Also manufactured to order and 2 or 3-sheave configuration.
- Refer your nearest Cookes branch or email [customerservices@bridoncookes.co.nz](mailto:customerservices@bridoncookes.co.nz).



- Never exceed manufacturer's Working Load Limit (WLL).



# C&R BLOCKS & SHEAVES

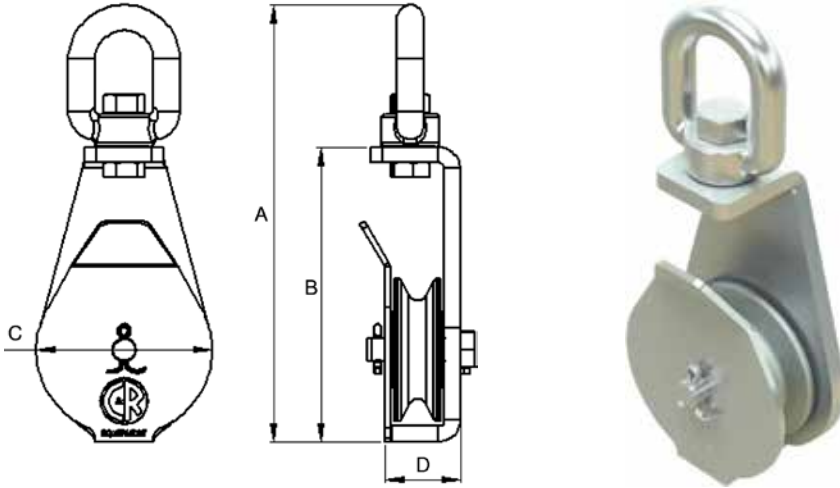
## STAINLESS STEEL MARINE BLOCKS

### Stainless Steel Open Side Pulley Blocks – with Swivel Oval Eye



Product Code	WLL (t)*		Proof Load t	Sheave Ømm	Suit Rope Ømm	Dimensions (mm)				Weight kg
	moving	fixed				A	B	C	D	
07107075	1.5	0.75	3.0	75	10	229.5	154.5	90	38.5	1.85

\* For an explanation with diagram covering 'Fixed' and 'Moving' blocks, refer page 365.



Heavy duty swivel eye marine block.

- 5:1 design factor.
- Full AISI316 stainless steel construction for best protection in marine environments.
- Open side plate allows fast rigging for simple winch lifts.
- Proudly manufactured in New Zealand.

### Stainless Steel Open Side Pulley Blocks – Fixed Eye



Product Code	WLL	Proof Load t	Suit Rope Ømm	Overall (mm)		Weight kg
	t			Height	Width	
07107080	0.25	0.50	15 – 16	215	75	1.0

Light capacity fixed eye marine block perfect for lifting the likes of cray pots.

- 5:1 design factor.
- AISI316 stainless steel block construction with nylon sheave.
- Open side plate allows fast rigging.



• Never exceed manufacturer's Working Load Limit (WLL).

# C&R BLOCKS & SHEAVES

## CRANE BLOCKS & PURSE BLOCKS

### SINGLE SHEAVE & MULTI SHEAVE CRANE BLOCKS

Proudly manufactured in New Zealand. All steel construction with billet sheave as standard.

- All designs approved by M.O.T. Marine Division and proof load tested to meet certification.
- SKF Ball Bearing sheave, SKF Thrust Bearing crosshead.
- Hook with safety latch as shown below.
- Powder-coated sideplates with zinc plated hardware for maximum corrosion resistance.
- Rope guided sheave. Greaseable.
- Range of sheave sizes and block rating available.

### SINGLE SHEAVE & MULTI SHEAVE PURSE BLOCKS

Proudly manufactured in New Zealand. Blocks can be used in a wide range of applications.

- Range of sheave sizes and ratings available (Ø 430mm 45T WLL Triple shown below right).
- Ball bearing, Roller bearing or Plain bearing sheave options.
- Single, Double and Triple Sheave configurations available.
- Galvanised, Zinc plated or Powder coated options.



Single Sheave Crane Block



Multi Sheave Crane Block



Multi Sheave Purse Block



• For further information or pricing and delivery on the C&R Crane Blocks or Purse Blocks, please contact your nearest Cookes branch or email [customerservices@bridoncookes.co.nz](mailto:customerservices@bridoncookes.co.nz).

# C&R BLOCKS & SHEAVES

## STEEL SHEAVES

Steel Sheaves – Plain Bearing (Bushed)

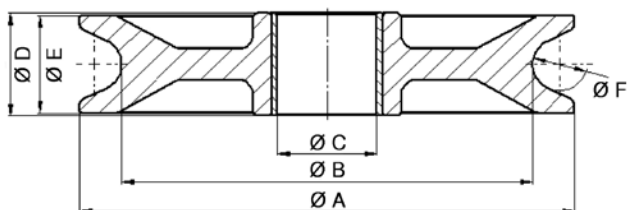


Product Code	Outside Ø	Suit Rope Ø*	Standard Bush Type	B.O.G. Ø	Shaft Ø	Hub Width	Rim Width
	A (mm)	F (mm)		B (mm)	C (mm)	D (mm)	E (mm)
07130054	50	6	Nylon	34	10	17	16
07130075	75	10	Nylon	52	12	27	24
07130100	100	10	Nylon	73	20	31	28
07130150	150	12	Bronze	124	35	31	29
07130200	200	16	Bronze	166	35	43	41
07130250	250	20	Bronze	210	45	59	57
07130300	310	26	Bronze	260	63.5	80	74
07132355	355	19	Bronze	310	60	60	56

\* Note: Sheaves can be grooved to suit your rope requirements.

Proudly manufactured in New Zealand.

- Fully machined from billet.
- Zinc plated for maximum corrosion resistance.



### CUSTOM ENGINEERED SHEAVES

Sheaves can be manufactured to your specifications. Refer your nearest Cookes branch or email [customerservices@bridoncookes.co.nz](mailto:customerservices@bridoncookes.co.nz).

#### Guide to ordering of your New Zealand Custom Manufactured Plain Bearing Pulley Sheaves:

Please specify the following details to ensure sheaves are manufactured accurately. Use drawing above as guide for required dimensional details.



Required Information:

Outside Ø	Suit Rope Ø	Finish / Bush Type	B.O.G. Ø	Shaft Ø	Hub Width	Rim Width
A (mm)	F (mm)		B (mm)	C (mm)	D (mm)	E (mm)

# C&R BLOCKS & SHEAVES

## STEEL SHEAVES

### Steel Sheaves – Ball Bearing

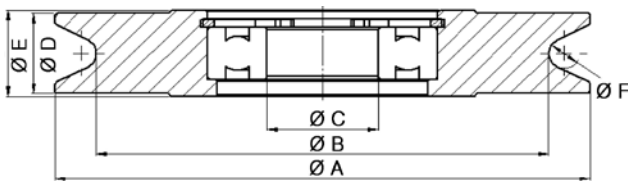


Product Code	Outside Ø	Suit Rope Ø*	B.O.G. Ø	Shaft Ø	Hub Width	Rim Width
	A (mm)	F (mm)	B (mm)	C (mm)	D (mm)	E (mm)
07130052	50	6	34	10	17	16
07130079	75	10	52	12	27	24
07130102	100	10	73	20	29.5	28
07130153	150	12	124	20	30.5	29
07130168*	168	9	142	35	28	26

\* Standard crane truck sheave.

Proudly manufactured in New Zealand.

- Fully machined from billet.
- Zinc plated for maximum corrosion resistance.
- SKF Single row deep groove ball bearing installed and circlipped as standard.



### CUSTOM ENGINEERED SHEAVES

Sheaves can be manufactured to your specifications. Refer your nearest Cookes branch or email [customerservices@bridoncookes.co.nz](mailto:customerservices@bridoncookes.co.nz).

#### Guide to ordering of your New Zealand Custom Manufactured Plain Bearing Pulley Sheaves:

Please specify the following details to ensure sheaves are manufactured accurately. Use drawing above as guide for required dimensional details.

Required Information:

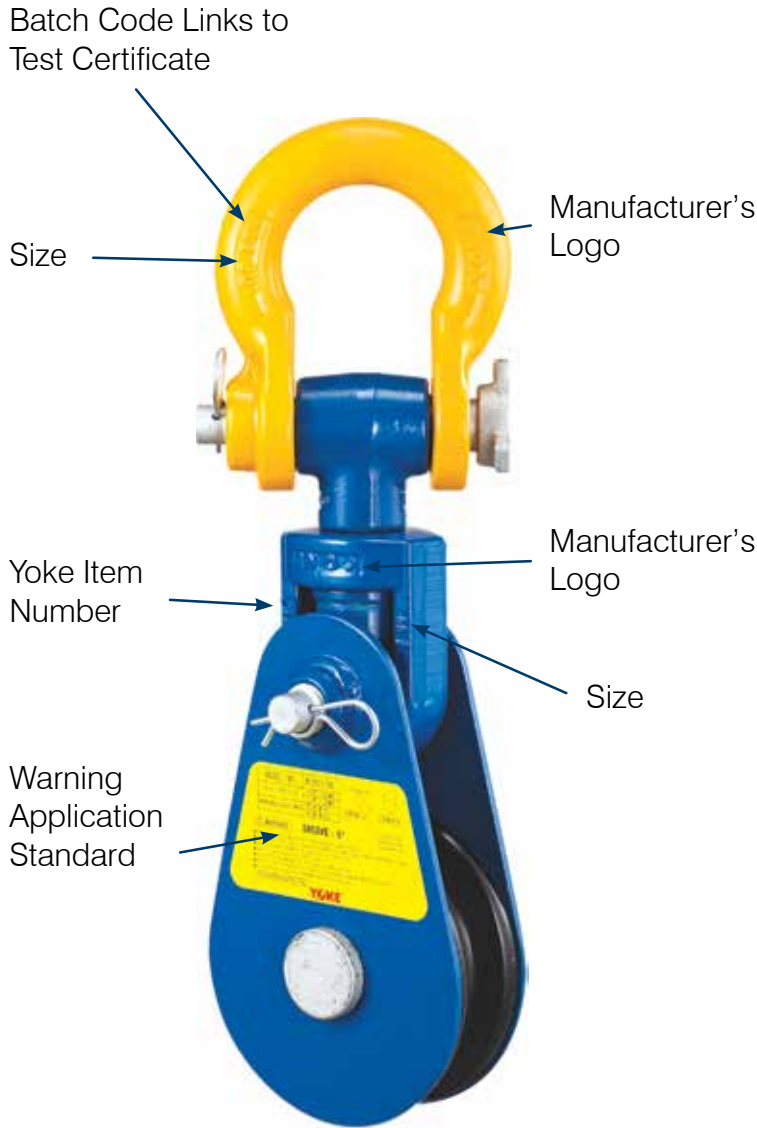
Outside Ø	Suit Rope Ø	Finish / Bush Type	Bearing Type	B.O.G. Ø	Shaft Ø	Hub Width	Rim Width
A (mm)	F (mm)			B (mm)	C (mm)	D (mm)	E (mm)



# YOKE BLOCKS

**COOKES IS PROUD TO BE NEW ZEALAND'S AUTHORISED DISTRIBUTOR FOR YOKE INDUSTRIAL.**

**Superior design features of Yoke Snatch Blocks:**



10

BLOCKS, PULLEYS & SWIVELS



Groove bottom hardened to 35 Rc to maximise durability.

Yoke Snatch Blocks are manufactured from closed-die drop forged steel and available in sheave sizes from 75mm to 300mm.

Quality Approvals: API, Q1, QMS, DNV



# YOKE BLOCKS

## SNATCH BLOCKS

Snatch Blocks – with Swivel Shackle



Product Code	Yoke Item No.	Dimensions (mm)			WLL (t)*		Sheave	Wire Rope	Weight
		A	B	C	Moving	Fixed	Ømm	Ømm	kg
02229002	8-501-02	227.6	75.0	35.5	2	1	75	8 – 10	2
02229004	8-501-04	355.1	107.5	64.0	4	2	112	10 – 13	6
02229008	8-501-0808	557.5	220.0	87.5	8	4	200	16 – 19	20
02229013	8-541-12	540.2	166.0	78.5	12	6	150	19 – 22	24
02229016	8-541-15	589.2	220.0	78.5	15	7.5	200	19 – 22	28
02229021	8-551-2012-25	832.8	330.0	109.5	20	10	300	25	63

\* For an explanation with diagram covering 'Fixed' and 'Moving' blocks, refer page 365.

High quality blocks manufactured under a strict quality control regime.

- Fully tested and certified.
- Closed-die forged sheaves.
- Ball bearings
- Swivel eye head fitting.
- 4:1 design factor.
- Batch number for full traceability.
- Manufactured in Taiwan.



• Never exceed manufacturer's Working Load Limit (WLL).

# MCKISSICK® BLOCKS



AVAILABLE ON INDENT

As New Zealand's authorised distributor for the Crosby Group, USA, Cookes has direct access to the world renowned Crosby McKissick® range of blocks and sheaves.



### Time Tested & Work Proven!

Crosby McKissick® blocks, overhaul balls and sheaves have been leading the way for more than 65 years, and have been utilised in the most demanding applications in every corner of the world. Crosby McKissick® offers world class products with unequalled service and customer support behind each one.

### Crosby Western & Crosby Lebus® blocks also available on indent

For a copy of the latest Crosby catalogue or the Crosby McKissick®, Western or Lebus® block range, please contact your nearest Cookes branch or email [customerservices@bridoncookes.co.nz](mailto:customerservices@bridoncookes.co.nz).



Western Block



Lebus Block

### The Crosby Experience

At Crosby, it's not just the product, it's the brand. With over 120 years in the making, market leadership has been sustained by the Crosby brand advantage. A brand built on market leading product lines and the idea that quality is never compromised and customer expectation must be met. A brand built on the desire to be the innovative leader in both product development and the utilisation of current technologies to ensure product users know how to properly use Crosby products.

When a contract reads Crosby or equal, it is not by accident, but instead based on the time tested and work-proven 'Crosby Experience'. The Crosby Difference is more than a slogan, it is a culture. Several generations of Crosby employees have, and continue to work hard every day to ensure the Crosby Difference remains strong. This difference is the synergy around the following attributes:

- Technical Leadership
- Innovative Solutions
- Vertically Integrated Manufacturing
- Premier User Support

Individually, each attribute is strong. But together, they differentiate Crosby throughout the industry, create a distinct competitive advantage and support the company's leading market position.

You owe it to yourself and the personnel that will be using the product to understand that there is no equal to Crosby.

Uncompromising quality does not just happen, it is a process that requires detail at every level. Whether drilling or servicing wells in the oil and gas industry, harnessing alternative energy sources, construction or mining, dependable Crosby products are on the job. Using their expertise to turn your challenges into industry solutions had made Crosby the market leader yesterday and today, and will keep Crosby the market leader tomorrow.

# OTHER BLOCKS

## GENERAL PURPOSE SNATCH BLOCKS

### Snatch Type Plain Bearing Pulley Blocks – with Swivel Oval Eye

Product Code		Working Load Limit (t)*		Sheave	Max. Rope
Single Sheave	Double Sheave	moving	fixed	Ømm	Ømm
02005603	02005703	0.5	0.25	75	8
02005604	02005704	1.0	0.5	100	10
02005606	02005706	2.0	1.0	150	12
02005608	02005708	3.0	1.5	175	14

\* For an explanation with diagram covering 'Fixed' and 'Moving' blocks, refer page 365.

A cost effective general purpose pulley block recommended for low use, non-industrial applications.

- Plain bearing.
- Rope becket.
- Manufactured in China.



### Snatch Type Ball Bearing Pulley Blocks – with Swivel Oval Eye

Product Code		Working Load Limit (t)*		Sheave	Max. Rope
Single Sheave	Double Sheave	moving	fixed	Ømm	Ømm
02005210	02005228	0.5	0.25	75	8
02005215	02005230	1.0	0.50	100	10
02005220	02005235	1.5	0.75	125	10
02005225	02005240	2.0	1.0	150	12
02005226	—	4.0	2.0	200	13

\* For an explanation with diagram covering 'Fixed' and 'Moving' blocks, refer page 365.

A cost effective general purpose pulley block recommended for low use, non-industrial applications.

- Ball bearings.
- Manufactured in China.



## CARGO LASHING BLOCKS

### Ship's Cargo Lashing Blocks – with Swivel Oval Eye

Product Code	Working Load Limit For Lashing (kg)	Sheave	Max. Wire Rope
		Ømm	Ømm
02006155	5,000	150	22

Designed specifically for cargo lashing applications.

- Proof tested to 10,000kg.
- Design Factor 4:1.
- Manufactured in China.



• Never exceed manufacturer's Working Load Limit (WLL).



# OTHER BLOCKS

## 4 WHEEL DRIVE BLOCKS

### 8T Economy 4WD Off-Road Recovery Block



Product Code	Max. Wire Rope	Sheave Dia.	Max. Pulling Load	Weight
	Ømm	mm	kg	kg
02007125	11	125	8,000	4.60



Economy imported 4WD Off-Road Recovery Block – 8,000kg Line Pull.

- Minimum Breaking Load 12 tonne.
- 125mm sheave to suit up to 11mm Ø wire rope.
- Manufactured in China.

### 8T NZ 4WD Off-Road Recovery Block



Product Code	Max. Wire Rope	Sheave Dia.	Max. Pulling Load	Weight
	Ømm	mm	kg	kg
02007125R	11	125	8,000	4.90



Locally manufactured, quality 4WD Off-Road Recovery Block – 8,000kg Line Pull.

- Minimum Breaking Load 12 tonne.
- Cast iron 125mm sheave with bronze bush. Suits up to 11mm Ø wire rope.
- Proudly manufactured in New Zealand.

### 15T H.D. 4WD Off-Road Recovery Block



Product Code	Max. Wire Rope	Sheave Dia.	Max. Pulling Load	Weight
	Ømm	Ømm	kg	kg
07128151	22	150	15,000	7.1



Locally manufactured, quality Heavy Duty 4WD Off-Road Recovery Block – 15,000kg line pull for the grunty jobs!

- Minimum Breaking Load 24 tonne.
- Cast iron 150mm sheave with bronze bush. Suits up to 22mm Ø wire rope.
- Proudly manufactured in New Zealand.



#### The Full 4WD Recovery Equipment Range

Cookes offer a full range of 4WD recovery equipment including their locally manufactured Snatch Master recovery straps.

Refer the 4WD Recovery Section of this catalogue or contact your local Cookes branch for more information:

Freephone 0508 274 366 or email [customerservices@bridoncookes.co.nz](mailto:customerservices@bridoncookes.co.nz)



- Designed for 4WD recovery use and not to be used for lifting applications.
- Never exceed the Maximum Pulling Load.

# OTHER BLOCKS

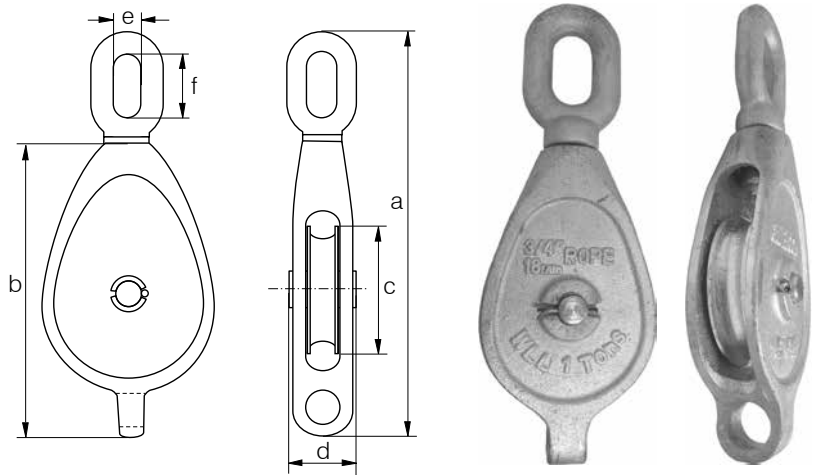
## FIBRE ROPE BLOCKS

### Galvanised Malleable Iron Fibre Rope Block – with Swivel Eye



Product Code	Van Beest Item No.	WLL (t)		Suit Rope	Dimensions (mm)						Weight
		moving	fixed	Ømm	a	b	Ø c	d	e	f	kg
02139004	G6917-0.4	0.4	0.2	12	164	118	45	39	14	25	0.7
02139008	G6917-0.8	0.8	0.4	16	232	158	62	45	18	37	1.4
02139100	G6917-1.0	1.0	0.5	18	270	178	82	49	24	52	1.8

- May also be used with wire rope.
- WLL marked on head fitting.
- Minimum breaking load four times WLL.
- Malleable Iron material.
- Hot dip galvanised finish.
- Ex Van Beest, The Netherlands.



NOTE: Discontinued line from manufacturer. Available only while stocks last.



#### Perfect For Manila Rope

These blocks are perfect for rigging up Manila ropes – Cookes can supply Manila rope in all sizes.

Contact your local Cookes branch for more information:

Freephone 0508 274 366 or email to [customerservices@bridoncookes.co.nz](mailto:customerservices@bridoncookes.co.nz)



• Never exceed manufacturer's Working Load Limit (WLL).

# SPECIAL BLOCKS

---

## STILL CAN'T FIND THE BLOCK YOU REQUIRE?

**Cookes** has access to the finest high quality blocks manufactured in New Zealand and throughout the world.

From wooden shell maritime blocks to construction blocks and NATO approved pulley blocks, **Cookes** can source exactly what you are looking for directly from world-renowned manufacturers.



Crosby McKissick®  
Tilt-Up Wall Block



Crosby McKissick®  
Tower Erection Block



NATO Approved  
Snatch Block



Crosby Western  
Wooden Shell Block



Crosby Western  
Gin Block

# CARE & USE OF BLOCKS

## SAFE USE & CARE INSTRUCTIONS

### Pre-Use

If you are unsure of the origin of the block or have any doubts at all in regard to its suitability for the job, **do not proceed**. Refer to a suitably qualified person for assessment.

- Ensure WLL markings are legible. If only one WLL rating is shown, always assume this is based on a 'moving block'.
- Ensure the correct block is selected taking into account the load being moved and the wire rope being used.
- Ensure the WLL is sufficient for the method of use. Refer 'fixed' and 'moving' block information below.
- Ensure block is free from nicks, gouges or cracks.
- Ensure the sheave rotates freely.
- Discard any block that shows signs of having been welded, heat treated, bent or modified in any way.

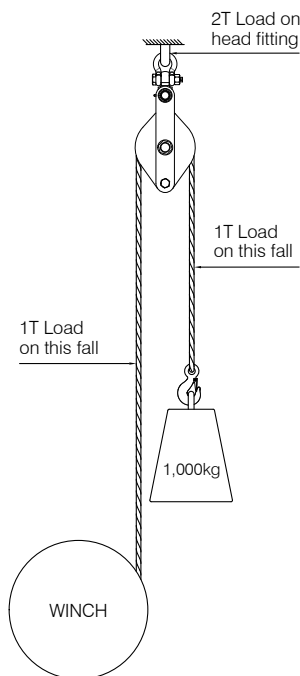
### In-Use

- Never exceed Working Load Limit (WLL).
- Avoid shock loading of block.
- Never side load a block.
- Ensure the shackle, hook or eye head fitting is supporting the load correctly.

 • Cookes can provide you with full inspection and recertification of your blocks.



### FIXED VS. MOVING BLOCK EXAMPLE USING 1 TONNE LOAD

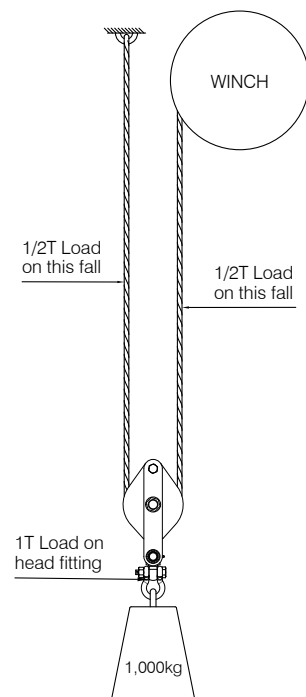


#### Fixed Block – Load approaches block

←  
Load is supported by 1 fall of rope.  
Line pull = 1T.  
Lifting at same speed as winch drum rotation.  
Block should have WLL of 2T minimum  
(if load approaches block, block should have a WLL of twice the load).

#### Moving Block – Block rises with load

→  
Load is supported by two falls of rope.  
Line pull = 1/2T.  
Lifting at 1/2 speed of winch drum rotation.  
Block should have WLL of 1T minimum  
(if load travels with block, block should have a WLL the same as the load).



Information supplied courtesy of C&R Equipment. To assist, **Cookes** has provided both fixed and moving block WLL figures where applicable through this catalogue section.



- Never exceed manufacturer's Working Load Limit (WLL).
- The load on a block will vary based on the angle between the incoming and departing lines. Refer details on following page.

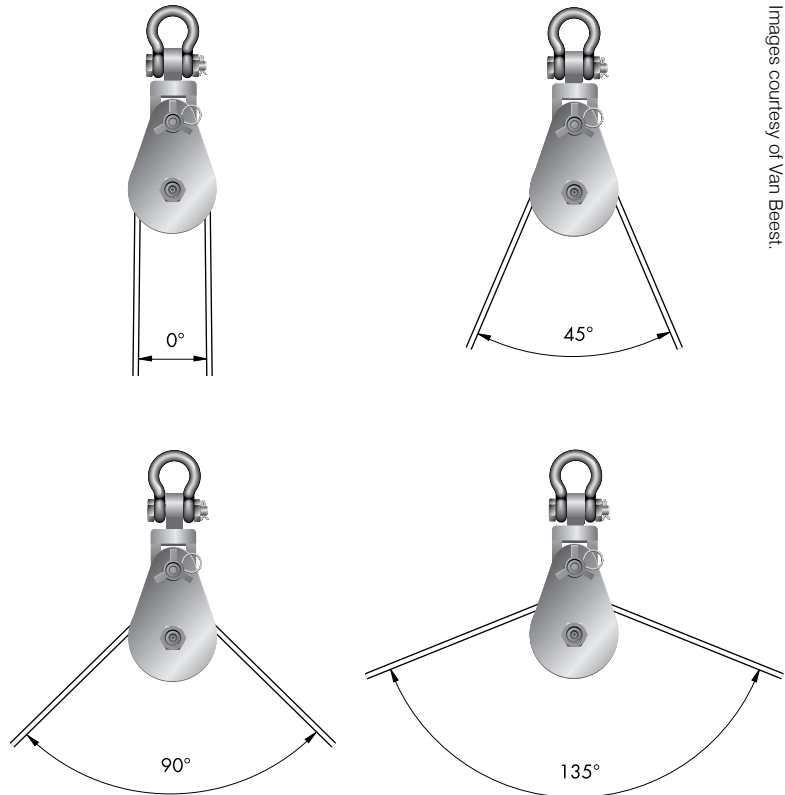
# CARE & USE OF BLOCKS

## SAFE USE & CARE INSTRUCTIONS

### Angle Factor Multipliers for Blocks

The load on a sheave or a block varies with the angle between the incoming and departing lines. As the working angle between the lines increase, the load on the block is reduced by the angle factor shown in the chart below.

Working Angle	Angle Factor
0°	2.00
10°	1.99
20°	1.97
30°	1.93
40°	1.87
45°	1.84
50°	1.81
60°	1.73
70°	1.64
80°	1.53
90°	1.41
100°	1.29
110°	1.15
120°	1.00
130°	0.84
135°	0.76
140°	0.68
150°	0.52
160°	0.35
170°	0.17
180°	0.00



Images courtesy of Van Beest.

# SWIVELS

## CERTIFIED SWIVELS FOR LIFTING APPLICATIONS

### Eye & Eye Lifting Swivels

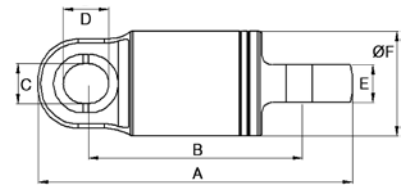


Product Code	WLL	Proof Load	Dimensions (mm)						Approx. Weight
	t	t	A	B	C	D	E	Ø F	kg
07260015	1.5	3	128.0	85.0	16.5	19.0	16	40.0	0.7
07265031	3.0	6	215.5	147.6	28.5	32.5	20	64.5	2.0
07260060	6.0	12	275.0	198.0	34.0	39.0	30	85.0	6.0
07260100	10.0	20	326.5	233.0	40.0	45.0	36	106.0	11.8
07260150	15.0	30	326.5	233.0	42.0	45.0	36	106.0	11.8
07260200	20.0	40	535.0	405.0	53.0	53.0	70	150.0	45.0
07260250	25.0	50	623.0	480.0	52.0	52.0	71	170.0	56.0
07260350	35.0	70	737.0	560.0	60.0	60.0	75	200.0	80.0
07260500	50.0	100	765.0	595.0	73.0	73.0	100	215.0	95.0

A high quality range of thrust bearing swivels certified for lifting applications.

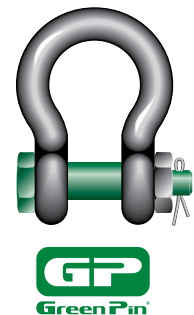
- Compact and rugged design.
- 5:1 design factor.
- Fully sealed, greaseable.
- SKF roller thrust bearings.
- Proof loaded to two times WLL.
- Zinc plated for corrosion resistance.
- Sizes up to 80 tonne WLL available.
- **Manufactured in New Zealand.**

C&R Certified Lifting Swivels are designed to suit Green Pin® Safety Bow Shackles as shown below.



### Green Pin® Safety Bow Shackles Compatibility Chart

Swivel	WLL	Corresponding Safety Anchor Shackle
Product Code	t	Product Code
07260015	1.5	02329013
07265031	3.0	02329019
07260060	6.0	02329026
07260100	10.0	02329035
07260150	15.0	02329042
07260200	20.0	02329051
07260250	25.0	02329051
07260350	35.0	02329057
07260500	50.0	02329070



• Clevis-Eye or Clevis-Clevis configurations manufactured to order.

• Never exceed manufacturer's Working Load Limit (WLL).

# SWIVELS

## INSULATED SWIVELS FOR LIFTING APPLICATIONS

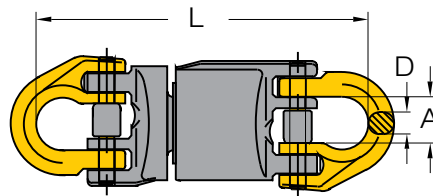
Insulated Swivels – Type 8-123



Product Code	Yoke Item No.	WLL	G80 Chain	Dimensions (mm)			Weight
		t	mm	A	D	L	kg
02469007	8-123-07	2.0	7, 8	18	9	131	0.7
02469010	8-123-10	3.15	10	25	11	162	1.5
02469013	8-123-13	5.3	13	30	16	214	3.2
02469016	8-123-16	8.0	16	36	19	243	5.4
02469019	8-123-20	12.5	18, 20	42	22	285	9.0

Designed for use during welding operations.

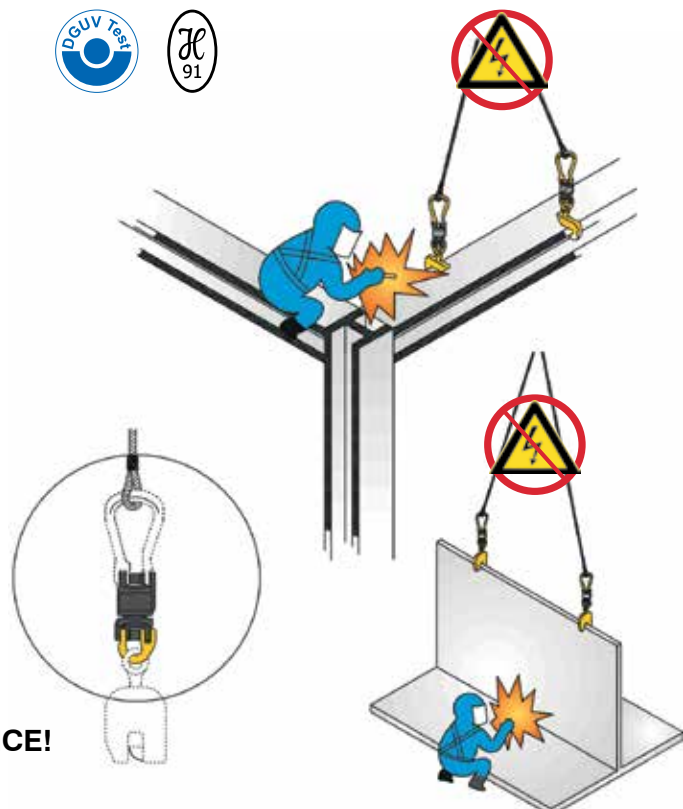
- Comes with two half connector links.
- Removable end fittings provides easy connection to chain or other components.
- Swivels under load.
- Design Factor 4:1 proof tested and certified.
- Complies with EN1677.
- Manufactured in Taiwan.



### YOKE INSULATION SOLUTION

The Yoke Insulated Swivel is designed to provide for protection during overhead crane or electric hoist welding operations.

- Heavy hoisting with a strong but lightweight system.
- Fully rotational at maximum Working Load Limit (WLL)
- Individual swivels & components are 100% proof load tested to a minimum of 2.5 times the Working Load Limit.
- All swivels are individually tested during manufacturing to assure 1,000 Volts insulating property.
- Test certificate is packed with each unit shipped.
- Acquired certificate approved by Deutsche Gesetzliche Unfallversicherung (DGUV).



**1,000 VOLTS RESISTANCE!**



• Never exceed manufacturer's Working Load Limit (WLL).

# SWIVELS

## CERTIFIED SWIVELS FOR NON-LIFTING APPLICATIONS

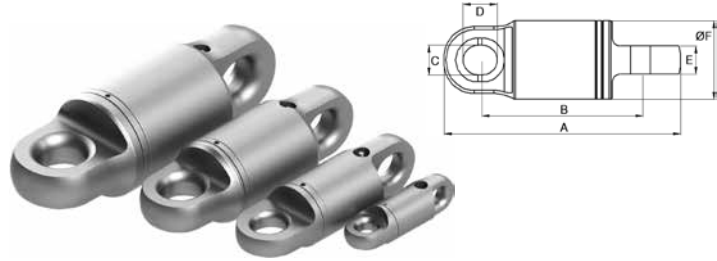
### Eye & Eye Trawl & General Purpose Swivels



Product Code	MWL *	Proof Load	Dimensions (mm)						Approx. Weight
	t	t	A	B	C	D	E	Ø F	kg
07265016	1.5	3	129.5	80.5	16.5	19	16	40	0.6
07265031	3	6	215.5	147.6	28.5	32.5	20	64.5	2.0
07265061	6	12	252.5	168.5	34.0	39	30	85	5.0
07265091	9	18	252.5	168.5	34.0	39	30	85	5.0
07265101	10	20	312.5	212.5	40	45	38	106	11.0
07265150	15	30	312.5	212.5	40	45	38	106	12.0
07265260	26	52	623.0	480.0	52	52	71	170	56.0

A high quality range of roller thrust bearing swivels for trawling, logging & general purpose applications.

- Fully sealed, greaseable.
- SKF roller thrust bearings.
- Eyes will accept shackles or hammerlocks.
- 5:1 design factor.
- Proof loaded to two times MWL.
- Zinc plated for corrosion resistance.
- **Manufactured in New Zealand.**



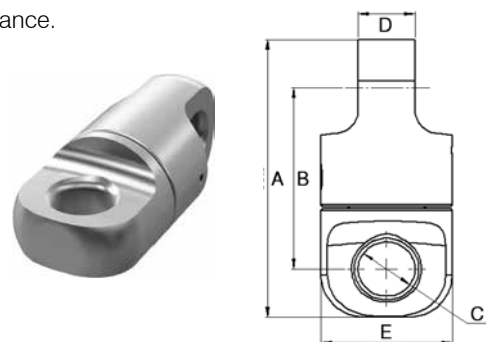
### Midget Stainless Steel Swivels – Eye & Eye



Product Code	MWL *	Proof Load	Dimensions (mm)					Approx. Weight
	t	t	A	B	C	D	Ø E	kg
07250010	0.5	1.0	66.5	43.5	13	13	30	0.21

Fully machined 316 Stainless Steel construction for maximum corrosion resistance. Fully ball raced for smooth swivel action and long service life.

- Compact and durable design.
- Greaseable.
- Eyes will accept shackles.
- 5:1 design factor.
- Proof loaded to two times MWL.
- **Manufactured in New Zealand.**



• MWL: The Maximum Working Load is shown only for guidance in selecting a swivel with sufficient strength for the intended application.



• Clevis-Eye or Clevis-Clevis configuration manufactured to order. Larger sizes manufactured to order.



• With the exception of item 07265031 these swivels are not suitable for industrial lifting applications.  
• For certified lifting swivels, refer page 367.