





# STAINLESS STEEL CHAIN & FITTINGS

<b>Stainless Steel – Lifting</b> .....	<b>536</b>
Corrosion Resistance Table .....	<b>537</b>
Chain Sling Working Load Limits .....	<b>538</b>
Chain & Connectors .....	<b>539</b>
Master Links & Multi Links .....	<b>540</b>
Sling Hooks .....	<b>541</b>
Grab Hooks .....	<b>542</b>
Eye Bolts & Eye Nuts .....	<b>543</b>
Starpoint Eye Bolts .....	<b>544</b>
Weld-On Lifting Eye .....	<b>545</b>
Screw Pin Dee Shackles .....	<b>546</b>
Safety Pin Bow Shackles .....	<b>547</b>
Care & Use Instructions .....	<b>548</b>
<b>Stainless Steel – Certified</b> .....	<b>549</b>
Maillon Rapides® .....	<b>549</b>
<b>Stainless Steel – Commercial</b> .....	<b>551</b>
Wire Rope Grips .....	<b>553</b>
Wire Rope Thimbles .....	<b>554</b>
Light Duty Thimbles .....	<b>555</b>
Turnbuckles .....	<b>556</b>
Rigging Screws .....	<b>557</b>
Eye Bolts .....	<b>558</b>
Eye Nuts .....	<b>559</b>
Pulleys .....	<b>560</b>
Chain & Quick Links .....	<b>561</b>
Shackles .....	<b>562</b>
Snap Shackles .....	<b>565</b>
Swivels .....	<b>566</b>
Karabiners .....	<b>567</b>
Snap Hooks .....	<b>569</b>
Eye Hooks .....	<b>570</b>
S-Hooks .....	<b>571</b>
Round Rings & Dee Rings .....	<b>572</b>

# STAINLESS STEEL – LIFTING

---

## STAINLESS STEEL-LIFTING & STAINLESS STEEL-COMMERCIAL


### What is the difference?

With the proliferation of stainless steel chain and fittings now available on the market, it can be daunting to establish which items are suitable for industrial lifting applications.

Many products are not suitable for lifting applications even though Safe Working Load, Working Load Limit, or Minimum Breaking Load figures may be indicated. They may even have test certificates available.

There are certain characteristics that will identify a product suitable for lifting applications. This guide is provided to help keep you safe through making informed purchasing decisions.

### Essential when sourcing stainless steel products for lifting applications

- A reputable product manufacturer.
- A supplier with lifting equipment knowledge and experience.
- Products that are marked with a Working Load Limit (WLL) or Safe Working Load (SWL).
- Additional identification markings on the product which clearly trace back to a manufacturer's test certificate.
- A copy of the manufacturer's test certificate is able to be supplied upon request.
- A supplier with the ability to tag certified lifting products and issue a corresponding Conformance Certificate.
- Cookes stainless steel products that are certified for lifting applications show a  in this section.

### Strongly recommended when sourcing stainless steel products for non-lifting applications where some loading will be applied

- A reputable product manufacturer.
- A supplier with the experience to assist in making the correct product choice.
- Manufacturer's test certificates are available on request to provide Minimum Breaking Load (MBL) information.
- A minimum 4:1 design factor from MWL (Maximum Working Load) to MBL (Minimum Breaking Load). \*Refer MWL explanation below.

- 
- MWL: Maximum Working Loads are for guidance only in selection of product with sufficient strength for intended application.



- Cookes stainless steel products that are not suitable for lifting applications, but carry Maximum Working Load (MWL) information, feature in the 'Stainless Steel-Commercial' section of this catalogue.

# STAINLESS STEEL – LIFTING

## CORROSION RESISTANCE TABLE

Corrosion Resistance Table for Stainless Steel AISI 316

Substance	Resistance	Substance	Resistance
Acetic Acid <20%	S	Hydrogen Cyanide 100%	L
Ammonia (100%)	S	Hydrogen Peroxide <35%	S
Ammonium Chloride <1%	S	Hydrogen Sulphide 100%	S
Ammonium Nitrate 10% – 50%	S	Mineral Oil	S
Ammonium Sulphate <10%	L	Nitric Acid <10%	S
Benzene	S	Potassium Sulphate <10%	S
Calcium Hypochlorite (100%)	U	Sodium Chloride <5%	S
Citric Acid <10%	S	Sodium Hypochlorite <20%	L
Copper Sulphate <10%	S	Sodium Nitrate 10% – 40%	S
Ethanol	S	Sodium Sulphate <10%	S
Gasoline	S	Zinc Chloride <10%	S
Hydrochloric Acid (all concentrations)	U	Zinc Sulphate <10%	S

Table courtesy of Excel, France, a division of Van Beest NL

### Corrosion Resistance Table for Stainless Steel AISI 316

The corrosion resistance table for stainless steel is provided as a guide only and should not be considered as a substitute for testing under specific conditions.

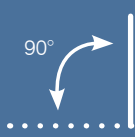





#### Abbreviations used

- S = Satisfactory, no or very little corrosion.
- L = Limited resistance, exposure time must be limited, some corrosion might occur.
- U = Unsatisfactory, not suitable for use.

# STAINLESS STEEL – LIFTING

## CHAIN SLING WORKING LOAD LIMITS (WLL)

The Uniform Method for Rating Stainless Steel Chain Slings

Lifting Mode	1 Leg Sling	2 Leg Sling		3 & 4 Leg Sling		Endless Sling
						
Chain Ø	Factor 1.0	Factor 1.4	Factor 1.0	Factor 2.1	Factor 1.5	Factor 1.6
mm	90°	0° < β ≤ 45°	45° < β ≤ 60°	0° < β ≤ 45°	45° < β ≤ 60°	
6.00	0.70	1.00	0.70	1.47	1.05	1.12
8.00	1.20	1.70	1.20	2.50	1.80	1.92
10.00	1.60	2.25	1.60	3.36	2.40	2.56
13.00	2.70	3.80	2.70	5.70	4.05	4.32

### WORKING LOAD LIMITS IN TONNES FOR STAINLESS STEEL CHAIN SLINGS

The Working Load Limits (WLL) listed in the table above are the maximum weights which slings are designed to sustain in General Lifting Service according to the standard uniform load method of rating.

General Purpose Chain Slings must always be rated by the Uniform Method. Under this method, four-leg chain slings have the same WLL rating as three-leg slings based on an assumption that at least one leg of a four-leg sling may not be accepting its full share of the load.

In exceptionally hazardous conditions or in any other circumstances which might indicate a need for WLL lower than the designated figure, the degree of hazard should be assessed by a competent person and a Safe Working Load (SWL) determined.



• When slings are used in a choke hitch or grab hooks fitted as bottom hooks, the WLL must be reduced by 20%.



- Never exceed manufacturer's Working Load Limit (WLL).
- Never use stainless steel chain and components for lifting unless you have tagged and certified sling assemblies from a reputable supplier.

# STAINLESS STEEL – LIFTING

## CHAIN & CONNECTORS

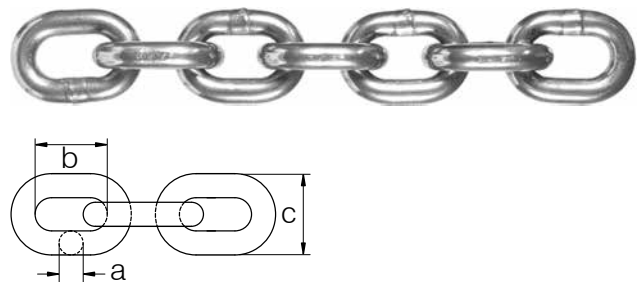
### Stainless Steel Lifting Chain

**EXCEL**<sup>®</sup>

Product Code	Excel Item No.	WLL	Dimensions (mm)			Links	Weight
		t	Ø a	b	c	per Meter	per Meter
02479006	CHAIN6I	0.7	6	18	21	55.56	0.78
02479008	CHAIN8I	1.2	8	24	29	41.67	1.30
02479010	CHAIN10I	1.6	10	30	34	33.33	2.14
02479013	CHAIN13I	2.7	13	39	45	25.64	3.64

Stainless Steel Lifting Chain. Polished finish.

- AISI316L material.
- Tested and certified.
- 4:1 design factor.
- Manufactured in France.



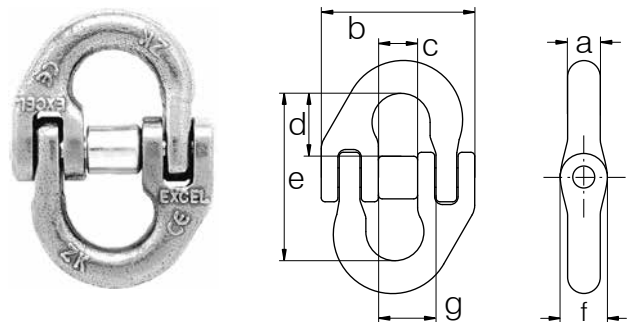
### Stainless Steel Connecting Links

**EXCEL**<sup>®</sup>

Product Code	Excel Item No.	WLL	For Chain	Dimensions (mm)							Weight
		t	Ømm	Ø a	b	c	d	e	f	g	kg
02481106	MJ6I	0.7	6	8	43	11	14	45	11	16	0.10
02481108	MJ7/8I	1.2	7 – 8	9	52	14	18	55	14	20	0.16
02481110	MJ10I	1.6	10	13	70	16	25	73	18	25	0.36
02481113	MJ13I	2.7	13	18	85	19	32	92	25	28	0.73

Stainless Steel Connectors. Polished finish.

- AISI316L material.
- 4:1 design factor.
- Manufactured in France.



**i** • For stainless steel lifting chain sling WLL chart refer page 538.

**!** • Never exceed manufacturer's Working Load Limit (WLL).

# STAINLESS STEEL – LIFTING

## MASTER LINKS & MULTI LINKS

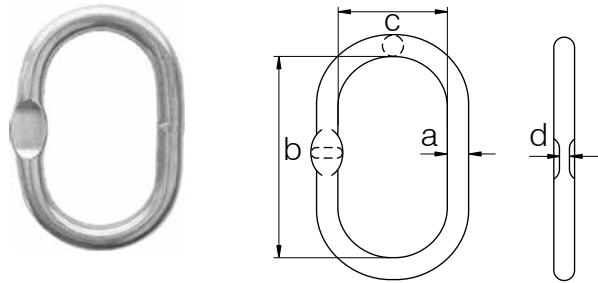
### Stainless Steel Master Links for 1 & 2-Leg Slings

**EXCEL**<sup>®</sup>

Product Code	Excel Item No.	WLL	Ø 1 Leg	Ø Chain 2 Legs (mm)		Dimensions (mm)				Weight
		t	mm	$\beta \leq 45^\circ$	$\beta \leq 60^\circ$	a	b	c	d	kg
02480006	MS13I	0.75	6	—	6	13	110	60	6	0.34
02480008	MS16I	1.25	8	6	8	16	110	60	6	0.53
02480010	MS18I	2.00	10	8	10	18	135	75	8	0.82
02480013	MS22I	3.20	13	10	13	22	160	90	10	1.45
02480016	MS26I	5.00	16	13	16	26	180	100	14	2.29

Stainless Steel Master Links. Polished finish.

- AISI316L material.
- Tested and certified.
- 4:1 design factor.
- Manufactured in France.



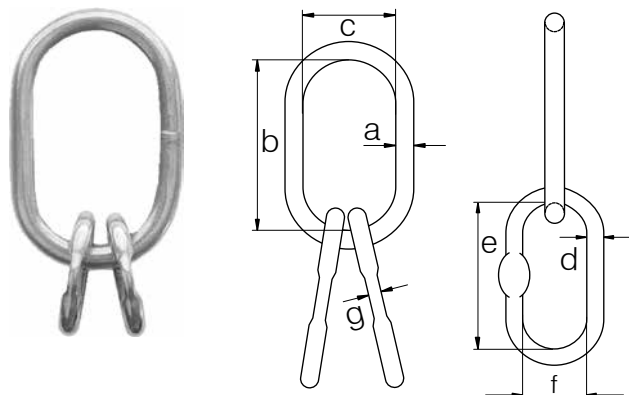
### Stainless Steel Multi Oblong Links for 3 & 4-Leg Slings

**EXCEL**<sup>®</sup>

Product Code	Excel Item No.	WLL	3/4 Legs	Dimensions (mm)							Weight
		t	Ømm	Ø a	b	c	d	e	f	g	kg
02480106	MTS18I	1.60	6	18	135	75	13	54	25	6	1.17
02480108	MTS22I	2.65	8	22	160	90	16	70	34	8	2.17
02480110	MTS26I	4.25	10	26	180	100	18	85	40	8	3.34
02480113	MTS32I	6.70	13	32	200	110	22	115	50	13	5.99

Stainless Steel Multi Oblong Links. Polished finish.

- AISI316L material.
- Tested and certified.
- 4:1 design factor.
- Manufactured in France.



• For stainless steel lifting chain sling WLL chart refer page 538.



• Never exceed manufacturer's Working Load Limit (WLL).

# STAINLESS STEEL – LIFTING

## SLING HOOKS

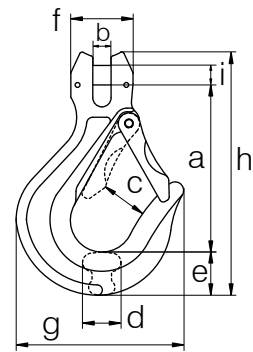
### Stainless Steel Clevis Sling Hooks

**EXCEL**<sup>®</sup>

Product Code	Excel Item No.	WLL	For Chain	Dimensions (mm)									Weight
		t	Ømm	a	b	c	d	e	f	g	h	Ø i	kg
02483006	CSC6I	0.7	6	76	7	25	15	19	27	73	108	8	0.29
02483008	CSC7/8I	1.2	8	95	9	28	20	22	32	85	133	9	0.55
02483010	CSC10I	1.6	10	113	11	28	24	28	41	106	164	13	0.97
02483013	CSC13I	2.7	13	138	15	38	32	40	52	133	208	16	1.86

Stainless Steel Clevis Sling Hook c/w Safety Catch.

- Polished finish.
- AISI316L material.
- Tested and certified.
- 4:1 design factor.
- Manufactured in France.



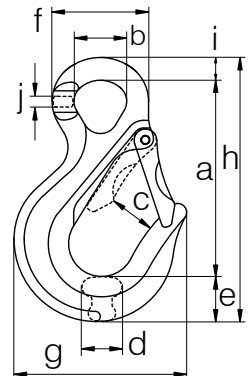
### Stainless Steel Eye Sling Hooks

**EXCEL**<sup>®</sup>

Product Code	Excel Item No.	WLL	For Chain	Dimensions (mm)										Weight
		t	Ømm	a	Ø b	c	d	e	Ø f	g	h	i	j	kg
02483106	CSO6I	0.7	6	86	23	27	15	19	43	73	115	10	7	0.28
02483108	CSO7/8I	1.2	8	102	26	27	19	23	51	87	137	13	8	0.56
02483110	CSO10I	1.6	10	121	35	28	23	29	66	106	165	15	11	1.02
02483113	CSO13I	2.7	13	155	41	33	31	36	76	136	208	19	14	1.77

Stainless Steel Eye Type Sling Hooks c/w Safety Catch.

- Polished finish.
- AISI316L material.
- Tested and certified.
- 4:1 design factor.
- Manufactured in France.



• For stainless steel lifting chain sling WLL chart refer page 538.



• Never exceed manufacturer's Working Load Limit (WLL).



# STAINLESS STEEL – LIFTING

## GRAB HOOKS

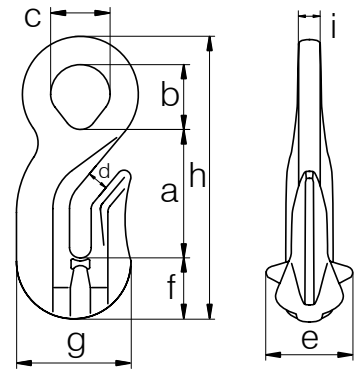
### Stainless Steel Eye Grab Hooks

**EXCEL**<sup>®</sup>

Product Code	Excel Item No.	WLL	For Chain	Dimensions (mm)									Weight
		t	Ømm	a	b	c	d	e	f	g	h	i	kg
02483208	CRO7/8I	1.2	7 – 8	52	20	20	10	33	23	46	108	8	0.32
02483210	CRO10I	1.6	10	53	29	29	12	41	28	58	123	10	0.53
02483213	CRO13I	2.7	13	89	43	39	15	56	40	78	192	18	1.64

Stainless Steel Eye Grab Hook. No reduction in WLL when used as a shortening hook.

- Polished finish.
- AISI316L material.
- Tested and certified.
- 4:1 design factor.
- Manufactured in France.



- Where grab hooks are fitted as bottom hooks or chain is choked, the sling WLL must be derated by 20%.
- For stainless steel lifting chain sling WLL chart refer page 538.



- Never exceed manufacturer's Working Load Limit (WLL).

# STAINLESS STEEL – LIFTING

## EYE BOLTS & EYE NUTS

### Stainless Steel Eye Bolts – with Longer Thread

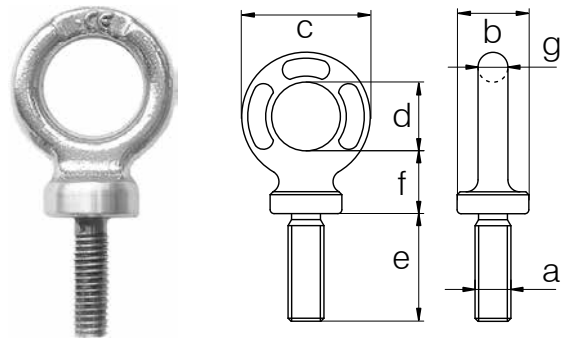
**EXCEL®**

Product Code	Excel Item No.	WLL *	Dimensions (mm)							Weight
		t	a	b	c	d	e	f	g	kg
02487010	AL10I	0.4	M10 x 1.50	20	38	22	30	19	8	0.08
02487012	AL12I	0.6	M12 x 1.75	25	47	26	36	23	10	0.14
02487016	AL16I	1.0	M16 x 2.00	36	65	35	55	30	14	0.37
02487020	AL20I	2.0	M20 x 2.50	40	73	39	59	34	16	0.58
02487024	AL24I	3.0	M24 x 3.00	55	95	54	84	40	20	1.12

\* WLL applicable when angle of use is limited to 30° from the axis.

Stainless Steel Eye Bolt. Longer thread length than DIN580 eye bolts (refer column e).

- Polished finish.
- AISI316L material.
- Tested and certified.
- 5:1 design factor.
- Manufactured in France.



### Stainless Steel Eye Nuts

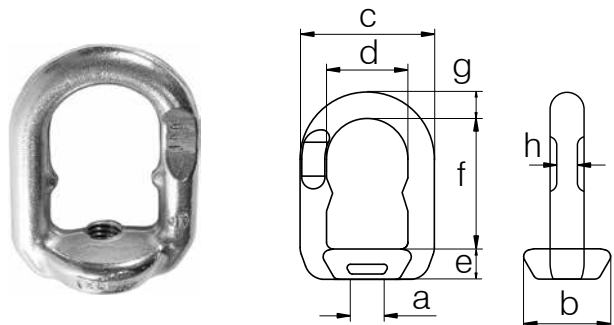
**EXCEL®**

Product Code	Excel Item No.	WLL *	Dimensions (mm)								Weight
		t	a	b	c	d	e	f	g	h	kg
02486010	EL10I	0.4	M10 x 1.50	31	51	30	14	44	11	6	0.15
02486012	EL12I	0.6	M12 x 1.75	39	56	32	15	48	12	7	0.23
02486016	EL16I	1.0	M16 x 2.00	44	66	37	17	60	14	9	0.37
02486020	EL20I	2.0	M20 x 2.50	44	66	37	17	60	14	9	0.37
02486024	EL24I	3.0	M24 x 3.00	52	81	48	21	75	17	11	0.63

\* WLL applicable when angle of use is limited to 30° from the axis.

Stainless Steel Eye Nut. Polished finish.

- AISI316L material.
- Tested and certified.
- 5:1 design factor.
- Manufactured in France.



⚠️ • Never exceed manufacturer's Working Load Limit (WLL).  
 • Never exceed WLL. Any angle of use beyond 30° from the axis will decrease the WLL substantially.  
 • Always inspect eye bolts and eye nuts before use.

# STAINLESS STEEL – LIFTING

## STARPOINT EYE BOLTS

### Stainless Steel Eye Bolt – Multi-Directional Loading



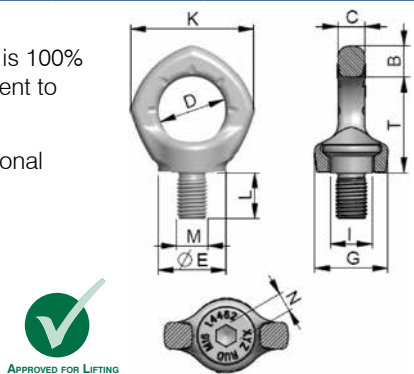
Product Code	RUD Item No.	WLL	Dimensions (mm)											N. W.
		t	B	T	C	D	E	G	I	K	L	M	N	kg
09104552*	Inox Star M12	0.5	14	43	10	30	30	32	20	56	18	12	8	0.2
09104554*	Inox Star M16	1.0	16	50	14	35	35.5	38	23.5	65	24	16	10	0.3
09104556*	Inox Star M20	2.0	19	57	16	40	41	46.5	29	74	30	20	12	0.5
09104558*	Inox Star M24	2.5	24	70	19	48	50	56	35	92	36	24	14	0.9

\* Available on indent.

The INOX-STAR Eye Bolt offers a functional, compact innovative design. The range is 100% electro-magnetic crack tested and it's pentagonal shape makes it significantly different to the DIN 580 eyebolt.

Manufactured from stainless steel – 50% higher loading than DIN with no directional restrictions.

- 100% electro-magnetic crack detection tested.
- Turns through 360°. Can be set in the direction of the load.
- 4 :1 design factor.
- Forged eye body and screw with captive, mounted bolt.
- Pentagon shape is clearly distinguishable from other eye bolts.
- Manufactured in Germany.



### VRM Working Load Limits – G in Tonnes

Lifting Mode		Single Leg		2, 3 or 4 Legs		
					60°	90°
Product Code	RUD Item No.					
09104552	Inox Star M12	1.2	0.5	0.87	0.71	0.5
09104554	Inox Star M16	2.4	1.0	1.7	1.4	1.0
09104556	Inox Star M20	3.6	2.0	3.5	2.8	2.0
09104558	Inox Star M24	5.2	2.5	4.3	3.5	2.5



RUD Item No.	Torque
Inox Star M12	25 Nm
Inox Star M16	60 Nm
Inox Star M20	115 Nm
Inox Star M24	190 Nm

• CAD drawings available upon request.

• For permanent installation tighten to torque specified in the table above.  
• For a temporary assembly, hand tightening with an allen key is sufficient.

• Never exceed manufacturer's Working Load Limit (WLL).  
• Always inspect lifting points carefully before each use!

# STAINLESS STEEL – LIFTING

## WELD-ON LIFTING EYE

### Stainless Steel Load Rings – LBS-RS

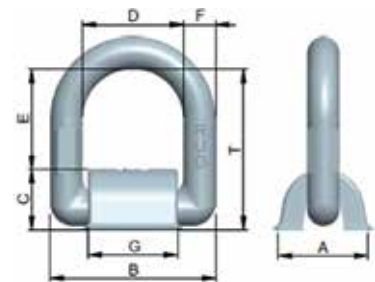


Product Code	RUD Item No.	WLL t	Dimensions (mm)									Net Weight kg
			A	B	C	D	E	Ø F	G	H	T	
09104191*(1)	LBS-RS 0.5	0.5	32	65	36	25	39	13.5	33	69	64	0.3
09104192*(1)	LBS-RS 1	1.0	42	85	50	31	50	16.5	46	87	81	0.6
09104193*	LBS-RS 2	2.0	61	110	65	44	72	22.5	60	125	116	1.6

\* Available on indent. (1) Without spring.

Stainless steel load ring for welding. Manufactured from material 1.4571 (stainless steel). The chemical resistance and resistance against pitting by chloride media has been increased due to the Mo content.

- Incorporates a 180° pivoting action for multi position loading.
- In it's welded condition is resistant against intercrystalline corrosion, when being used in permanent operation, up to 400°C.
- The material 1.4571 is widely used in the chemical, petroleum, coal-tar, chemistry and textile industries.
- Manufactured in Germany.



Distance lugs for root weld.



### LBS-RS Working Load Limits – G in Tonnes

Lifting Mode		Single Leg		2, 3 or 4 Legs		
					60°	90°
Product Code	RUD Item No.					
09104191	LBS-RS 0.5	0.5	0.5	0.86	0.70	0.5
09104192	LBS-RS 1	1.0	1.0	1.70	1.40	1.0
09104193	LBS-RS 2	2.0	2.0	3.50	2.80	2.0



- Welding instructions supplied.
- CAD drawings available upon request.



- Never exceed manufacturer's Working Load Limit (WLL).
- Always inspect lifting points carefully before each use!

# STAINLESS STEEL – LIFTING

## SCREW PIN DEE SHACKLES

Stainless Steel Dee Shackles



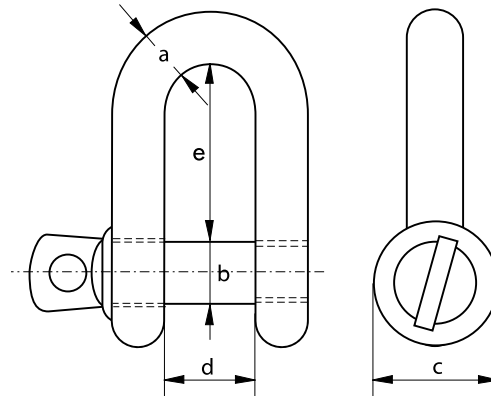
Product Code	WLL	Dimensions (mm)					Weight
	t	a	b	c	d	e	100pcs/kg
02321006	0.15	6	6	12	12	24	2.4
02321008	0.30	8	8	16	16	32	5.6
02321010	0.40	10	10	20	20	40	13.0
02321012	0.60	12	12	24	24	48	20.0
02321016	1.00	16	16	32	32	64	48.0
02321019	1.50	20	20	40	40	80	84.0
02321022	2.00	22	22	44	44	88	127.0



Van Beest  
Item #: R-7821

In general accordance with DIN82102.

- AISI316 Material.
- Polished finish.
- Tested and certified.
- 6:1 design factor.
- Marked with WLL.
- Manufactured in The Netherlands.



• Cookes recommend certified, corrosion resistant Van Beest Stainless Steel Shackles for industrial lifting applications.



• Never exceed manufacturer's Working Load Limit (WLL).

# STAINLESS STEEL – LIFTING

## SAFETY PIN BOW SHACKLES

### Stainless Steel Bow Shackles

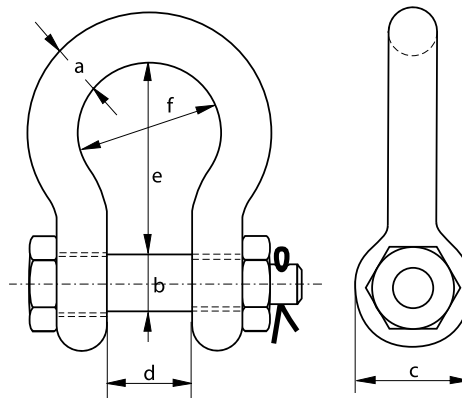


Product Code	WLL	Dimensions (mm)						Weight
	t	a	b	c	d	e	f	100pcs/kg
02324008	0.3	8	8	16	16	32	24	7.2
02324010	0.4	10	10	19	20	40	30	13.4
02324012	0.6	12	12	24	25	49	36	23.0
02324016	1.0	16	16	31	32	64	48	56.6
02324019	1.5	19	19	38	38	80	60	95.2
02324022	2.0	22	22	43	44	85	66	146.0
02324025	3.0	25	25	49	50	100	75	218.0



Van Beest  
Item #: R-7827

- AISI316 Material.
- Polished finish.
- Tested and certified.
- 6:1 design factor.
- Marked with WLL.
- Manufactured in The Netherlands.



• Cookes recommend certified, corrosion resistant Van Beest Stainless Steel Shackles for industrial lifting applications.



• Never exceed manufacturer's Working Load Limit (WLL).

# STAINLESS STEEL – LIFTING

---

## CARE & USE INSTRUCTIONS

### All stainless steel items should be inspected before use to ensure that:

- All markings are legible.
- All items are free from nicks, gouges and cracks.
- Items with the correct Working Load Limit have been selected with respect to the sling design i.e. the load to be lifted, the number of legs in the sling, the top angle etc. For further details, refer to EN818, norm for chain slings.
- Items may not be heat treated as this may affect their Working Load Limit.
- Never modify, repair or reshape an item by machining, welding, heating or bending as this may affect the WLL.
- Master links and the other items of the sling are all identifiable as being in stainless steel and for lifting purposes.
- Items should be used for straight in line loading only to avoid bending.
- Items are not distorted or unduly worn.

It is required that products are regularly inspected because the products in use may be affected by wear, misuse, overloading, etc. with a consequence of deformation and alteration of the material structure.

Inspection by a competent person should take place at least every six months and more frequently when the components are used in severe operating conditions.

### Additional instructions for lifting eyes

- Lifting eyes should never be side-, tip- or back-loaded.
- Always make sure that the lifting eye is supporting the load correctly.
- Lifting point should be seated correctly in the bowl of the hook.
- Lifting point should be well fixed in the load (same thread, well positioned).

The shank length should be adapted to the material of the load. The shank should be long enough, i.e. 1.5 times the diameter for hard materials and three times for softer materials like aluminum and brass. The length must not be less than 1.5 times the diameter (e.g. M20, minimum length 30mm). For softer material, consider a longer length and through-hole mounting with a nut and washer on the other side. The material to which the lifting point will be attached should be strong enough to withstand lifting forces without any deformation. The lifting point must be adapted to the hook size in order to be positioned correctly in the bowl of the hook.

### Assembly

- The bolt thread and the tapped hole in the load must be compatible and both in a good state.
- The depth of the tapping should be at least 20% more than the shank length.
- The surface should be flat and perpendicular to the lifting eye shank providing full contact with the lifting eye.
- When a bolt is screwed on the shank, it must be at least Class 5.
- Never use a sling as a loop between two lifting eyes.
- Consider the centre of gravity of the load to position the lifting eyes (symmetric to the centre)
- The tapping must be positioned at a distance of at least three times the shank diameter from the edge of the load.

For Eye Bolts & Eye Nuts, the angle of use is limited to 30° from the axis.

Beyond 30° the Working Load Limit will decrease drastically.

- The assembly must be hand tightened without any tool or lever.
- The lifting eye should be screwed until the base is flush with the surface of the load.

### Chemical Resistance

For guidance refer chemical resistance table on page 537.

# STAINLESS STEEL – CERTIFIED

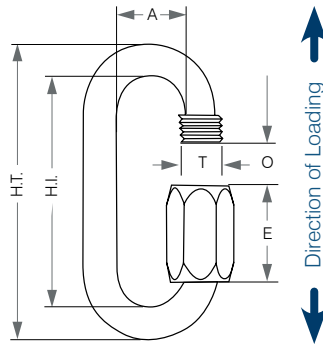
## MAILLON RAPIDES®



### The Original Maillon Rapide®

Produced in France by the Péguet family business for over 70 years, the Maillon Rapide® Quick Link is best described as a mechanical connector composed of a rod and nut with its design based on the principle of a chain link.

While there are many brands of Quick Links on the market, very few offer the safety features and quality control of a genuine Maillon Rapide®.



### Standard Maillon Rapide®

Product Code	Péguet Item No.	WLL	MBL	Ø Size	Dimensions (mm)						Weight
		t	kg	mm	H.T.	H.I.	A	O	E	T	g
09569507	MRNI7.0	0.9	4,500	7	66	52	16.0	8,5	21,5	10	52
09569508	MRNI8.0	1.1	5,500	8	74	58	17,5	11	24.0	11	79
09569510	MRNI10.0	1.8	9,000	10	89	69	20,5	12	29.0	13	141
09569512	MRNI12.0	2.5	12,500	12	104,5	80,5	23,5	15	33.0	15	238
09569514	MRNI14.0	3.5	17,500	14	121	93	26,5	17	38,5	17	374
09569516	MRNI16.0	4.5	22,500	16	140	108	29,5	19	45.0	19	576

Specifications	
Rod	Nut
X2 Cr Ni	Norme / Standard X2 Cr Ni
Mo 17-12-2 (1.4404) AISI 316L	Mo 17-12-2 (1.4404) AISI 316L

Certified for permanent or semi-permanent connections. Extensive quality control procedures through the full manufacturing process.

- Clearly marked with Working Load Limit.
- Design factor 5:1. Non-magnetic.
- AISI316 austenitic stainless steel material.
- Protected from inter-granular corrosion.
- Manufactured in France.



- Never exceed manufacturer's Working Load Limit (WLL).
- Maillon Rapides may only be loaded along the major axis.
- Nut must be fully engaged with no thread showing prior to loading.
- For permanent connections always tighten to adequate torque using a wrench.
- Check all connections on a regular basis.
- When connected to chain the Maillon Rapide Quick Link must be of the same material diameter as the chain.\*



- Never connect Maillon Rapide® Quick Links into lifting chain or to a chain hoist.



# STAINLESS STEEL – CERTIFIED

MAILLON RAPIDES®

When your **LIFE** depends on it!

**Certified For Permanent & Semi-Permanent Connections**



Agriculture



Industrial Supplies



Architecture



Military



Climbing & Mountaineering



Parachuting & Paragliding



Entertainment



Professional Fishing



Industrial



Sailing

# STAINLESS STEEL – COMMERCIAL

A HIGH QUALITY RANGE OF STAINLESS STEEL CHAIN, RIGGING COMPONENTS & GENERAL HARDWARE LINES FOR NON-CRITICAL APPLICATIONS.



# STAINLESS STEEL – COMMERCIAL

---

## STAINLESS STEEL-LIFTING & STAINLESS STEEL-COMMERCIAL


### What is the difference?

With the proliferation of stainless steel chain and fittings now available on the market, it can be daunting to establish which items are suitable for industrial lifting applications.

Many products are not suitable for lifting applications even though Safe Working Load, Working Load Limit, or Minimum Breaking Load figures may be indicated. They may even have test certificates available.

There are certain characteristics that will identify a product suitable for lifting applications. This guide is provided to help keep you safe through making informed purchasing decisions.

### Essential when sourcing stainless steel products for lifting applications

- A reputable product manufacturer.
- A supplier with lifting equipment knowledge and experience.
- Products that are marked with a Working Load Limit (WLL) or Safe Working Load (SWL).
- Additional identification markings on the product which clearly trace back to a manufacturer's test certificate.
- A copy of the manufacturer's test certificate is able to be supplied upon request.
- A supplier with the ability to tag certified lifting products and issue a corresponding Conformance Certificate.
- Cookes stainless steel products that are certified for lifting applications show a  in this section.

### Strongly recommended when sourcing stainless steel products for non-lifting applications where some loading will be applied

- A reputable product manufacturer.
- A supplier with the experience to assist in making the correct product choice.
- Manufacturer's test certificates are available on request to provide Minimum Breaking Load (MBL) information.
- A minimum 4:1 design factor from MWL (Maximum Working Load) to MBL (Minimum Breaking Load). \*Refer MWL explanation below.

- 
- MWL: Maximum Working Loads are for guidance only in selection of product with sufficient strength for intended application.



- Cookes stainless steel products that are not suitable for lifting applications, but carry Maximum Working Load (MWL) information, feature in the 'Stainless Steel-Commercial' section of this catalogue.

# STAINLESS STEEL – COMMERCIAL

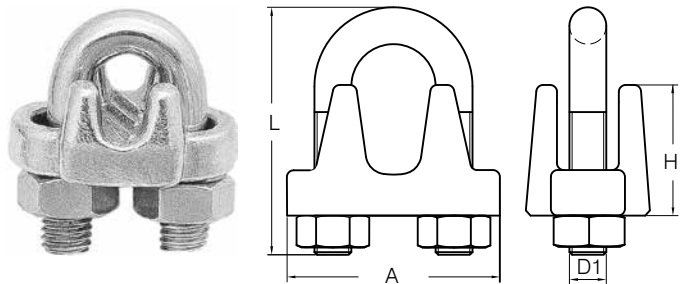
## WIRE ROPE GRIPS

### Stainless Steel Grips – American Style

Product Code	Suit Rope	Dimensions (inch)			
	Ømm	D1	A	H	L
09568303	3	M6	0.94	0.40	0.85
09568305	5	M6	1.14	0.50	1.20
09568306	6	M8	1.42	0.65	1.35
09568308	8	M10	1.69	0.72	1.75
09568310	10	M12	1.93	0.91	1.95
09568312	12	M12	2.28	1.15	2.45
09568316	16	M14	2.48	1.34	2.95

#### Stainless Steel Wire Rope Grips – American Style.

- Designed for light duty, non-load bearing applications.
- Grade AISI316 Stainless Steel.
- Polished finish.
- Manufactured in China.

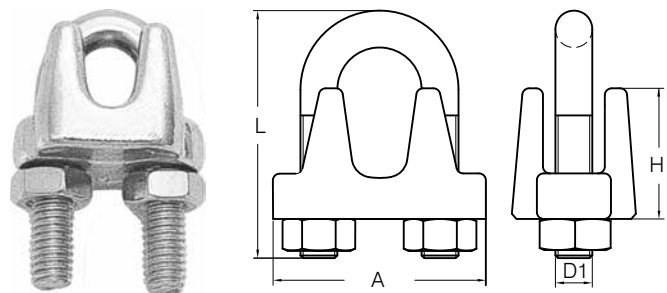


### Stainless Steel Wire Rope Grips – Japanese Style

Product Code	Suit Rope	Dimensions (mm)			
	Ømm	D1	A	H	L
09568304	4	M4	19	13	25
09568306L	6	M6	27	17	35.5

#### Stainless Steel Wire Rope Grips – Japanese Style.

- Designed for light duty, non-load bearing applications.
- Lighter pattern than the American style wire rope grips.
- Grade AISI316 Stainless Steel.
- Polished finish.
- Manufactured in China.



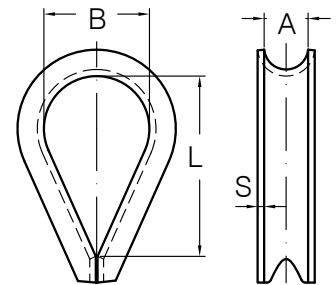
• Stainless Steel Wire Rope Grips must not be used for load bearing applications.

# STAINLESS STEEL – COMMERCIAL

## WIRE ROPE THIMBLES

Heavy Duty Stainless Steel – U.S. Pattern

Product Code	Suit Rope	Dimensions (mm)			
	Ømm	A	B	L	S
02106603	3	3.5	17.5	33.0	1.2
02106605	5	6.0	19.0	35.5	1.5
02106606	6	7.0	22.0	41.0	2.0
02106608	8	8.5	27.0	48.0	2.0
02106610	10	10.5	29.0	54.0	3.0
02106612	12	13.5	38.0	70.0	3.5
02106616	16	17.0	44.5	82.5	4.0
02106620	20	20.0	51.0	95.0	6.1
02106622	22	24.0	57.0	108.0	6.1
02106625	25	27.0	63.5	114.0	6.1
02106632	32	36.5	89.0	167.0	8.9



These heavy pattern stainless steel thimbles are recommended for use with steel wire rope.

- 3mm manufactured from AISI304 Stainless Steel.
- 5mm & larger manufactured from AISI316 Stainless Steel.
- Grade AISI316 Stainless Steel.
- Polished finish.
- Manufactured in China.



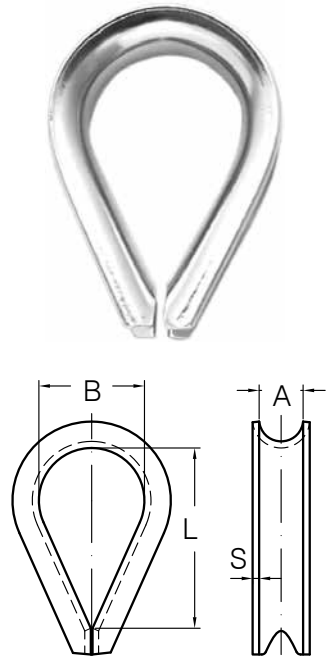
The heavy pattern makes these thimbles suitable for use with stainless steel wire ropes and cordage.

# STAINLESS STEEL – COMMERCIAL

## LIGHT DUTY THIMBLES

Light Duty Stainless Steel – European Pattern

Product Code	Suit Rope	Dimensions (mm)			
	Ømm	A	B	L	S
02106720	2	2.0	7	12	1.0
02106725	2.5	2.5	8	14	1.0
02106730	3	3.0	10	17	1.0
02106740	4	4.0	11	18	1.0
02106750	5	5.6	13	20	1.2
02106760	6	6.5	15	26	1.2
02106780	8	9.0	18	33	1.5
02106800	10	11.0	23	43	2.0
02106820	12	14.0	27	48	2.0
02106822	14	15.0	34	53	2.5
02106825	16	17.0	38	57	3.0
02106865	18	19.0	40	67	3.0
02106900	20	22.0	45	75	4.0
02106925	24	26.0	56	96	5.0



Light pattern thimble suitable for general purpose applications.

Light Duty Stainless Steel Thimbles are perfect for forming eyelets in small diameter cordage, or for any non-load bearing application where a smaller thimble is preferred.

- AISI316 Stainless Steel.
- Polished finish.
- Manufactured in China.



• The European pattern stainless steel thimbles are lighter and smaller than the U.S. pattern thimbles and are popular for forming eyelets in non-load bearing cordage.

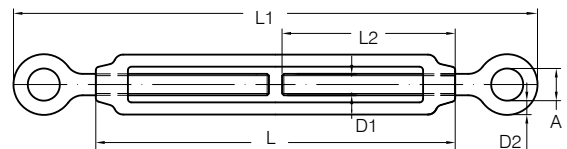
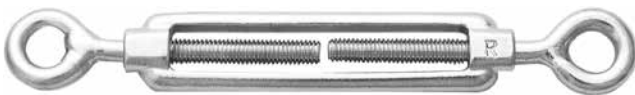
# STAINLESS STEEL – COMMERCIAL

## TURNBUCKLES

### Turnbuckles – Eye & Eye

Product Code	Size	MWL*	Dimensions (mm)				
	D1		L	L1	A	D2	L2
09568505	M5	140	70	115	8	4.4	33
09568506	M6	204	90	145	10	5.3	42
09568508	M8	388	120	195	14	7.1	56
09568510	M10	561	150	240	16	8.9	70
09568512	M12	804	200	310	18	10.8	95
09568513	M16	1,482	250	390	26	14.6	117

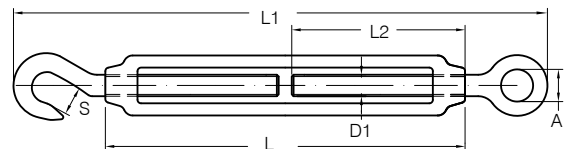
- AISI316 Stainless Steel material.
- Polished finish.
- Design factor 4:1 MWL to MBL.
- Manufactured in China.



### Turnbuckles – Hook & Eye

Product Code	Size	MWL*	Dimensions (mm)				
	D1		L	L1	A	S	L2
09568516	M6	69	90	145	10	9	42
09568518	M8	125	120	195	14	12	56
09568520	M10	194	150	240	16	12	70
09568521	M12	288	200	310	18	14	95

- AISI316 Stainless Steel material.
- Polished finish.
- Design factor 4:1 MWL to MBL.
- Manufactured in China.



• MWL: Maximum Working Load (MWL) is shown only to provide guidance in selecting a turnbuckle with sufficient strength for the intended application.



• Not suitable for lifting applications.

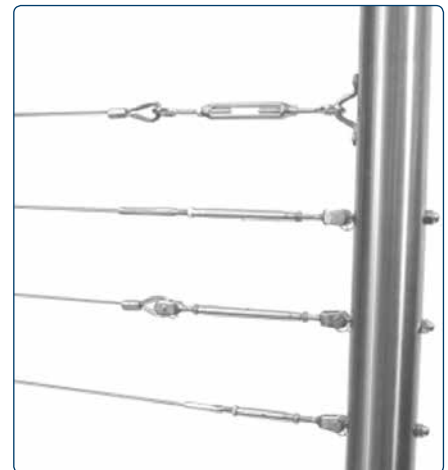
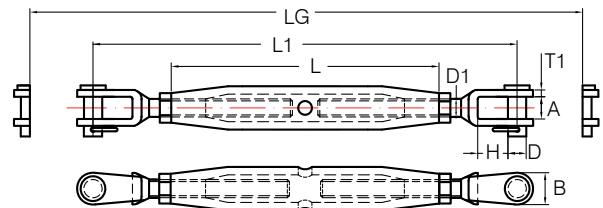
# STAINLESS STEEL – COMMERCIAL

## RIGGING SCREWS

### Rigging Screws – Jaw & Jaw

Product Code	Size	MWL*	Dimensions (mm)							
	D1	kg	L	L1	A	D	H	LG	B	T1
09568545	M5	143	80	130	6.5	5	10	190	13.0	3
09568546	M6	196	95	150	7.5	6	10	220	14.0	3
09568548	M8	355	105	165	11.0	8	11	240	18.5	3
09568550	M10	556	125	190	12.0	9	14	280	21.0	4
09568552	M12	816	150	245	14.0	12	20	360	26.0	5
09568556	M16	1,454	190	310	17.0	16	26	450	36.0	6
09568560	M20	2,270	210	360	20.0	19	30	510	45.5	6

- AISI316 Stainless Steel material.
- Polished finish.
- Design factor 4:1 MWL to MBL.
- Manufactured in China.



Closed Body Stainless Steel Rigging Screws in AISI316 material are suitable for marine applications or modern balustrade designs.

- MWL: Maximum Working Load (MWL) is shown only to provide guidance in selecting a rigging screw with sufficient strength for the intended application.



• Not suitable for lifting applications.



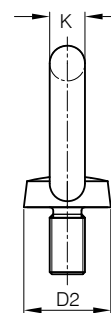
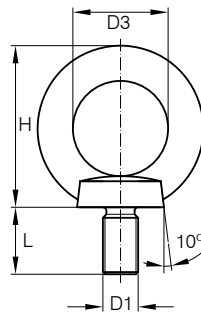
# STAINLESS STEEL – COMMERCIAL

## EYE BOLTS

### Collared Eye Bolts – Metric Thread

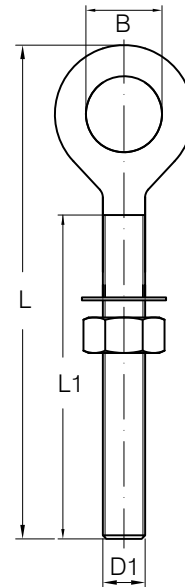
Product Code	Size	MWL*	Dimensions (mm)				
	D1		D2	D3	H	L	K
09568580	M6	70	16	16	28.0	11.0	6
09568581	M8	140	20	20	33.0	13.0	8
09568582	M10	230	25	25	42.0	17.0	10
09568583	M12	340	30	30	51.0	20.5	12
09568584	M16	700	35	35	60.0	27.0	14
09568585	M20	1,200	40	40	68.8	30.0	16

- DIN580 pattern.
- AISI316 Stainless Steel.
- Polished finish.
- Design factor 4:1 MWL to MBL.
- Manufactured in China.



### Long Shank, Non-Collared Eye Bolts – Metric Thread

Product Code	Size	MWL*	Dimensions (mm)		
	D1		L	L1	B
09568716	M6	209	100	74	13
09568718	M8	370	130	92	16
09568720	M10	574	150	90	22



Supplied complete with nut and washer.

- AISI316 Stainless Steel.
- Polished finish.
- Design factor 4:1 MWL to MBL.
- Manufactured in China.

• MWL: Maximum Working Load (MWL) is shown only to provide guidance in selecting an eye bolt with sufficient strength for the intended application.



• Not suitable for lifting applications.

# STAINLESS STEEL – COMMERCIAL

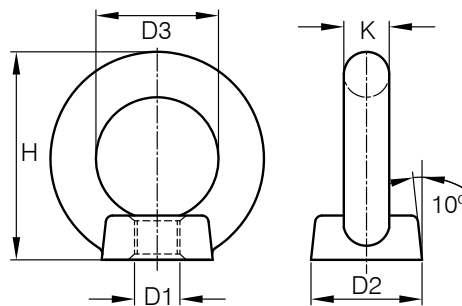
## EYE NUTS

### Stainless Steel Shouldered Eye Nuts – Metric Thread

Product Code	MWL*	Thread (D1)	Dimensions (mm)			
	kg		D2	D3	H	K
09568590	70	M6	16	16	28.0	6
09568591	140	M8	20	20	33.0	8
09568592	230	M10	25	25	42.0	10
09568593	340	M12	30	30	51.0	12
09568594	700	M16	35	35	60.0	14
09568595	1,200	M20	40	40	68.8	16

A stainless steel eye nut for general purpose applications.

- AISI316 Stainless Steel.
- Polished finish.
- Design factor 4:1 MWL to MBL.
- Manufactured in China.



• MWL: Maximum Working Load (MWL) is shown only to provide guidance in selecting an eye nut with sufficient strength for the intended application.



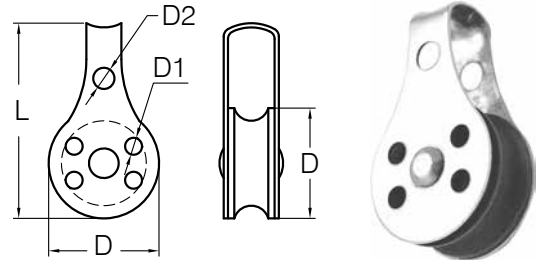
• Not suitable for lifting applications.

# STAINLESS STEEL – COMMERCIAL

## PULLEYS

### Light Duty Single Pulleys – with Fixed Eye

Product Code	Suit Rope	Dimensions (mm)			
	Ømm	L	D	D1	D2
09568725LD	4 – 6	46	26	4	5



A light weight stainless steel pulley with nylon sheave.

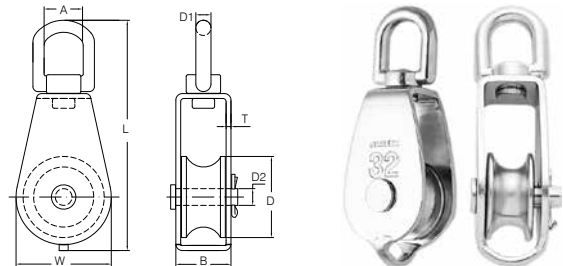
- Bracket style head fitting.
- AISI304 Stainless Steel Body.
- Polished finish.
- Manufactured in China.

### Single Pulleys – with Swivel Eye

Product Code	Size (mm)	MWL*	Suit Rope	Dimensions (mm)						
	D	kg	Ømm	L	A	D1	D2	W	B	T
09568725	25	311	4 – 6	83	15	6	8	30	22	3
09568732	32	342	6 – 8	97	16	6	8	36	22	3
09568750	50	487	8 – 10	127	20	8	10	54	27	3

- AISI316 Stainless Steel material including sheave.
- Polished finish.
- Design factor 4:1 MWL to MBL.
- Manufactured in China.

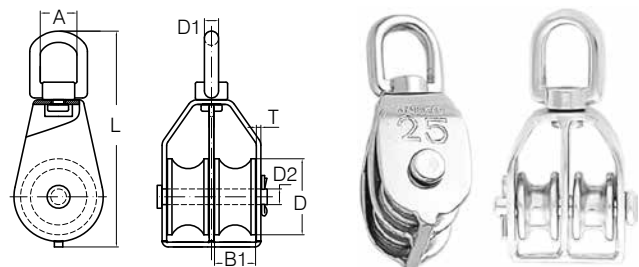
Sizes match to double pulley version below.



### Double Pulleys – with Swivel Eye

Product Code	Size (mm)	MWL*	Suit Rope	Dimensions (mm)					
	D	kg	Ømm	L	A	D1	D2	B1	T
09568726	25	311	4 – 6	83	15	6	8	15	3
09568733	32	342	6 – 8	97	16	6	8	15	3
09568751	50	487	8 – 10	127	20	8	10	18	3

- AISI316 Stainless Steel material including sheave.
- Polished finish.
- Design factor 4:1 MWL to MBL.
- Manufactured in China.



• MWL: Maximum Working Load (MWL) is shown only to provide guidance in selecting a pulley with sufficient strength for the intended application.



• Not suitable for lifting applications.

# STAINLESS STEEL – COMMERCIAL

## CHAIN & QUICK LINKS

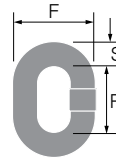
### Stainless Steel Regular Link Chain

Product Code	MWL*	Dimensions (mm)		
	kg	S	R	F
02624002	30	2.0	12	7.5
02624003	60	3.0	16	11.0
02624004	100	4.0	19	15.0
02624005	175	5.0	22	19.0
02624006	300	6.0	27	22.5
02624008	500	8.0	32	30.0
02624010	750	10.0	41	38.0



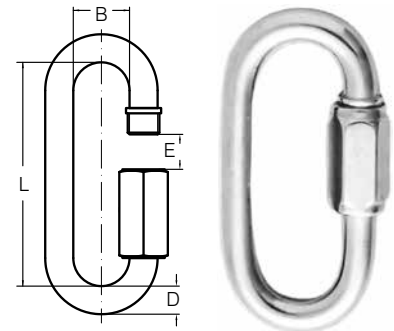
General purpose chain with link dimensions that allow use in numerous applications.

- AISI316 Stainless Steel.
- Polished finish.
- Manufactured in China.



### Stainless Steel Quick Links

Product Code	Size (mm)	MWL*	Dimensions (mm)		
	D		L	B	E
09569460	6	288	45	14.5	7.5
09569480	8	513	58	17.5	10.0
09569500	10	801	72	21.0	12.0



- AISI316 Stainless Steel material.
- Polished finish.
- Design factor 4:1 MWL to MBL.
- Manufactured in China.

• MWL: Maximum Working Load (MWL) is shown only to provide guidance in selecting a chain or Quick Link with sufficient strength for the intended application.



Quick Links provide a quick and easy means of re-joining broken non-load bearing chains. They may also be used for joining non-load bearing ropes with fitted eyes, connecting rings to chains or ropes, etc. Where Quick Links are required for safety critical applications refer Maillon Rapides on page 549.



• Not suitable for lifting applications!

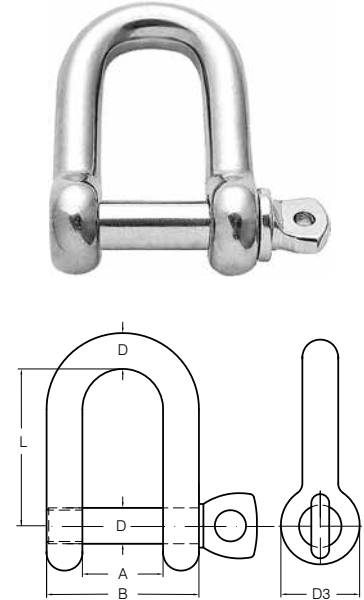
# STAINLESS STEEL – COMMERCIAL

## SHACKLES

### Forged Dee Shackles – Screw Pin

Product Code	MWL*	Dimensions (mm)			
	kg	D	A	B	L
09568405	232	5	10	20	20
09568406	337	6	12	24	24
09568408	605	8	16	32	32
09568410	952	10	20	40	40
09568412	1,401	12	24	48	48
09568416	2,492	16	32	64	64
09568420	3,472	19	38	76	76
09568422	4,712	22	44	88	88
09568425	5,709	25	50	100	100

- AISI316 Stainless Steel material.
- Polished finish.
- Design factor 4:1 MWL to MBL.
- Manufactured in China.

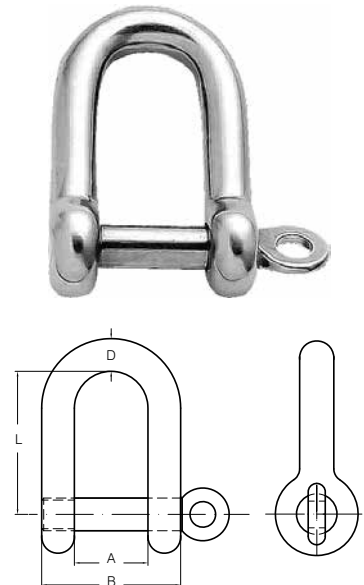


### Forged Dee Shackles – Captive Screw Pin

Product Code	MWL*	Dimensions (mm)			
	kg	D	A	B	L
09568485	232	5	10	20	20
09568486	337	6	12	24	24
09568488	605	8	16	32	32
09568490	952	10	20	40	40
09568492	1,401	12	24	48	48

Captive Screw Pin ensures pin stays engaged and cannot be lost.

- AISI316 Stainless Steel material.
- Polished finish.
- Design factor 4:1 MWL to MBL.
- Manufactured in China.



\* MWL: Maximum Working Load (MWL) is shown only to provide guidance in selecting a shackle with sufficient strength for the intended application.



• Commercial Grade Stainless Steel Shackles must not be used for lifting applications.  
• Stainless Steel Shackles suitable for lifting applications are detailed on page 546.

# STAINLESS STEEL – COMMERCIAL

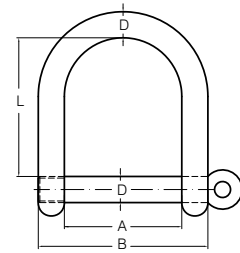
## SHACKLES

### Wide Body Forged Dee Shackles – Captive Screw Pin

Product Code	MWL*	Dimensions (mm)			
	kg	D	A	L	R
09568465	232	5	25	22	35
09568466	337	6	24	33	36
09568468	605	8	28	32	44
09568470	952	10	40	55	60
09568472	1,401	12	50	66	74

Captive Screw Pin ensures pin stays engaged and cannot be lost.

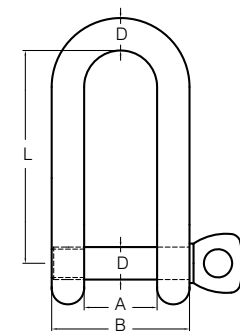
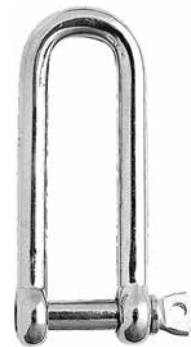
- AISI316 Stainless Steel material.
- Polished finish.
- Design factor 4:1 MWL to MBL.
- Manufactured in China.




### Long Body Forged Dee Shackles – Screw Pin

Product Code	MWL*	Dimensions (mm)			
	kg	D	A	B	L
09568475	232	5	10	20	40
09568476	337	6	12	24	48
09568478	605	8	16	32	64
09568480	952	10	20	40	80
09568482	1,401	12	24	48	96

- AISI316 Stainless Steel material.
- Polished finish.
- Design factor 4:1 MWL to MBL.
- Manufactured in China.



• MWL: Maximum Working Load (MWL) is shown only to provide guidance in selecting a shackle with sufficient strength for the intended application.

 • Commercial Grade Stainless Steel Shackles must not be used for lifting applications.  
• Stainless Steel Shackles suitable for lifting applications are detailed on page 546.

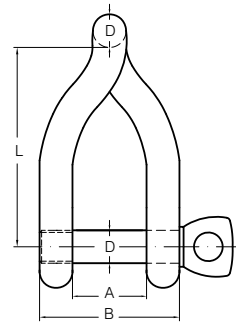
# STAINLESS STEEL – COMMERCIAL

## SHACKLES

### Twisted Body Forged Shackles – Screw Pin

Product Code	MWL*	Dimensions (mm)			
	kg	D	A	B	L
09568427	232	5	10	20	30
09568428	337	6	12	24	36
09568429	605	8	16	32	48
09568430	952	10	20	40	60
09568431	1,401	12	24	48	72

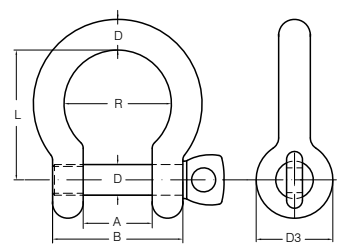
- AISI316 Stainless Steel material.
- Polished finish.
- Design factor 4:1 MWL to MBL.
- Manufactured in China.



### Forged Bow Shackles – Screw Pin

Product Code	MWL*	Dimensions (mm)			
	kg	D	A	L	R
09568445	232	5	10	20	17
09568446	337	6	12	24	21
09568448	605	8	16	32	28
09568450	952	10	20	40	35
09568452	1,401	12	24	48	42

- AISI316 Stainless Steel material.
- Polished finish.
- Design factor 4:1 MWL to MBL.
- Manufactured in China.



• MWL: Maximum Working Load (MWL) is shown only to provide guidance in selecting a shackle with sufficient strength for the intended application.



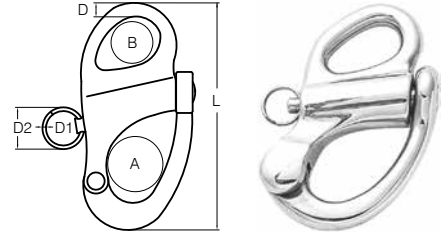
• Commercial Grade Stainless Steel Shackles must not be used for lifting applications.  
• Stainless Steel Bow Shackles suitable for lifting applications are detailed on page 547.

# STAINLESS STEEL – COMMERCIAL

## SNAP SHACKLES

### Fixed Eye Snap Shackle

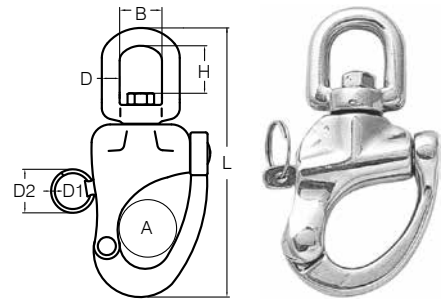
Product Code	Size (mm)	MWL* kg	Dimensions (mm)				
	L		A	B	D	D1	D2
09568881	52	324	13	9	5.0	1.5	14
09568883	70	449	16	12	5.5	1.5	18
09568885	96	832	22	16	8.5	1.5	20



- AISI316 Stainless Steel material.
- Polished finish.
- Design factor 4:1 MWL to MBL.
- Manufactured in China.

### Swivel Eye Snap Shackle

Product Code	Size (mm)	MWL* kg	Dimensions (mm)					
	L		A	B	D	D1	D2	H
09568887	70	163	13	12	5.0	1.5	14	13
09568888	87	224	16	16	6.0	1.5	18	15
09568889	124	416	22	23	8.5	1.5	20	23



- AISI316 Stainless Steel material.
- Polished finish.
- Design factor 4:1 MWL to MBL.
- Manufactured in China.

• MWL: Maximum Working Load (MWL) is shown only to provide guidance in selecting a snap shackle with sufficient strength for the intended application.



• Not suitable for lifting applications.

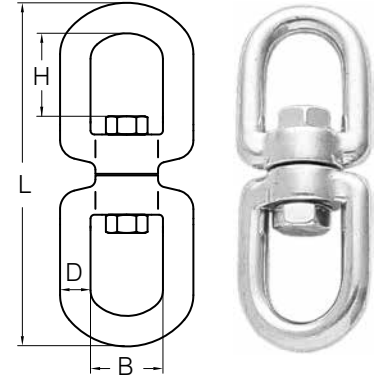


# STAINLESS STEEL – COMMERCIAL

## SWIVELS

### Swivels – Eye & Eye

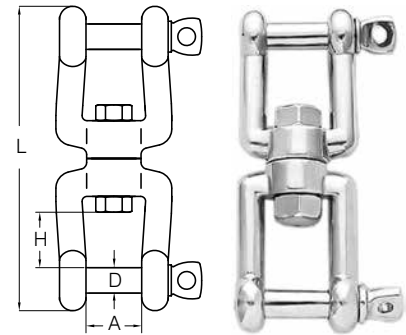
Product Code	Size (mm)	MWL*	Dimensions (mm)		
	D		L	H	B
09568605	5	163	60	13	13
09568606	6	235	65	15	15
09568608	8	416	90	21	20
09568610	10	648	115	27	24
09568613	13	934	154	35	32
09568614	16	1,661	188	42	39



- AISI316 Stainless Steel material.
- Polished finish.
- Design factor 4:1 MWL to MBL.
- Manufactured in China.

### Swivels – Jaw & Jaw

Product Code	Size (mm)	MWL*	Dimensions (mm)		
	D		L	H	A
09568616	6	235	64	12	12
09568618	8	416	89	16	16
09568620	10	648	112	22	20
09568621	13	934	154	28	26
09568622	16	1,661	185	37	32



- AISI316 Stainless Steel material.
- Polished finish.
- Design factor 4:1 MWL to MBL.
- Manufactured in China.

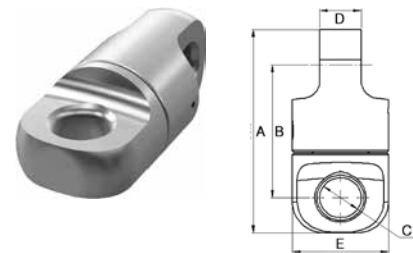
### Midget Stainless Steel Swivels – Eye & Eye



Product Code	MWL*	Proof Load	Dimensions (mm)					Approx. Weight
	t		t	A	B	C	D	Ø E
07250010	0.5	1.0	66.5	43.5	13	13	30	0.21

Fully machines 316 Stainless Steel construction for maximum corrosion resistance. Fully ball raced for smooth swivel action and long service life.

- Compact and durable design. Greaseable.
- Eyes will accept shackles. 5:1 design factor.
- Proof loaded to two times MWL.
- Manufactured in New Zealand.



- MWL: Maximum Working Load (MWL) is shown only to provide guidance in selecting a swivel with sufficient strength for the intended application.



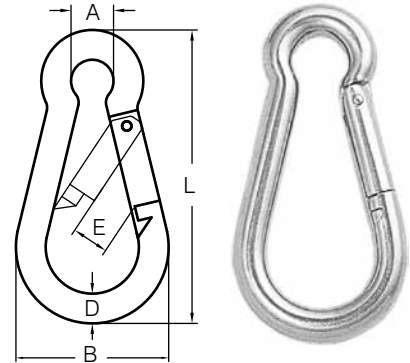
• Not suitable for lifting applications!

# STAINLESS STEEL – COMMERCIAL

## KARABINERS

### Karabiners – without Eyelet

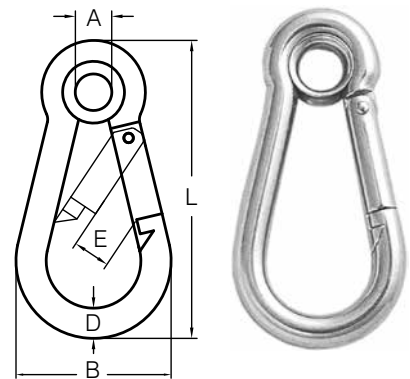
Product Code	Size (mm)	MWL*	Dimensions (mm)			
	D		L	A	E	B
09569040	4	59	40	6.5	5.5	20
09569050	5	87	50	8.0	6.5	25
09569060	6	130	60	9.0	7.5	30
09569080	8	199	80	12.0	9.0	40
09569100	10	301	100	15.0	12.0	50
09569120	12	421	140	20.0	19.0	67



- AISI316 Stainless Steel material.
- Polished finish.
- Design factor 4:1 MWL to MBL.
- Manufactured in China.

### Karabiners – with Eyelet

Product Code	Size (mm)	MWL*	Dimensions (mm)			
	D		L	A	E	B
09569140	4	59	40	4.5	5.5	20
09569150	5	87	50	6.0	6.5	25
09569160	6	130	60	7.0	7.5	30
09569180	8	199	80	10.0	9.0	40
09569200	10	301	100	13.0	12.0	50
09569240	11	355	120	14.5	16.0	57



- AISI316 Stainless Steel material.
- Polished finish.
- Design factor 4:1 MWL to MBL.
- Manufactured in China.

• MWL: Maximum Working Load (MWL) is shown only to provide guidance in selecting a karabiner with sufficient strength for the intended application.



• **Not suitable for lifting applications.**  
 • **For safety critical applications only use suitable rated karabiners. Contact your local Cookes branch, Freephone 0508 274 366 or email [customerservices@bridoncookes.co.nz](mailto:customerservices@bridoncookes.co.nz) for information on our height safety karabiner range or refer Maillon Rapides on page 549.**

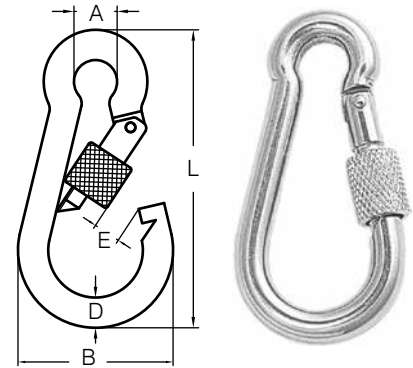
# STAINLESS STEEL – COMMERCIAL

## KARABINERS

### Screwgate Karabiners – without Eyelet

Product Code	Size (mm)	MWL* kg	Dimensions (mm)			
	D		L	A	E	B
09569272	6	130	60	9	6.5	30
09569276	8	199	80	12	8.5	40
09569280	10	301	100	15	11.0	50

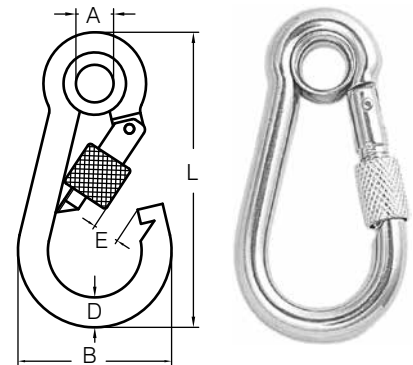
- AISI316 Stainless Steel material.
- Polished finish.
- Design factor 4:1 MWL to MBL.
- Manufactured in China.



### Screwgate Karabiners – with Eyelet

Product Code	Size (mm)	MWL* kg	Dimensions (mm)			
	D		L	A	E	B
09569291	5	87	50	6	5.5	25
09569292	6	130	60	7	6.5	30
09569294	8	199	80	10	8.5	40
09569296	10	301	100	13	11.0	50

- AISI316 Stainless Steel material.
- Polished finish.
- Design factor 4:1 MWL to MBL.
- Manufactured in China.



• MWL: Maximum Working Load (MWL) is shown only to provide guidance in selecting a karabiner with sufficient strength for the intended application.



- Not suitable for lifting applications.
- For safety critical applications only use suitable rated karabiners. Contact your local Cookes branch, Freephone 0508 274 366 or email [customerservices@bridoncookes.co.nz](mailto:customerservices@bridoncookes.co.nz) for information on our height safety karabiner range or refer Maillon Rapides on page 549.

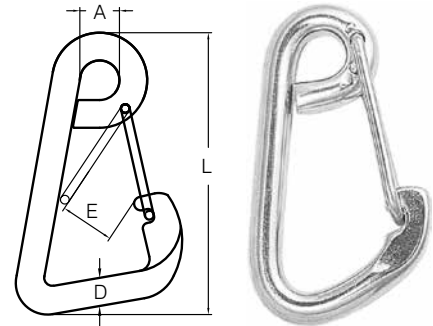
# STAINLESS STEEL – COMMERCIAL

## SNAP HOOKS

### Spring Snap Hooks – Model S-2430

Product Code	Size (mm)	MWL* kg	Dimensions (mm)		
	D		L	A	E
09569346	6	130	60	10	10
09569348	8	199	80	12	16
09569350	10	301	100	16	19
09569352	12	421	120	19	25

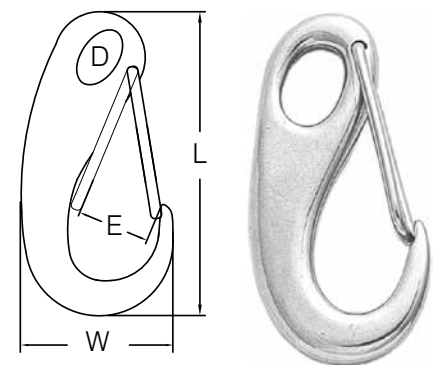
- AISI316 Stainless Steel material.
- Polished finish.
- Design factor 4:1 MWL to MBL.
- Manufactured in China.



### Spring Snap Hooks – Model S-2470

Product Code	Size (mm)	MWL* kg	Dimensions (mm)		
	L		W	D	E
09568768	50	66	24	7.5	10
09568770	70	133	31	10	13
09568800	100	245	46	15	20

- AISI316 Stainless Steel material.
- Polished finish.
- Design factor 4:1 MWL to MBL.
- Manufactured in China.



• MWL: Maximum Working Load (MWL) is shown only to provide guidance in selecting a snap hook with sufficient strength for the intended application.



• Not suitable for lifting applications.

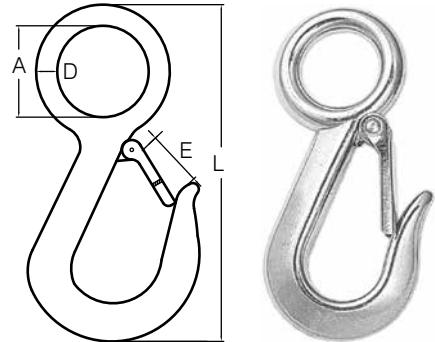
# STAINLESS STEEL – COMMERCIAL

## EYE HOOKS

### Large Eye Hooks – with Safety Latch

Product Code	Size (mm)	MWL* kg	Dimensions (mm)		
	A		D	L	E
09564510	19	237	7.5	100	15
09564512	28	360	9.0	120	18

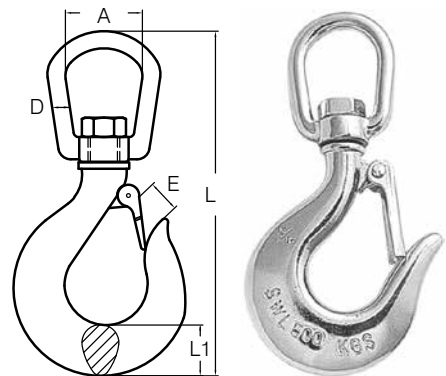
- AISI316 Stainless Steel material.
- Polished finish.
- Design factor 4:1 MWL to MBL.
- Manufactured in China.



### Swivel Eye Hooks – with Safety Latch

Product Code	Size (mm)	MWL* kg	Approx. Dimensions (mm)			
	D		A	E	L	L1
09568634	6	350	21.0	15	122	21
09568635	8	650	27.5	20	142	25
09568636	10	1,000	27.5	20	170	30
09568637	12	1,500	32.0	25	200	30

- AISI316 Stainless Steel material.
- Polished finish.
- Design factor 4:1 MWL to MBL.
- Manufactured in China.



\* MWL: Maximum Working Load (MWL) is shown only to provide guidance in selecting an eye-hook with sufficient strength for the intended application.



• Not suitable for lifting applications.

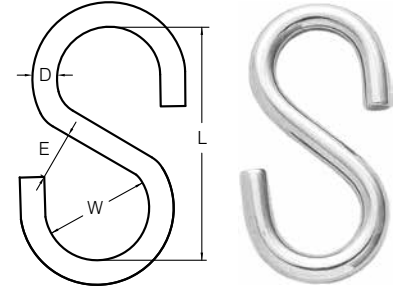
# STAINLESS STEEL – COMMERCIAL

## S-HOOKS

### S-Hooks

Product Code	Size (mm)	MWL*	Dimensions (mm)		
	D		L	W	E
09564309	8	158	64	24	12

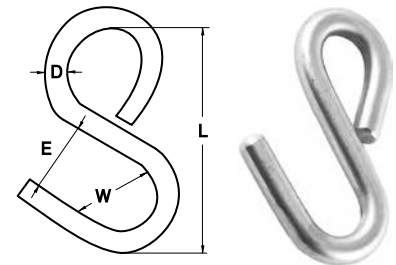
- AISI316 Stainless Steel material.
- Polished finish.
- Design factor 4:1 MWL to MBL.
- Manufactured in China.



### Bull Nose S-Hooks

Product Code	Size (mm)	MWL*	Dimensions (mm)		
	D		L	W	E
09564303	9.5	250	70	21	23.5

- AISI316 Stainless Steel material.
- Machined 'Bull Nose' one end.
- Design factor 4:1 MWL to MBL.
- Manufactured in New Zealand.



- MWL: Maximum Working Load (MWL) is shown only to provide guidance in selecting an s-hook with sufficient strength for the intended application.



Cookes can fabricate boat winch ropes or straps using the hooks detailed in this catalogue.

Contact your local Cookes branch, Freephone 0508 274 366 or email [customerservices@bridoncookes.co.nz](mailto:customerservices@bridoncookes.co.nz) for further information.



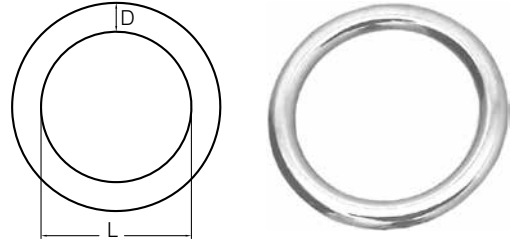
• Not suitable for lifting applications.

# STAINLESS STEEL – COMMERCIAL

## ROUND RINGS & DEE RINGS

### Round Ring – Welded

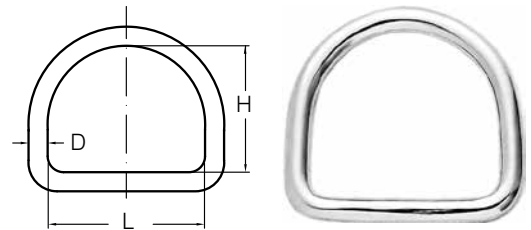
Product Code	MWL*	Dimensions (mm)	
	kg	Ø Material (D)	Ø Inside (L)
09564785	122	5	30
09564789	179	6	40
09564795	316	8	50



- AISI316 Stainless Steel material.
- Polished finish.
- Design factor 4:1 MWL to MBL.
- Manufactured in China.

### Dee Ring – Welded

Product Code	MWL*	Dimensions (mm)		
	kg	Ø Material (D)	Ø Inside (L)	Ø Inside (H)
09564801	122	5	25	22
09564802	179	6	40	37
09564803	316	8	50	47



- AISI316 Stainless Steel material.
- Polished finish.
- Design factor 4:1 MWL to MBL.
- Manufactured in China.

• MWL: Maximum Working Load (MWL) is shown only to provide guidance in selecting a ring with sufficient strength for the intended application.



#### Dee Rings

Their flat edge makes Dee Rings perfect for sewing to light duty non-load bearing straps. Cookes can fabricate webbing straps to your requirements.



- Not suitable for lifting applications!
- Commercial Grade Stainless Steel Rings must not be used for lifting applications. Stainless Steel Master Links suitable for lifting applications may be found on page 540.

