





# LIFTING POINTS & EYE BOLTS

|   |            |
|---|------------|
| <b>Introduction</b> .....                   | <b>264</b> |
| <b>Lifting &amp; Lashing Points</b> .....   | <b>265</b> |
| <b>RUD Weld-On</b> .....                    | <b>265</b> |
| RUD Stainless Weld-On .....                 | <b>272</b> |
| <b>RUD Bolt-On</b> .....                    | <b>273</b> |
| <b>Eye Bolts</b> .....                      | <b>291</b> |
| RUD Starpoint Eye Bolts .....               | <b>291</b> |
| RUD Stainless Steel Eye Bolts .....         | <b>294</b> |
| BS4278 Collared Eye Bolts .....             | <b>295</b> |
| Dynamo Eye Bolts .....                      | <b>299</b> |
| Certified Stainless Steel Eye Bolts .....   | <b>299</b> |
| Shoulder Eye Bolts .....                    | <b>300</b> |
| Uncertified Stainless Steel Eye Bolts ..... | <b>301</b> |
| <b>Eye Nuts</b> .....                       | <b>302</b> |
| RUD Starpoint Eye Nuts .....                | <b>302</b> |
| DIN582 Collared Eye Nuts .....              | <b>304</b> |
| Stainless Steel Eye Nuts .....              | <b>305</b> |
| <b>Ferry Lashing Rings</b> .....            | <b>306</b> |

# INTRODUCTION

Cookes is proud to be the authorised New Zealand distributor for RUD Lifting and Lashing Points.



Do not be fooled by the many low quality imitations on the market today. Where safety is foremost there is only one choice, and that's RUD.

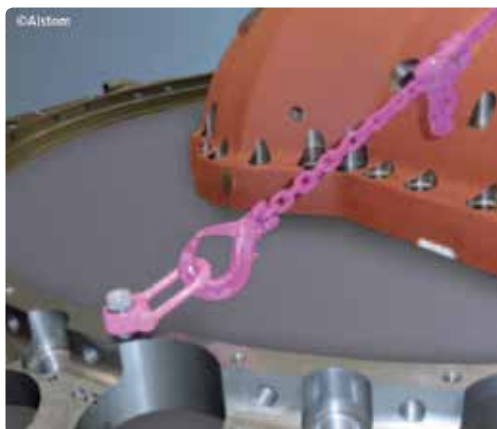
RUD Lifting and Lashing Points are manufactured to fully conform to EN1677. No further proof testing in the field is required.

With their headquarters and manufacturing plant in Germany, RUD's continuous research and development programmes have enabled them to remain at the forefront of lifting and lashing point product development.

RUD – highest quality and ongoing technical innovation.

08

LIFTING POINTS  
& EYE BOLTS



**INSIST ON  
APPROVED  
LIFTING  
POINTS  
FROM  
RUD**

**COOKES** – helping lift New Zealand business for over 100 years!  
a BRIDON · BEKAERT Ropes Group Brand

# LIFTING & LASHING POINTS

## RUD WELD-ON

### Load Rings – ABA

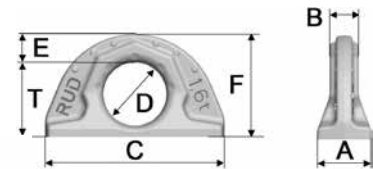


| Product Code | RUD Item No. | WLL  | Dimensions (mm) |    |     |     |      |     |      | Net Weight |
|--------------|--------------|------|-----------------|----|-----|-----|------|-----|------|------------|
|              |              | t    | A               | B  | C   | D   | E    | F   | T    | kg         |
| 09104161     | ABA 1.6      | 1.6  | 30              | 16 | 100 | 35  | 16   | 57  | 41.5 | 0.44       |
| 09104163     | ABA 3.2      | 3.2  | 41              | 23 | 137 | 50  | 21   | 80  | 59   | 1.1        |
| 09104165     | ABA 5        | 5.0  | 51              | 27 | 172 | 60  | 27.5 | 99  | 71.5 | 2.3        |
| 09104169     | ABA 10       | 10.0 | 70              | 38 | 228 | 80  | 35   | 130 | 95   | 5.3        |
| 09104175*    | ABA 20       | 20.0 | 90              | 52 | 272 | 115 | 40   | 175 | 135  | 10.7       |
| 09104180*    | ABA 31.5     | 31.5 | 108             | 64 | 320 | 130 | 50   | 204 | 154  | 18.3       |

\* Available on indent.

The new ABA weld-on lifting point from RUD is the safer alternative which enables the user to take the guess work out of lifting safely.

- Manufactured from high tensile CrNiMo – steel.
- Full working load in all directions.
- 100% Electro-magnetic crack detection tested.
- Patented wear markings on the inside and on the outside.
- 4 :1 design factor on Working Load Limit.
- Complies with DIN 5691 and EN1677.
- Temperature Range -40°C to 100°C no reduction in WLL.
- No sharp edges, phosphated surface.
- Manufactured in Germany.



### ABA Working Load Limits – G in Tonnes

| Lifting Mode |              | Single Leg |      | 2, 3 or 4 Legs |       |      |
|--------------|--------------|------------|------|----------------|-------|------|
|              |              |            |      |                |       |      |
| Product Code | RUD Item No. |            |      | 60°            | α 90° | 120° |
| 09104161     | ABA 1.6      | 1.6        | 1.6  | 2.8            | 2.2   | 1.6  |
| 09104163     | ABA 3.2      | 3.2        | 3.2  | 5.5            | 4.5   | 3.2  |
| 09104165     | ABA 5        | 5.0        | 5.0  | 8.6            | 7.0   | 5.0  |
| 09104169     | ABA 10       | 10.0       | 10.0 | 17.3           | 14.1  | 10.0 |
| 09104175     | ABA 20       | 20.0       | 20.0 | 34.6           | 28.2  | 20.0 |
| 09104180     | ABA 31.5     | 31.5       | 31.5 | 54.5           | 44.4  | 31.5 |



• Welding instructions supplied.  
• CAD drawings available upon request.

**Loading from any side is permitted.**

• Never exceed Manufacturer's Working Load Limit (WLL).  
• Always inspect lifting points carefully before each use!

08  
LIFTING POINTS  
& EYE BOLTS

# LIFTING & LASHING POINTS

## RUD WELD-ON

### Load Rings – VLBS

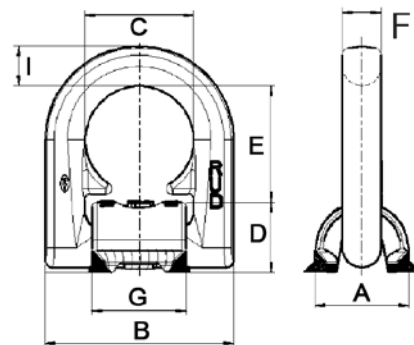


| Product Code | RUD Item No. | WLL<br>t | Dimensions (mm) |     |     |    |     |      |    |      | Net Weight<br>kg |
|--------------|--------------|----------|-----------------|-----|-----|----|-----|------|----|------|------------------|
|              |              |          | A               | B   | C   | D  | E   | Ø F  | G  | I    |                  |
| 09104101N    | VLBS 1.5     | 1.5      | 32              | 66  | 38  | 25 | 40  | 13.5 | 33 | 14   | 0.35             |
| 09104102N    | VLBS 2.5     | 2.5      | 36              | 77  | 45  | 27 | 48  | 13.5 | 40 | 16   | 0.50             |
| 09104104N    | VLBS 4       | 4.0      | 42              | 87  | 51  | 31 | 52  | 16.5 | 46 | 18   | 0.80             |
| 09104106N    | VLBS 6.7     | 6.7      | 61              | 115 | 67  | 44 | 73  | 22.5 | 60 | 24   | 1.90             |
| 09104110N    | VLBS 10      | 10.0     | 75              | 129 | 67  | 55 | 71  | 26.5 | 60 | 26.5 | 2.90             |
| 09104116N *  | VLBS 16 *    | 16.0     | 95              | 190 | 100 | 69 | 105 | 26.0 | 90 | 40   | 6.80             |

\* Without spring.

The VLBS Load ring offers a functional, compact innovative design. The rings are 100% electro-magnetic crack tested and painted in the unique durable RUD pink powder coated finish.

- Manufactured from high tensile CrNiMo – steel.
- Offers a full WLL in any direction with 180° rotation.
- Rated capacity can be increased 100% in lashing applications.
- Internal position holding springs.
- Complies with EN1677.
- Test certificates available, with full traceability on Load Rings.
- 100% electro-magnetic crack detection tested.
- Mounting blocks fully prepared for welding including distance lugs.
- Manufactured in Germany.



08

LIFTING POINTS & EYE BOLTS



Distance lugs for root weld.



### VLBS Working Load Limits – G in Tonnes

| Lifting Mode |              | Single Leg |      | 2, 3 or 4 Legs |      |      |
|--------------|--------------|------------|------|----------------|------|------|
|              |              |            |      |                | 60°  | 90°  |
| Product Code | RUD Item No. | G          | G    | G              |      |      |
| 09104101N    | VLBS 1.5     | 1.5        | 1.5  | 2.6            | 2.1  | 1.5  |
| 09104102N    | VLBS 2.5     | 2.5        | 2.5  | 4.3            | 3.5  | 2.5  |
| 09104104N    | VLBS 4       | 4.0        | 4.0  | 6.9            | 5.6  | 4.0  |
| 09104106N    | VLBS 6.7     | 6.7        | 6.7  | 11.6           | 9.4  | 6.7  |
| 09104110N    | VLBS 10      | 10.0       | 10.0 | 17.3           | 14.1 | 10.0 |
| 09104116N    | VLBS 16      | 16.0       | 16.0 | 27.7           | 22.6 | 16.0 |



- Welding instructions supplied.
- CAD drawings available upon request.



- Never exceed Manufacturer's Working Load Limit (WLL).
- Always inspect lifting points carefully before each use!

# LIFTING & LASHING POINTS

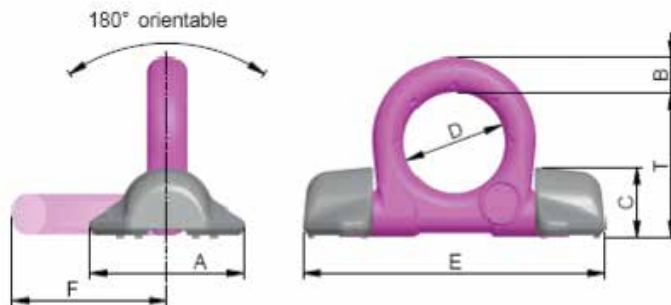
## RUD WELD-ON

### Load Rings – VRBS



| Product Code | RUD Item No. | WLL  | Dimensions (mm) |    |     |     |     |     | Net Weight |
|--------------|--------------|------|-----------------|----|-----|-----|-----|-----|------------|
|              |              | t    | A               | B  | C   | D   | E   | T   | kg         |
| 09104004N    | VRBS 4       | 4.0  | 62              | 14 | 28  | 48  | 135 | 65  | 0.8        |
| 09104006N    | VRBS 6.7     | 6.7  | 88              | 20 | 39  | 60  | 170 | 84  | 2.1        |
| 09104010N    | VRBS 10      | 10.0 | 100             | 22 | 46  | 65  | 195 | 95  | 2.8        |
| 09104016N    | VRBS 16      | 16.0 | 130             | 30 | 57  | 90  | 263 | 127 | 6.6        |
| 09104030N    | VRBS 31.5    | 31.5 | 160             | 42 | 78  | 130 | 375 | 178 | 19.0       |
| 09104050N*   | VRBS 50      | 50.0 | 240             | 70 | 120 | 230 | 620 | 313 | 54.1       |

\* Available on indent.



The VRBS Load Ring offers a functional, compact innovative design. The range is 100% electro-magnetic crack tested and painted in the unique durable RUD pink powder coated finish.

- Manufactured from high tensile CrNiMo – steel.
- Offers full WLL in any direction with 4:1 lifting design factor.
- Complies with EN1677.
- Rated capacity can be increased 100% in lashing applications.
- Test certificates available, full traceability on Load Rings.
- 100% electro-magnetic crack detection tested.
- Mounting blocks fully prepared for welding including distance lugs.
- Manufactured in Germany.

### VRBS Working Load Limits – G in Tonnes

| Lifting Mode |              | Single Leg |      | 2, 3 or 4 Legs |      |      |
|--------------|--------------|------------|------|----------------|------|------|
|              |              |            |      |                | 60°  | 90°  |
| Product Code | RUD Item No. | G          | G    | G              |      |      |
| 09104004N    | VRBS 4       | 4.0        | 4.0  | 6.9            | 5.6  | 4.0  |
| 09104006N    | VRBS 6.7     | 6.7        | 6.7  | 11.6           | 9.4  | 6.7  |
| 09104010N    | VRBS 10      | 10.0       | 10.0 | 17.3           | 14.1 | 10.0 |
| 09104016N    | VRBS 16      | 16.0       | 16.0 | 27.7           | 22.6 | 16.0 |
| 09104030N    | VRBS 31.5    | 31.5       | 31.5 | 54.5           | 44.5 | 31.5 |
| 09104050N    | VRBS 50      | 50.0       | 50.0 | 86.5           | 70.5 | 50.0 |



- Welding instructions supplied.
- CAD drawings available upon request.



- Never exceed Manufacturer's Working Load Limit (WLL).
- Always inspect lifting points carefully before each use!

# LIFTING & LASHING POINTS

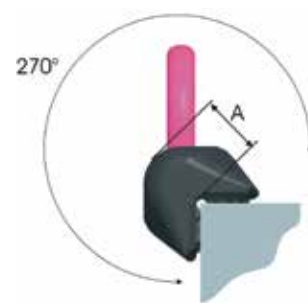
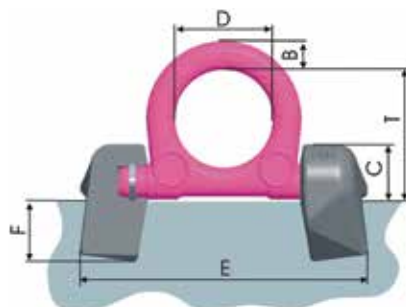
## RUD WELD-ON

### Load Rings – VRBK



| Product Code | RUD Item No. | WLL<br>t | Dimensions (mm) |    |    |    |     |    |    | Net Weight<br>kg |
|--------------|--------------|----------|-----------------|----|----|----|-----|----|----|------------------|
|              |              |          | A               | B  | C  | D  | E   | F  | T  |                  |
| 09104131*    | VRBK 4       | 4.0      | 32              | 14 | 28 | 48 | 140 | 29 | 65 | 1.1              |
| 09104132*    | VRBK 6.7     | 6.7      | 40              | 20 | 35 | 60 | 180 | 33 | 84 | 2.1              |
| 09104133*    | VRBK 10      | 10.0     | 52              | 22 | 46 | 65 | 212 | 46 | 94 | 4.4              |

\* Available on indent.



The VRBK Load Ring is designed for lifting on 90° edges. The range is 100% electro-magnetic crack tested and painted in the unique durable RUD pink powder coated finish.

- Manufactured from high tensile CrNiMo – steel.
- Low profile and 270° pivoting.
- Offers a full WLL in any direction with 4:1 lifting design factor.
- Complies with EN1677.
- Rated capacity can be increased 100% in lashing applications.
- Test certificates available, with full traceability.
- 100% electro-magnetic crack detection tested.
- Mounting blocks fully prepared for welding including distance lugs.
- Internal position holding springs to reduce vibration noise.
- Available for 90° edges with WLL's up to 10,000kg.
- Manufactured in Germany.

### VRBK Working Load Limits – G in Tonnes

| Lifting Mode |              | Single Leg |      | 2, 3 or 4 Legs |      |      |
|--------------|--------------|------------|------|----------------|------|------|
|              |              |            |      |                | 60°  | 90°  |
| Product Code | RUD Item No. |            |      |                |      |      |
| 09104131     | VRBK 4       | 4.0        | 4.0  | 6.9            | 5.6  | 4.0  |
| 09104132     | VRBK 6.7     | 6.7        | 6.7  | 11.6           | 9.4  | 6.7  |
| 09104133     | VRBK 10      | 10.0       | 10.0 | 17.3           | 14.1 | 10.0 |



- Welding instructions supplied.
- CAD drawings available upon request.



- Never exceed Manufacturer's Working Load Limit (WLL).
- Always inspect lifting points carefully before each use!
- The VRBK must be able to pivot 270° when installed.

08

LIFTING POINTS  
& EYE BOLTS

# LIFTING & LASHING POINTS

## RUD WELD-ON

### Lifting Points – WPP-S with Hook



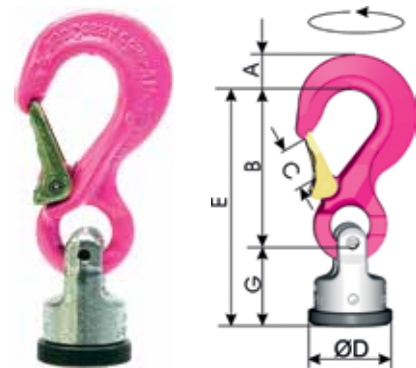
| Product Code | RUD Item No. | WLL       | Dimensions (mm) |     |    |     |     |     | Net Weight |
|--------------|--------------|-----------|-----------------|-----|----|-----|-----|-----|------------|
|              |              | t         | A               | B   | C  | D   | E   | G   | kg         |
| 09104751*    | WPP-S-0.63   | 0.63      | 13              | 75  | 18 | 40  | 115 | 40  | 0.4        |
| 09104752*    | WPP-S-1.5    | 1.5       | 20              | 97  | 25 | 46  | 147 | 50  | 1.0        |
| 09104753*    | WPP-S-2.5    | 2.5       | 28              | 126 | 30 | 61  | 187 | 61  | 1.5        |
| 09104754*    | WPP-S-4      | 4.0       | 36              | 150 | 35 | 78  | 222 | 77  | 3.3        |
| 09104755*    | WPP-S-5      | 5.0 (6.7) | 37              | 174 | 40 | 95  | 267 | 93  | 7.1        |
| 09104756*    | WPP-S-8      | 8.0 (10)  | 49              | 208 | 48 | 100 | 310 | 102 | 8.2        |

( ) Increased WLL in axial load direction. \* Available on indent.

The first generation of lifting points for welding with a universal connection for every slinging means (sling chains, round slings, wire ropes, etc).

Provided with a double ball-bearing which enables jerk – free tilting, swivelling and turning .

- Optimised design avoids damage when swivelling.
- Complies with EN1677.
- 4:1 design factor.
- Manufactured in Germany.



08  
LIFTING POINTS  
& EYE BOLTS

### WPP-S Working Load Limits – G in Tonnes (Fixed or Swivelling)

| Lifting Mode |              | Single Leg |      | 2, 3 or 4 Legs |      |      |
|--------------|--------------|------------|------|----------------|------|------|
|              |              |            |      |                |      |      |
| Product Code | RUD Item No. |            |      | 60°            | 90°  | 120° |
| 09104751     | WPP-S-0.63   | 0.63       | 0.63 | 1.1            | 0.89 | 0.63 |
| 09104752     | WPP-S-1.5    | 1.5        | 1.5  | 2.6            | 2.1  | 1.5  |
| 09104753     | WPP-S-2.5    | 2.5        | 2.5  | 4.3            | 3.5  | 2.5  |
| 09104754     | WPP-S-4      | 4.0        | 4.0  | 6.9            | 5.6  | 4.0  |
| 09104755     | WPP-S-5      | 6.7        | 5.0  | 8.6            | 7.0  | 5.0  |
| 09104756     | WPP-S-8      | 10.0       | 8.0  | 13.8           | 11.3 | 8.0  |

• Welding instructions supplied.  
• CAD drawings available upon request.

• Never exceed Manufacturer's Working Load Limit (WLL).  
• Always inspect lifting points carefully before each use!  
• Not suitable for permanent swivelling under load.



# LIFTING & LASHING POINTS

## RUD WELD-ON

### Lifting Points – WPP-B with Lifting Ring



| Product Code | RUD Item No. | WLL       | Dimensions (mm) |     |    |     |     |     |                | Net Weight |
|--------------|--------------|-----------|-----------------|-----|----|-----|-----|-----|----------------|------------|
|              |              | t         | A               | B   | C  | D   | E   | G   | R <sup>1</sup> | kg         |
| 09104761*    | WPP-B-0.63   | 0.63      | 9               | 65  | 35 | 40  | 105 | 40  | 15             | 0.35       |
| 09104762*    | WPP-B-1.5    | 1.5       | 11              | 65  | 35 | 46  | 115 | 50  | 15             | 0.6        |
| 09104763*    | WPP-B-2.5    | 2.5       | 13              | 74  | 40 | 61  | 135 | 61  | 18             | 1.0        |
| 09104764*    | WPP-B-4      | 4.0       | 16              | 95  | 45 | 78  | 172 | 77  | 20             | 2.3        |
| 09104765*    | WPP-B-5      | 5.0 (6.7) | 19              | 130 | 60 | 95  | 223 | 93  | 25             | 4.7        |
| 09104766*    | WPP-B-8      | 8.0 (10)  | 24              | 140 | 65 | 100 | 242 | 102 | 28             | 5.3        |

( ) Increased WLL in axial load direction. \* Available on indent.

The first generation of lifting points for welding provided with a double ball-bearing which enables jerk – free tilting, swivelling and turning.

- Ring provides convenient connection to shackle, hook, etc.
- Optimal design avoids damage when swivelling.
- Complies with EN1677.
- 4:1 design factor.
- Manufactured in Germany.



### WPP-B Working Load Limits – G in Tonnes (Fixed or Swivelling)

| Lifting Mode |              | Single Leg |      | 2, 3 or 4 Legs |      |      |
|--------------|--------------|------------|------|----------------|------|------|
|              |              |            |      |                | 60°  | 90°  |
| Product Code | RUD Item No. |            |      |                |      |      |
| 09104761     | WPP-B-0.63   | 0.63       | 0.63 | 1.1            | 0.89 | 0.63 |
| 09104762     | WPP-B-1.5    | 1.5        | 1.5  | 2.6            | 2.1  | 1.5  |
| 09104763     | WPP-B-2.5    | 2.5        | 2.5  | 4.3            | 3.5  | 2.5  |
| 09104764     | WPP-B-4      | 4.0        | 4.0  | 6.9            | 5.6  | 4.0  |
| 09104765     | WPP-B-5      | 6.7        | 5.0  | 8.6            | 7.0  | 5.0  |
| 09104766     | WPP-B-8      | 10.0       | 8.0  | 13.8           | 11.3 | 8.0  |



- Welding instructions supplied.
- CAD drawings available upon request.



- Never exceed Manufacturer's Working Load Limit (WLL).
- Always inspect lifting points carefully before each use!
- Not suitable for permanent swivelling under load.

# LIFTING & LASHING POINTS

## RUD WELD-ON

### Lifting Points – WPP-VIP

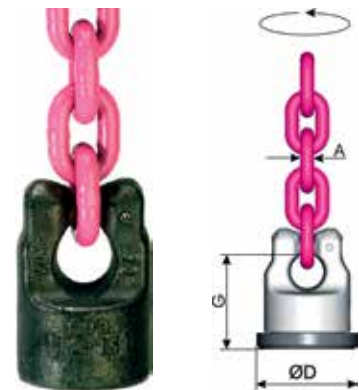


| Product Code | RUD Item No.  | WLL       | Dimensions (mm) |     |     | Net Weight |
|--------------|---------------|-----------|-----------------|-----|-----|------------|
|              |               | t         | A               | B   | C   | kg         |
| 09104771*    | WPP-VIP4-0.63 | 0.63      | 4               | 40  | 40  | 0.25       |
| 09104772*    | WPP-VIP6-1.5  | 1.5       | 6               | 46  | 50  | 0.45       |
| 09104773*    | WPP-VIP8-2.5  | 2.5       | 8               | 61  | 61  | 0.85       |
| 09104774*    | WPP-VIP10-4   | 4.0       | 10              | 78  | 77  | 2.1        |
| 09104775*    | WPP-VIP13-5   | 5.0 (6.7) | 13              | 95  | 93  | 3.4        |
| 09104776*    | WPP-VIP16-8   | 8.0 (10)  | 16              | 100 | 102 | 4.5        |

( ) Increased WLL in axial load direction. \* Available on indent.

The first generation of weldable lifting points with a double ball-bearing load point with clevis for direct connection to Grade 100 chain.

- Optimal design avoids damage when swivelling.
- Complies with EN1677.
- 4:1 design factor.
- Manufactured in Germany.



08  
LIFTING POINTS  
& EYE BOLTS

### WPP-VIP Working Load Limits – G in Tonnes (Fixed or Swivelling)

| Lifting Mode |               | Single Leg |      | 2, 3 or 4 Legs |      |      |
|--------------|---------------|------------|------|----------------|------|------|
|              |               |            |      |                | 60°  | 90°  |
| Product Code | RUD Item No.  |            |      |                |      |      |
| 09104771     | WPP-VIP4-0.63 | 0.63       | 0.63 | 1.1            | 0.89 | 0.63 |
| 09104772     | WPP-VIP6-1.5  | 1.5        | 1.5  | 2.6            | 2.1  | 1.5  |
| 09104773     | WPP-VIP8-2.5  | 2.5        | 2.5  | 4.3            | 3.5  | 2.5  |
| 09104774     | WPP-VIP10-4   | 4.0        | 4.0  | 6.9            | 5.6  | 4.0  |
| 09104775     | WPP-VIP13-5   | 6.7        | 5.0  | 8.6            | 7.0  | 5.0  |
| 09104776     | WPP-VIP16-8   | 10.0       | 8.0  | 13.8           | 11.3 | 8.0  |



- Welding instructions supplied.
- CAD drawings available upon request.



- Never exceed Manufacturer's Working Load Limit (WLL).
- Always inspect lifting points carefully before each use!
- RUD warranty applies when used with RUD VIP Grade 100 chain.
- Not suitable for permanent swivelling under load.

# LIFTING & LASHING POINTS

## RUD STAINLESS WELD-ON

Load Rings – Stainless Steel LBS-RS

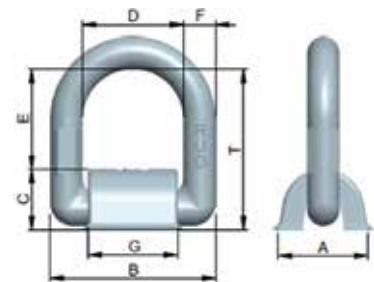


| Product Code | RUD Item No. | WLL<br>t | Dimensions (mm) |     |    |    |    |      |    |     |     | Net Weight<br>kg |
|--------------|--------------|----------|-----------------|-----|----|----|----|------|----|-----|-----|------------------|
|              |              |          | A               | B   | C  | D  | E  | Ø F  | G  | H   | T   |                  |
| 09104191*(1) | LBS-RS 0.5   | 0.5      | 32              | 65  | 36 | 25 | 39 | 13.5 | 33 | 69  | 64  | 0.3              |
| 09104192*(1) | LBS-RS 1     | 1.0      | 42              | 85  | 50 | 31 | 50 | 16.5 | 46 | 87  | 81  | 0.6              |
| 09104193*    | LBS-RS 2     | 2.0      | 61              | 110 | 65 | 44 | 72 | 22.5 | 60 | 125 | 116 | 1.6              |

\* Available on indent. (1) Without spring.

Stainless steel load ring for welding. Manufactured from material 1.4571 (stainless steel). The chemical resistance and resistance against pitting by chloride media has been increased due to the Mo content.

- Incorporates a 180° pivoting action for multi position loading.
- In it's welded condition is resistant against intercrystalline corrosion, when being used in permanent operation, up to 400°C.
- The material 1.4571 is widely used in the chemical, petroleum, coal-tar, chemistry and textile industries.
- Manufactured in Germany.



Distance lugs for root weld.



### LBS-RS Working Load Limits – G in Tonnes

| Lifting Mode |              | Single Leg |     | 2, 3 or 4 Legs |      |     |
|--------------|--------------|------------|-----|----------------|------|-----|
|              |              |            |     |                | 60°  | 90° |
| Product Code | RUD Item No. |            |     |                |      |     |
| 09104191     | LBS-RS 0.5   | 0.5        | 0.5 | 0.86           | 0.70 | 0.5 |
| 09104192     | LBS-RS 1     | 1.0        | 1.0 | 1.70           | 1.40 | 1.0 |
| 09104193     | LBS-RS 2     | 2.0        | 2.0 | 3.50           | 2.80 | 2.0 |



- Welding instructions supplied.
- CAD drawings available upon request.



- Never exceed Manufacturer's Working Load Limit (WLL).
- Always inspect lifting points carefully before each use!

# LIFTING & LASHING POINTS

## RUD BOLT-ON

ALL BOLT-ON LIFTING EYES ARE NOT CREATED EQUAL!

While conventional eye bolts do have their place, they are not suitable for certain lifting applications, particularly where side loading may occur or where load rotation may lead to the eye bolt unscrewing.

It is critical from a safety perspective that you use only proven quality lifting points from reputable manufacturers. RUD Lifting and Lashing Points, manufactured in Germany, meet exacting quality standards and will provide the assurance you require.

### THE WRONG WAY

INCORRECT LOADING ON IMPROVISED LIFTING POINTS!



Frequently, heavy fabricated plates are used which have not been designed for a possible inclined load, or they have been over dimensioned which prevents hooks with a small width or shackles from being attached.

SAFETY HAZARDS!



Using non-rated eye bolts, or side loading conventional eye bolts can pose significant safety risks.

### THE RIGHT WAY



RUD Starpoint Eye Bolts, PowerPoint® or VLBG bolt-on Lifting Points can be adjusted to the load direction offering full Working Load Limit (WLL).

RUD Lifting Points are designed with a low installation height, high dynamic and static strength. All RUD Lifting Points complies with EN1677 with every original RUD bolt crack detection tested.

# LIFTING & LASHING POINTS

## RUD BOLT-ON

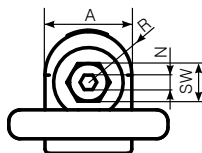
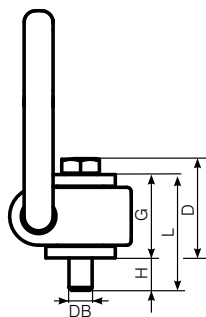
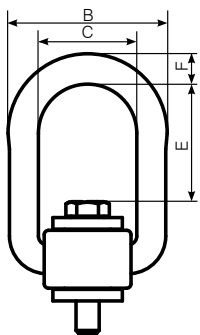
Load Rings – VLBG Standard Bolt Length Model



| Product Code | RUD Item No. | WLL  |       | Dimensions (mm) |     |     |     |     |      |    |    |     |    |    |     |    |       | N. W.<br>kg |
|--------------|--------------|------|-------|-----------------|-----|-----|-----|-----|------|----|----|-----|----|----|-----|----|-------|-------------|
|              |              | t    | kg    | A               | B   | C   | D   | E   | F    | G  | H  | L   | N  | SW | R   | DB |       |             |
| 09104251     | VLBG M8      | 0.3  | 30    | 30              | 54  | 34  | 35  | 40  | 10   | 29 | 11 | 40  | 5  | 13 | 32  | 24 | 0.30  |             |
| 09104252     | VLBG M10     | 0.63 | 60    | 30              | 54  | 34  | 36  | 39  | 10   | 29 | 16 | 45  | 6  | 17 | 32  | 24 | 0.32  |             |
| 09104253     | VLBG M12     | 1.0  | 100   | 32              | 54  | 34  | 37  | 38  | 10   | 29 | 21 | 50  | 8  | 19 | 32  | 26 | 0.33  |             |
| 09104254     | VLBG M16     | 1.5  | 150   | 33              | 56  | 36  | 46  | 39  | 13.5 | 36 | 24 | 60  | 10 | 24 | 38  | 30 | 0.55  |             |
| 09104255     | VLBG M20     | 2.5  | 250   | 50              | 82  | 54  | 55  | 55  | 16.5 | 43 | 32 | 75  | 12 | 30 | 48  | 45 | 1.30  |             |
| 09104256     | VLBG M24     | 4.0  | 400   | 50              | 82  | 54  | 58  | 67  | 18   | 43 | 37 | 80  | 14 | 36 | 48  | 45 | 1.50  |             |
| 09104257     | VLBG M27     | 4.0  | 400   | 60              | 103 | 65  | 78  | 69  | 22.5 | 61 | 39 | 100 | 17 | 41 | 67  | 60 | 3.10  |             |
| 09104258     | VLBG M30     | 5.0  | 500   | 60              | 103 | 65  | 80  | 67  | 22.5 | 61 | 49 | 110 | 17 | 46 | 67  | 60 | 3.30  |             |
| 09104259     | VLBG M36     | 7.0  | 700   | 60              | 103 | 65  | 72  | 74  | 22.5 | 55 | 52 | 107 | —  | 55 | 67  | 60 | 3.40  |             |
| 09104260     | VLBG M36     | 8.0  | 800   | 77              | 122 | 82  | 100 | 97  | 26.5 | 77 | 63 | 140 | 22 | 55 | 85  | 70 | 6.20  |             |
| 09104261*    | VLBG M42     | 10.0 | 1,000 | 77              | 122 | 82  | 103 | 94  | 26.5 | 77 | 73 | 150 | 24 | 65 | 87  | 70 | 6.70  |             |
| 09104262*    | VLBG M42     | 15.0 | 1,500 | 95              | 156 | 100 | 113 | 109 | 36   | 87 | 63 | 150 | 24 | 65 | 100 | 85 | 11.20 |             |
| 09104263*    | VLBG M48     | 20.0 | 2,000 | 95              | 156 | 100 | 117 | 105 | 36   | 87 | 73 | 160 | 27 | 75 | 100 | 95 | 11.60 |             |

Note: RUD Item No. includes thread diameter. Refer column H for bolt length

\* Available on indent.



The VLBG Load Ring offers a functional, compact innovative design. Rings are 100% electro-magnetic crack tested and painted in the unique durable RUD pink powder coat finish. 360° rotation and 180° pivoting.

- Manufactured using high tensile CrNiMo steel.
- Offers a full WLL in any direction with 4:1 lifting design factor.
- Complies with EN1677.
- Rated capacity can be increased 100% in specific lashing applications.
- Test certificates available, with full traceability on Ring Bolts.
- 100% electro-magnetic crack detection tested.
- UNC threads also available on indent.
- Manufactured in Germany.



- CAD drawings available upon request.
- For different bolt length refer Vario model on the following page.



- Never exceed Manufacturer's Working Load Limit (WLL).
- Always inspect lifting points carefully before each use!
- The VLBG must be rotatable 360° when installed.

# LIFTING & LASHING POINTS

## RUD BOLT-ON

Load Rings – VLBG VARIO Variable Bolt Length



| Product Code | RUD Item No. | WLL  | Torque | Dimensions (mm) |     |      |    |          |         |     |
|--------------|--------------|------|--------|-----------------|-----|------|----|----------|---------|-----|
|              |              | t    | Nm     | D               | E   | F    | G  | H        | L (max) | T   |
| 09104251V*   | VLBG M8      | 0.3  | 30     | 24              | 40  | 10.0 | 29 | 8 – 76   | 105     | 75  |
| 09104252V*   | VLBG M10     | 0.63 | 60     | 24              | 39  | 10.0 | 29 | 10 – 96  | 125     | 75  |
| 09104253V*   | VLBG M12     | 1.0  | 100    | 26              | 38  | 10.0 | 29 | 12 – 116 | 145     | 75  |
| 09104254V*   | VLBG M16     | 1.5  | 150    | 30              | 39  | 13.5 | 36 | 16 – 149 | 185     | 85  |
| 09104255V*   | VLBG M20     | 2.5  | 250    | 45              | 55  | 16.5 | 43 | 20 – 187 | 230     | 110 |
| 09104256V*   | VLBG M24     | 4.0  | 400    | 45              | 67  | 18.0 | 43 | 24 – 222 | 265     | 125 |
| 09104258V*   | VLBG M30     | 5.0  | 500    | 60              | 67  | 22.5 | 61 | 30 – 279 | 340     | 147 |
| 09104260V*   | VLBG M36     | 8.0  | 800    | 70              | 97  | 26.5 | 77 | 36 – 223 | 300     | 197 |
| 09104261V*   | VLBG M42     | 10.0 | 1,000  | 70              | 94  | 26.5 | 77 | 42 – 273 | 350     | 197 |
| 09104262V*   | VLBG M42     | 15.0 | 1,500  | 85              | 109 | 36.0 | 87 | 42 – 263 | 350     | 222 |
| 09104263V*   | VLBG M48     | 20.0 | 2,000  | 95              | 105 | 36.0 | 87 | 48 – 303 | 350     | 222 |

Note: RUD Item No. includes thread diameter. \* Available on indent.

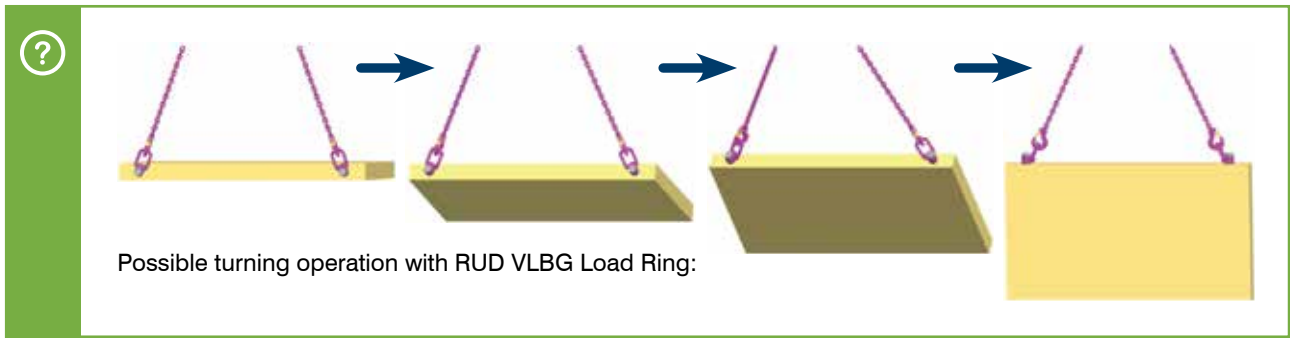
Same as VLBG Load Rings detailed on previous page with variable bolt lengths available as detailed in column H.

- Manufactured using high tensile CrNiMo steel.
- Offers a full WLL in any direction with 4:1 lifting design factor.
- Complies with EN1677.
- Rated capacity can be increased 100% in specific lashing applications.
- Test certificates available, with full traceability on Ring Bolts.
- 100% electro-magnetic crack detection tested.
- UNC threads also available on request.
- Supplied with two nuts.
- Manufactured in Germany.



08  
LIFTING POINTS  
& EYE BOLTS

• CAD drawings available upon request.



• Vario option is not available for VLBG 4T M27. Alternative: 09104256V (VLBG 4T M24)  
• Vario option is not available for VLBG 7T M36. Alternative: 091047260V (VLBG 8T M36)

• Never exceed Manufacturer's Working Load Limit (WLL).  
• Always inspect lifting points carefully before each use!  
• The VLBG must be rotatable 360° when installed.

# LIFTING & LASHING POINTS

## RUD BOLT-ON

VLBG Working Load Limits – G in Tonnes



| Lifting Mode |              | Single Leg  |   | 2, 3 or 4 Legs  |      |      |
|--------------|--------------|---|---|---|------|------|
|              |              |  G |  G |  | 60°  | 90°  |
| Product Code | RUD Item No. |   |   |   |      |      |
| 09104251     | VLBG M8      | 0.30  | 0.30  | 0.52  | 0.42 | 0.30 |
| 09104252     | VLBG M10     | 0.63  | 0.63  | 1.1   | 0.89 | 0.63 |
| 09104253     | VLBG M12     | 1.0   | 1.0   | 1.7   | 1.4  | 1.0  |
| 09104254     | VLBG M16     | 1.5   | 1.5   | 2.6   | 2.1  | 1.5  |
| 09104255     | VLBG M20     | 2.5   | 2.5   | 4.3   | 3.5  | 2.5  |
| 09104256     | VLBG M24     | 4.0   | 4.0   | 6.9   | 5.6  | 4.0  |
| 09104257     | VLBG M27     | 4.0   | 4.0   | 6.9   | 5.6  | 4.0  |
| 09104258     | VLBG M30     | 5.0   | 5.0   | 8.6   | 7.0  | 5.0  |
| 09104259     | VLBG M36     | 7.0   | 7.0   | 12.1  | 9.9  | 7.0  |
| 09104260     | VLBG M36     | 8.0   | 8.0   | 13.8  | 11.3 | 8.0  |
| 09104261     | VLBG M42     | 10.0  | 10.0  | 17.3  | 14.1 | 10.0 |
| 09104262     | VLBG M42     | 15.0  | 15.0  | 26.0  | 21.2 | 15.0 |
| 09104263     | VLBG M48     | 20.0  | 20.0  | 34.6  | 28.2 | 20.0 |



08

LIFTING POINTS  
& EYE BOLTS



• WLL chart applies to both standard bolt length and variable bolt length (Vario) models.



- Never exceed Manufacturer's Working Load Limit (WLL).
- Always inspect lifting points carefully before each use!
- The VLBG must be rotatable 360° when installed.

# LIFTING & LASHING POINTS

## RUD BOLT-ON

Spare Bolts to suit VLBG Load Rings



| Product Code | Suit RUD VLBG | Threat Size | Threat Length (mm) |                |                |
|--------------|---------------|-------------|--------------------|----------------|----------------|
|              |               |             | VLBG Standard      | Minimum Length | Maximum Length |
| 09104251B*   | 0.3 T         | M8          | 11                 | 8              | 76             |
| 09104252B*   | 0.63 T        | M10         | 16                 | 10             | 96             |
| 09104253B*   | 1.0 T         | M12         | 21                 | 12             | 116            |
| 09104254B*   | 1.5 T         | M16         | 24                 | 16             | 149            |
| 09104255B*   | 2.5 T         | M20         | 32                 | 20             | 187            |
| 09104256B*   | 4.0 T         | M24         | 37                 | 24             | 222            |
| 09104257B*   | 4.0 T         | M27         | 39                 | n.a.           | n.a.           |
| 09104258B*   | 5.0 T         | M30         | 49                 | 30             | 279            |
| 09104260B*   | 8.0 T         | M36         | 63                 | 36             | 223            |
| 09104261B*   | 10.0 T        | M42         | 73                 | 42             | 273            |
| 09104262B*   | 15.0 T        | M42         | 63                 | 42             | 263            |
| 09104263B*   | 20.0 T        | M48         | 73                 | 48             | 303            |

\* Available on indent.

Original RUD bolts available for Standard and Vario VLBG Load Ring assemblies.

RUD Spare Bolts comply with DIN580 and are supplied complete with washer and 2 crack tested nuts.

- Longer bolts (Vario) are not available for VLBG 4.0T M27.
- Spare bolts are not available for VLBG 7.0T M36.
- Manufactured in Germany.



08

LIFTING POINTS  
& EYE BOLTS



# LIFTING & LASHING POINTS

## RUD BOLT-ON

### ICE-LBG-SR Super Rotational Ring Bolts



The new ICE-LBG-SR Series manufactured by RUD in Germany provides safer turning and mounting thanks to the unique double ball bearing arrangement.

The ICE-LBG-SR range of load rings maintain the same mounting size as the VLBG range but offer several advantages where there is constant rotary movement.

The ICE-LBG-SR ring bolts can be fully loaded in all directions whether vertically or at 90 degrees to the bolt. The special double ball bearing arrangement transfer the forces under load into rotation without jerking, avoiding unfastening of the fixing bolt.

08

LIFTING POINTS  
& EYE BOLTS



RUD Unique Double Ball Bearing Arrangement.



### New ICE-Bolt

The new ICE-Bolt has increased resistance to bending and reduces sensitivity to hydrogen embrittlement. Ultimately this translates to maximum safety.

ICE-Bolt – for ICE-LBG-SR – 100% magnetically crack tested with circlip. The hexagon socket bolt is with a snap ring so that it can be captively mounted with the ICE-LBG-SR.

### State-of-the-art approved lifting points by RUD.



# LIFTING & LASHING POINTS

## RUD BOLT-ON

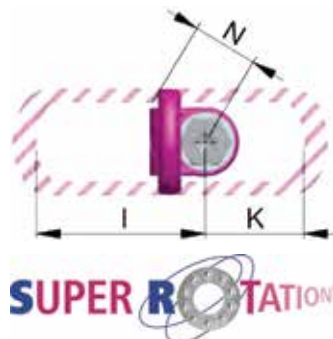
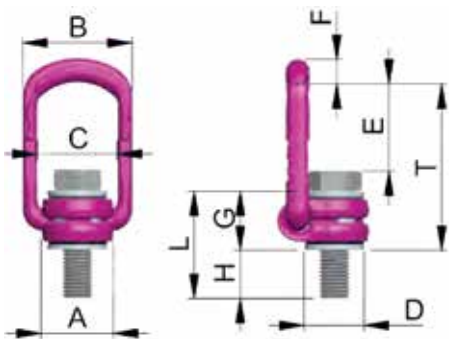
### ICE-LBG-SR Super Rotational – Standard Bolt Length



| Product Code | RUD Item No.   | WLL/Torque |       | Dimensions (mm) |     |     |    |     |      |    |    |     |     |     |     |     | N. W. |
|--------------|----------------|------------|-------|-----------------|-----|-----|----|-----|------|----|----|-----|-----|-----|-----|-----|-------|
|              |                | t          | Nm    | A               | B   | C   | D  | E   | F    | G  | H  | I   | K   | L   | N   | T   | kg    |
| 09104251SR*  | ICE-LBG-SR M8  | 0.3        | 30    | 32              | 50  | 34  | 24 | 40  | 10.0 | 29 | 12 | 75  | 43  | 41  | 32  | 75  | 0.30  |
| 09104252SR*  | ICE-LBG-SR M10 | 0.63       | 60    | 32              | 50  | 34  | 24 | 39  | 10.0 | 29 | 15 | 75  | 43  | 44  | 32  | 74  | 0.31  |
| 09104253SR*  | ICE-LBG-SR M12 | 1.0        | 100   | 32              | 50  | 34  | 26 | 38  | 10.0 | 29 | 18 | 75  | 43  | 47  | 32  | 74  | 0.34  |
| 09104254SR*  | ICE-LBG-SR M16 | 1.5        | 150   | 36              | 54  | 40  | 30 | 39  | 13.5 | 34 | 24 | 86  | 46  | 58  | 38  | 84  | 0.52  |
| 09104255SR*  | ICE-LBG-SR M20 | 2.5        | 250   | 54              | 82  | 60  | 45 | 53  | 17.0 | 45 | 30 | 113 | 61  | 75  | 48  | 110 | 1.30  |
| 09104256SR*  | ICE-LBG-SR M24 | 4.0        | 400   | 54              | 82  | 60  | 45 | 66  | 18.0 | 45 | 36 | 130 | 76  | 80  | 48  | 125 | 1.40  |
| 09104258SR*  | ICE-LBG-SR M30 | 5.0        | 500   | 63              | 102 | 69  | 55 | 66  | 22.5 | 60 | 45 | 151 | 79  | 105 | 66  | 145 | 3.20  |
| 09104260SR*  | ICE-LBG-SR M36 | 8.0        | 800   | 84              | 122 | 90  | 70 | 95  | 26.5 | 79 | 54 | 205 | 110 | 133 | 87  | 197 | 6.00  |
| 09104261SR*  | ICE-LBG-SR M42 | 10.0       | 1,000 | 84              | 122 | 90  | 70 | 92  | 26.5 | 79 | 73 | 205 | 110 | 152 | 87  | 197 | 6.70  |
| 09104262SR*  | ICE-LBG-SR M42 | 15.0       | 1,500 | 105             | 156 | 110 | 90 | 107 | 36.0 | 89 | 63 | 230 | 130 | 152 | 100 | 222 | 11.20 |
| 09104263SR*  | ICE-LBG-SR M48 | 20.0       | 2,000 | 105             | 156 | 110 | 90 | 103 | 36.0 | 89 | 72 | 230 | 130 | 161 | 100 | 222 | 11.60 |

Note: RUD Item No. includes thread diameter. Refer column H for bolt length

\* Available on indent.



Designed for applications where there is constant rotary movement. Double ball bearing avoids unintentional unfastening of fixing bolt. New ICE-Bolt offers increased bending resistance.

- Rotates 360° and pivots 180°.
- Assembly complies with EN1677.
- Corrosion protection.
- Clearly marked with required torque and WLL in all directions.
- Manufactured in Germany.



- CAD drawings available upon request.
- For different bolt length refer Vario model on the following page.



- Never exceed Manufacturer's Working Load Limit (WLL).
- Always inspect lifting points carefully before each use!

08  
LIFTING POINTS  
& EYE BOLTS

# LIFTING & LASHING POINTS

## RUD BOLT-ON

ICE-LBG-SR Super Rotational – Vario Bold Length

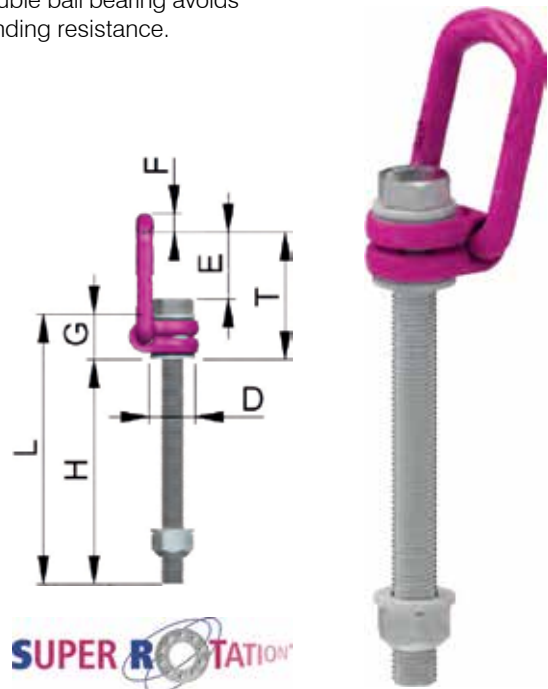


| Product Code | RUD Item No.   | WLL  | Torque | Dimensions (mm) |     |      |    |        |         |     |
|--------------|----------------|------|--------|-----------------|-----|------|----|--------|---------|-----|
|              |                | t    | Nm     | D               | E   | F    | G  | H      | L       | T   |
| 09104251VS*  | ICE-LBG-SR M8  | 0.3  | 30     | 24              | 40  | 10.0 | 29 | 8-76   | 37-105  | 75  |
| 09104252VS*  | ICE-LBG-SR M10 | 0.63 | 60     | 24              | 39  | 10.0 | 29 | 10-96  | 39-125  | 74  |
| 09104253VS*  | ICE-LBG-SR M12 | 1.0  | 100    | 26              | 38  | 10.0 | 29 | 12-116 | 41-145  | 74  |
| 09104254VS*  | ICE-LBG-SR M16 | 1.5  | 150    | 30              | 39  | 13.5 | 34 | 16-149 | 50-185  | 84  |
| 09104255VS*  | ICE-LBG-SR M20 | 2.5  | 250    | 45              | 53  | 17.0 | 45 | 20-187 | 65-230  | 110 |
| 09104256VS*  | ICE-LBG-SR M24 | 4.0  | 400    | 45              | 66  | 18.0 | 45 | 24-222 | 69-265  | 125 |
| 09104258VS*  | ICE-LBG-SR M30 | 5.0  | 500    | 55              | 66  | 22.5 | 60 | 30-279 | 90-340  | 145 |
| 09104260VS*  | ICE-LBG-SR M36 | 8.0  | 800    | 70              | 95  | 26.5 | 79 | 36-221 | 105-300 | 197 |
| 09104261VS*  | ICE-LBG-SR M42 | 10.0 | 1,000  | 70              | 92  | 26.5 | 79 | 42-271 | 111-350 | 197 |
| 09104262VS*  | ICE-LBG-SR M42 | 15.0 | 1,500  | 90              | 107 | 36.0 | 89 | 42-261 | 121-350 | 222 |
| 09104263VS*  | ICE-LBG-SR M48 | 20.0 | 2,000  | 90              | 103 | 36.0 | 89 | 48-301 | 137-390 | 222 |

RUD Item No. includes thread diameter. \* Available on indent.

Designed for applications where there is constant rotary movement. Double ball bearing avoids unintentional unfastening of fixing bolt. New ICE-Bolt offers increased bending resistance.

- Rotates 360° and pivots 180°.
- Available in variable bolt lengths (refer column H above).
- Corrosion protection.
- Clearly marked with required torque and WLL in all directions.
- Manufactured in Germany.



• CAD drawings available upon request.



- Never exceed Manufacturer's Working Load Limit (WLL).
- Always inspect lifting points carefully before each use!

# LIFTING & LASHING POINTS



## RUD BOLT-ON

ICE-LBG-SR Working Load Limits – G in Tonnes



| Product Code   |              |         | 09104251SR<br>09104251VS | 09104252SR<br>09104252VS | 09104253SR<br>09104253VS | 09104254SR<br>09104254VS | 09104255SR<br>09104255VS | 09104256SR<br>09104256VS | 09104258SR<br>09104258VS | 09104260SR<br>09104260VS | 09104261SR<br>09104261VS | 09104262SR<br>09104262VS | 09104263SR<br>09104263VS |
|----------------|--------------|---------|--------------------------|--------------------------|--------------------------|--------------------------|--------------------------|--------------------------|--------------------------|--------------------------|--------------------------|--------------------------|--------------------------|
| Type           |              |         | 0.3t                     | 0.63t                    | 1.0t                     | 1.5t                     | 2.5t                     | 4.0t                     | 5.0t                     | 8.0t                     | 10.0t                    | 15.0t                    | 20.0t                    |
| Thread Size    |              |         | M8                       | M10                      | M12                      | M16                      | M20                      | M24                      | M30                      | M36                      | M42                      | M42                      | M48                      |
| Number of Legs |              | $\beta$ |                          |                          |                          |                          |                          |                          |                          |                          |                          |                          |                          |
|                | 1            | 0°      | 0.30                     | 0.63                     | 1.0                      | 1.5                      | 2.5                      | 4.0                      | 5.0                      | 8.0                      | 10.0                     | 15.0                     | 20.0                     |
|                | 1            | 90°     | 0.30                     | 0.63                     | 1.0                      | 1.5                      | 2.5                      | 4.0                      | 5.0                      | 8.0                      | 10.0                     | 15.0                     | 20.0                     |
|                | 2, 3<br>or 4 | 60°     | 0.52                     | 1.10                     | 1.7                      | 2.6                      | 4.3                      | 6.9                      | 8.6                      | 13.8                     | 17.3                     | 26.0                     | 34.6                     |
|                | 2, 3<br>or 4 | 90°     | 0.42                     | 0.89                     | 1.4                      | 2.1                      | 3.5                      | 5.6                      | 7.0                      | 11.3                     | 14.1                     | 21.2                     | 28.2                     |
|                | 2, 3<br>or 4 | 120°    | 0.30                     | 0.63                     | 1.0                      | 1.5                      | 2.5                      | 4.0                      | 5.0                      | 8.0                      | 10.0                     | 15.0                     | 20.0                     |

08  
LIFTING POINTS  
& EYE BOLTS

• WLL chart applies to both standard bolt length and variable bolt length (vario) models.

• Never exceed Manufacturer's Working Load Limit (WLL).  
• Always inspect lifting points carefully before each use!

# LIFTING & LASHING POINTS

## RUD BOLT-ON

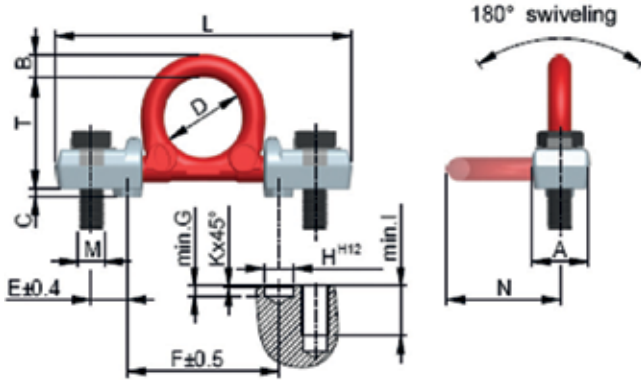
Load Ring – RBG / VRBG



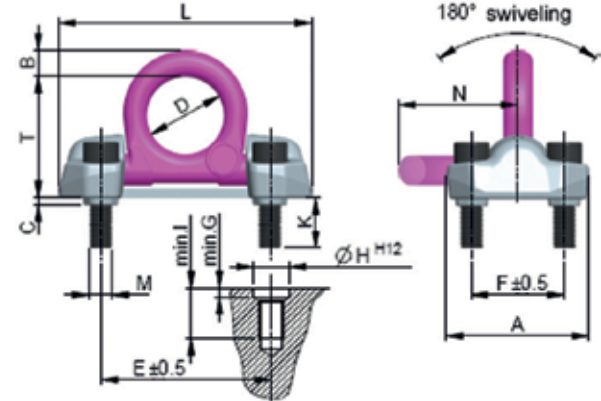
| Product Code | RUD Item No. | WLL<br>t | Torque<br>Nm | Dimensions (mm) |    |   |    |     |     |    |    |    |    |     |    |     |     | Screw       | N. W.<br>kg |
|--------------|--------------|----------|--------------|-----------------|----|---|----|-----|-----|----|----|----|----|-----|----|-----|-----|-------------|-------------|
|              |              |          |              | A               | B  | C | D  | E   | F   | G  | H  | J  | K  | L   | M  | N   | T   |             |             |
| 09104990*    | RBG 3        | 3        | 120          | 34              | 16 | 5 | 48 | 22  | 92  | 6  | 18 | 30 | 1  | 178 | 16 | 71  | 67  | M16x50-10.9 | 0.9         |
| 09104991*    | RBG 8        | 8        | 200          | 120             | 22 | 6 | 65 | 143 | 78  | 8  | 30 | 50 | 45 | 194 | 20 | 100 | 102 | M20x70-12.9 | 4.1         |
| 09104994*    | VRBG 10      | 10       | 300          | 120             | 22 | 6 | 65 | 143 | 78  | 8  | 30 | 50 | —  | 213 | 20 | 100 | 102 | M20x70-12.9 | 4.1         |
| 09104995*    | VRBG 16      | 16       | 600          | 170             | 30 | 8 | 90 | 198 | 104 | 10 | 46 | 70 | —  | 270 | 30 | 134 | 131 | M30x90-12.9 | 11.3        |

\* Available on indent.

### RBG 3



### RBG 8, VRBG 10, VRBG 16



Lifting points ready for bolting with patented relief naps, protecting the fixing screws against bending- and shearing loads. This provides additional safety. Stowable with smaller bolts and thus low profile.

- Manufactured using Grade 80 material.
- Complies with EN1677.
- 100% electro-magnetic crack detection tested.
- Multi-directional loading.
- Ring folds flat.
- Rated capacity can be increased 100% in lashing applications.
- Manufactured in Germany.

## VLBG Working Load Limits – G in Tonnes

| Lifting Mode |              | Single Leg |    | 2, 3 or 4 Legs |      |     |
|--------------|--------------|------------|----|----------------|------|-----|
|              |              |            |    |                | 60°  | 90° |
| Product Code | RUD Item No. |            |    |                |      |     |
| 09104990     | RBG 3        | 3          | 3  | 5.2            | 4.2  | 3   |
| 09104991     | RBG 8        | 8          | 8  | 13.8           | 11.3 | 8   |
| 09104994     | VRBG 10      | 10         | 10 | 17.3           | 14.1 | 10  |
| 09104995     | VRBG 16      | 16         | 16 | 27.7           | 22.6 | 16  |



• CAD drawings available upon request.

• Never exceed Manufacturer's Working Load Limit (WLL).  
• Always inspect lifting points carefully before each use!

# LIFTING & LASHING POINTS

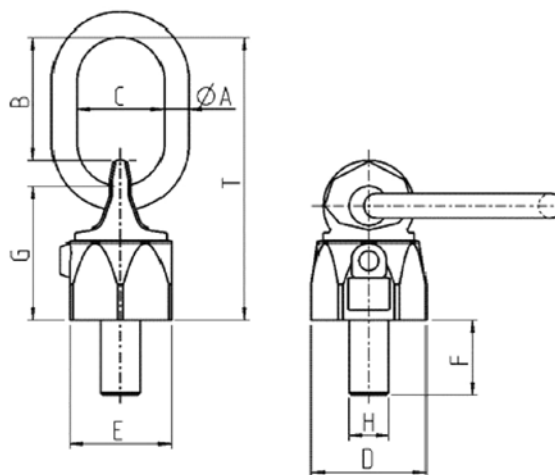
## RUD BOLT-ON

### Swivel Load Ring – VWBG-V



| Product Code | RUD Item No. | WLL<br>t | Dimensions (mm) |    |    |    |    |    |     |     | Screw<br>H | Weight<br>kg |
|--------------|--------------|----------|-----------------|----|----|----|----|----|-----|-----|------------|--------------|
|              |              |          | Ø A             | B  | C  | D  | E  | F  | G   | T   |            |              |
| 09104908*    | VWBG-V 0.3   | 0.3      | 8               | 31 | 29 | 30 | 28 | 13 | 36  | 76  | M8         | 0.18         |
| 09104910*    | VWBG-V 0.45  | 0.45     | 8               | 31 | 29 | 36 | 30 | 17 | 38  | 78  | M10        | 0.29         |
| 09104912*    | VWBG-V 0.6   | 0.6      | 10              | 49 | 35 | 42 | 36 | 21 | 47  | 107 | M12        | 0.41         |
| 09104914*    | VWBG-V 1.0   | 1.0      | 13              | 46 | 38 | 48 | 41 | 21 | 56  | 113 | M14        | 0.63         |
| 09104916*    | VWBG-V 1.3   | 1.3      | 13              | 46 | 38 | 48 | 41 | 25 | 56  | 113 | M16        | 0.69         |
| 09104918*    | VWBG-V 1.8   | 1.8      | 13              | 54 | 35 | 62 | 55 | 27 | 67  | 137 | M18        | 1.18         |
| 09104920*    | VWBG-V 2.0   | 2.0      | 13              | 54 | 35 | 62 | 55 | 33 | 67  | 137 | M20        | 1.42         |
| 09104924*    | VWBG-V 3.5   | 3.5      | 18              | 66 | 40 | 81 | 70 | 40 | 88  | 173 | M24        | 2.63         |
| 09104930*    | VWBG-V 5.0   | 5.0      | 22              | 90 | 50 | 99 | 85 | 50 | 106 | 221 | M30        | 5.09         |

\* Available on indent.



The VWBG-V Load Ring is a high tensile, approved suspension ring according EN1677 – 4.

- Loadable in any direction. Design factor 4:1.
- Bolts 100% electro-magnetic crack detection tested.
- Surface protection CORRUD-DT (20 times better than zinc plating).
- Turnable under load in vertical direction.
- Simple installation, just a thread hole is required.
- Surface: Ring pink powder coating. Housing: zinc plated.
- VWBG-V is also available with UNC imperial thread sizes and in variable bolt length.
- Manufactured in Germany.



• CAD drawings available upon request.



- Never exceed Manufacturer's Working Load Limit (WLL).
- Always inspect lifting points carefully before each use!

08

LIFTING POINTS  
& EYE BOLTS

# LIFTING & LASHING POINTS

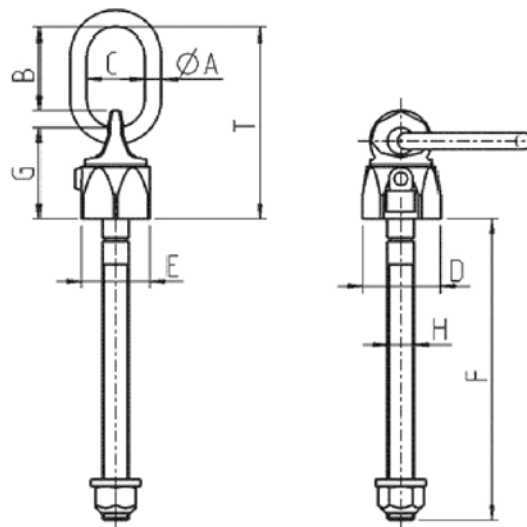
## RUD BOLT-ON

Swivel Load Ring Variable Bolt Length – VWBG-V VARIO



| Product Code | RUD Item No.      | WLL  | Dimensions (mm) |     |    |    |    |     |                  |     | Screw |
|--------------|-------------------|------|-----------------|-----|----|----|----|-----|------------------|-----|-------|
|              |                   |      | t               | Ø A | B  | C  | D  | E   | F <sub>max</sub> | G   |       |
| 09104908V*   | VWBG-V-VARIO 0.3  | 0.3  | 8               | 31  | 29 | 30 | 28 | 102 | 36               | 76  | M8    |
| 09104910V*   | VWBG-V-VARIO 0.45 | 0.45 | 8               | 31  | 29 | 36 | 30 | 122 | 38               | 78  | M10   |
| 09104912V*   | VWBG-V-VARIO 0.6  | 0.6  | 10              | 49  | 35 | 42 | 36 | 140 | 47               | 107 | M12   |
| 09104914V*   | VWBG-V-VARIO 1.0  | 1.0  | 13              | 46  | 38 | 48 | 41 | 65  | 56               | 114 | M14   |
| 09104916V*   | VWBG-V-VARIO 1.3  | 1.3  | 13              | 46  | 38 | 48 | 41 | 180 | 56               | 114 | M16   |
| 09104918V*   | VWBG-V-VARIO 1.8  | 1.8  | 13              | 54  | 35 | 62 | 55 | 83  | 67               | 137 | M18   |
| 09104920V*   | VWBG-V-VARIO 2.0  | 2.0  | 13              | 54  | 35 | 62 | 55 | 223 | 67               | 137 | M20   |
| 09104924V*   | VWBG-V-VARIO 3.5  | 3.5  | 18              | 66  | 40 | 81 | 70 | 255 | 88               | 173 | M24   |
| 09104930V*   | VWBG-V-VARIO 5.0  | 5.0  | 22              | 90  | 50 | 99 | 85 | 330 | 106              | 221 | M30   |

\* Available on indent.



Same as VWBG-V Swivel Load Rings detailed on previous page with variable bolt lengths. Refer Column F for maximum bolt length.

- Loadable in any direction. Design factor 4:1.
- Bolts 100% electro-magnetic crack detection tested.
- Surface protection CORRUD-DT (20 times better than zinc plating).
- Turnable under load in vertical direction.
- Simple installation, just a thread hole is required.
- Surface: Ring pink powder coating. Housing: zinc plated.
- VWBG-V VARIO is also available with UNC imperial thread sizes.
- Manufactured in Germany.



• CAD drawings available upon request.



- Never exceed Manufacturer's Working Load Limit (WLL).
- Always inspect lifting points carefully before each use!

# LIFTING & LASHING POINTS

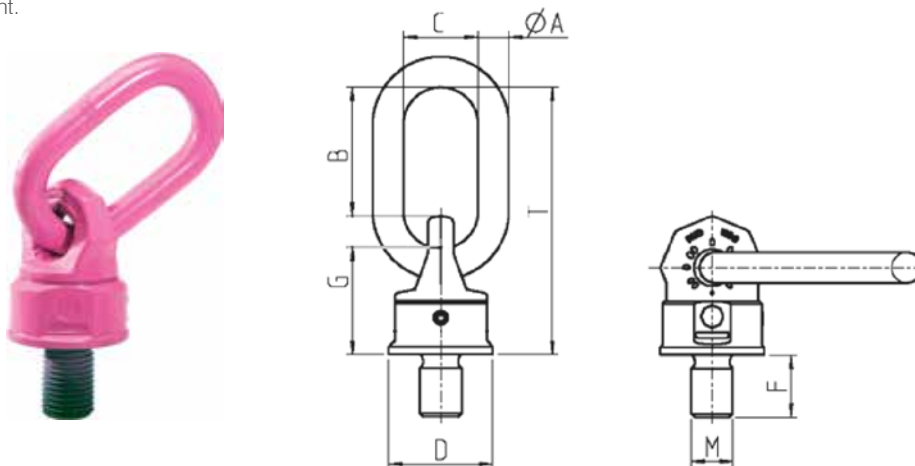
## RUD BOLT-ON

### Swivel Load Ring – VWBG



| Product Code | RUD Item No. | WLL  | Dimensions (mm) |     |     |     |     |     |     | Screw | Weight |
|--------------|--------------|------|-----------------|-----|-----|-----|-----|-----|-----|-------|--------|
|              |              | t    | Ø A             | B   | C   | D   | F   | G   | T   | M     | kg     |
| 09104940*    | VWBG 8       | 8.0  | 22              | 86  | 50  | 90  | 54  | 94  | 208 | M36   | 4.7    |
| 09104942*    | VWBG 12      | 12.0 | 26              | 111 | 65  | 98  | 63  | 96  | 235 | M42   | 6.1    |
| 09104948*    | VWBG 12      | 12.0 | 26              | 111 | 65  | 98  | 67  | 96  | 235 | M45   | 6.2    |
| 09104950*    | VWBG 13      | 13.0 | 26              | 111 | 65  | 98  | 68  | 96  | 235 | M48   | 6.3    |
| 09104956*    | VWBG 14      | 14.0 | 32              | 119 | 70  | 120 | 78  | 120 | 274 | M52   | 10.5   |
| 09104960*    | VWBG 16      | 16.0 | 32              | 119 | 70  | 120 | 84  | 120 | 274 | M56   | 10.7   |
| 09104964*    | VWBG 16      | 16.0 | 32              | 119 | 70  | 120 | 94  | 120 | 274 | M64   | 11.4   |
| 09104972*    | VWBG 31.5    | 31.5 | 46              | 130 | 90  | 170 | 108 | 159 | 338 | M72   | 29.9   |
| 09104980*    | VWBG 35      | 35.0 | 46              | 130 | 90  | 170 | 120 | 159 | 338 | M80   | 31.2   |
| 09104985*    | VWBG 40      | 40.0 | 46              | 170 | 110 | 170 | 135 | 159 | 378 | M90   | 34.4   |

\* Available on indent.



The VWBG Load Ring is a high tensile, approved suspension ring according EN1677 – 4.

- Simple installation, just a thread hole is required.
- Loadable in any direction. Design factor 4:1.
- Bolts 100% electro-magnetic crack detection tested.
- Surface protection CORRUD-DT (20 times better than zinc plating).
- Turnable under load in vertical direction.
- Surface: Pink powder coating.
- VWBG is also available with UNC imperial thread sizes and in variable bolt length.
- Manufactured in Germany.



• CAD drawings available upon request.



- Never exceed Manufacturer's Working Load Limit (WLL).
- Always inspect lifting points carefully before each use!



# LIFTING & LASHING POINTS

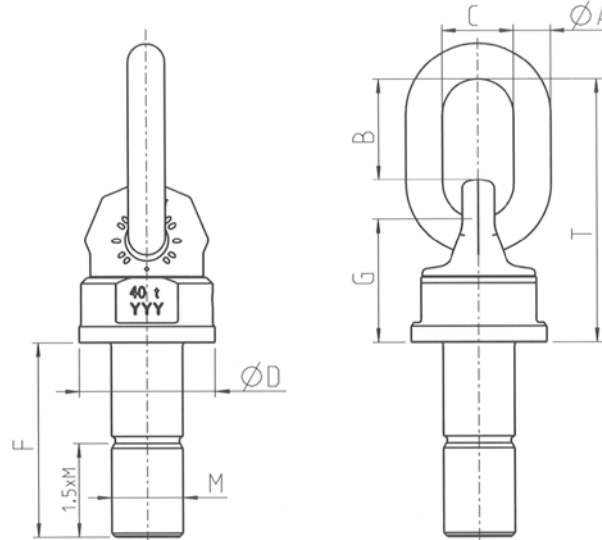
## RUD BOLT-ON

Swivel Load Ring Variable Bolt Length – VWBG VARIO



| Product Code | RUD Item No.    | WLL<br>t | Dimensions (mm) |     |     |     |        |     |     | Screw |  |
|--------------|-----------------|----------|-----------------|-----|-----|-----|--------|-----|-----|-------|--|
|              |                 |          | Ø A             | B   | C   | D   | F      | G   | T   | M     |  |
| 09104938V*   | VWBG-VARIO 6    | 6        | 22              | 86  | 50  | 90  | 33-300 | 94  | 208 | M33   |  |
| 09104940V*   | VWBG-VARIO 8    | 8        | 22              | 86  | 50  | 90  | 36-300 | 94  | 208 | M36   |  |
| 09104942V*   | VWBG-VARIO 12   | 12       | 26              | 111 | 65  | 98  | 42-300 | 96  | 235 | M42   |  |
| 09104950V*   | VWBG-VARIO 13   | 13       | 26              | 111 | 65  | 98  | 48-300 | 96  | 235 | M48   |  |
| 09104960V*   | VWBG-VARIO 16   | 16       | 32              | 119 | 70  | 120 | 56-300 | 120 | 274 | M56   |  |
| 09104964V*   | VWBG-VARIO 16   | 16       | 32              | 119 | 70  | 120 | 64-300 | 120 | 274 | M64   |  |
| 09104972V*   | VWBG-VARIO 31.5 | 31.5     | 46              | 130 | 90  | 170 | 72-300 | 159 | 338 | M72   |  |
| 09104980V*   | VWBG-VARIO 35   | 35       | 46              | 130 | 90  | 170 | 80-300 | 159 | 338 | M80   |  |
| 09104985V*   | VWBG-VARIO 40   | 40       | 46              | 170 | 110 | 170 | 90-300 | 159 | 378 | M90   |  |

\* Available on indent.



The VWBG VARIO Load Ring is a high tensile, approved suspension ring according EN1677 – 4.

- Simple installation, just a thread hole is required.
- Loadable in any direction. Design factor 4:1.
- Bolts 100% electro-magnetic crack detection tested.
- Surface protection CORRUD-DT (20 times better than zinc plating).
- Turnable under load in vertical direction.
- Surface: Pink powder coating.
- VWBG VARIO is also available with UNC imperial thread sizes.
- Manufactured in Germany.



• CAD drawings available upon request.



- Never exceed Manufacturer's Working Load Limit (WLL).
- Always inspect lifting points carefully before each use!

# LIFTING & LASHING POINTS

## RUD BOLT-ON

PowerPoint® – PP-S with Hook

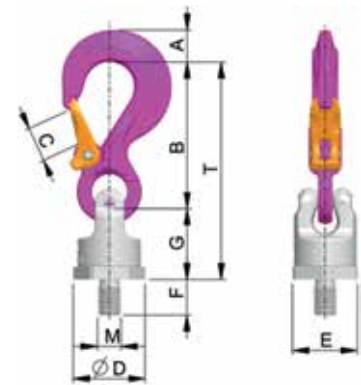


| Product Code |            | RUD Item No. | WLL        | Torque | Dimensions (mm) |     |     |    |     |    |    |        |                       |                    | N. W. |
|--------------|------------|--------------|------------|--------|-----------------|-----|-----|----|-----|----|----|--------|-----------------------|--------------------|-------|
| Standard     | Vario      |              |            |        | t               | Nm  | A   | B  | T   | C  | D  | E      | F <sub>Standard</sub> | F <sub>Vario</sub> |       |
| 09104851*    | 09104851V* | PP-S M12     | 0.63       | 10     | 13              | 75  | 116 | 18 | 40  | 36 | 18 | 19-145 | 41                    | 12                 | 0.4   |
| 09104852*    | 09104852V* | PP-S M16     | 1.5        | 30     | 20              | 97  | 147 | 25 | 46  | 41 | 25 | 26-180 | 50                    | 16                 | 1.0   |
| 09104853*    | 09104853V* | PP-S M20     | 2.5        | 70     | 28              | 126 | 187 | 30 | 61  | 55 | 30 | 31-200 | 61                    | 20                 | 1.7   |
| 09104854*    | 09104854V* | PP-S M24     | 4.0        | 150    | 36              | 150 | 227 | 35 | 78  | 70 | 36 | 37-255 | 77                    | 24                 | 3.5   |
| 09104855*    | 09104855V* | PP-S M30     | 5.0 (6.7)  | 225    | 37              | 174 | 267 | 40 | 95  | 85 | 45 | 46-330 | 93                    | 30                 | 7.2   |
| 09104856*    | 09104856V* | PP-S M36     | 8.0 (10.0) | 410    | 49              | 208 | 310 | 48 | 100 | 90 | 54 | 55-300 | 102                   | 36                 | 9.2   |

( ) Increased WLL in axial load direction. \* Available on indent.

The PowerPoint® PP-S range offers a functional, compact innovative design. The range is 100% electro-magnetic crack tested and painted in the unique durable RUD pink powder coated finish.

- Manufactured using high tensile CrNiMo steel.
- Offers a full WLL in any direction with 4:1 lifting design factor.
- Complies with EN1677.
- Double ball bearing for free turning and soft winding:  
360° swiveling / 180° pivoting.
- Maximum load limit at smallest thread diameter.
- Variable thread lengths available – refer column F (Vario) above.
- Also available with UNC threads.
- Manufactured in Germany.



### PP-S Working Load Limits – G in Tonnes

| Lifting Mode |              | Single Leg |      | 2, 3 or 4 Legs |      |      |
|--------------|--------------|------------|------|----------------|------|------|
|              |              |            |      |                |      |      |
| Product Code | RUD Item No. |            |      | 60°            | 90°  | 120° |
| 09104851     | PPS M12      | 0.63       | 0.63 | 1.1            | 0.89 | 0.63 |
| 09104852     | PPS M16      | 1.5        | 1.5  | 2.6            | 2.1  | 1.5  |
| 09104853     | PPS M20      | 2.5        | 2.5  | 4.3            | 3.5  | 2.5  |
| 09104854     | PPS M24      | 4.0        | 4.0  | 6.9            | 5.6  | 4.0  |
| 09104855     | PPS M30      | 6.7        | 5.0  | 8.6            | 7.0  | 5.0  |
| 09104856     | PPS M36      | 10.0       | 8.0  | 13.8           | 11.3 | 8.0  |



08

LIFTING POINTS & EYE BOLTS

• CAD drawings available upon request.

• Never exceed Manufacturer's Working Load Limit (WLL).  
• Always inspect lifting points carefully before each use!

# LIFTING & LASHING POINTS

## RUD BOLT-ON

PowerPoint® – PP-B with Lifting Ring

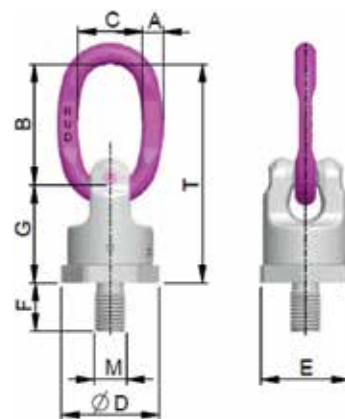


| Product Code |            | RUD Item No. | WLL        | Torque | Dimensions (mm) |     |     |    |     |    |    |        |                       |                    | N. W. |
|--------------|------------|--------------|------------|--------|-----------------|-----|-----|----|-----|----|----|--------|-----------------------|--------------------|-------|
| Standard     | Vario      |              |            |        | t               | Nm  | A   | B  | T   | C  | D  | E      | F <sub>Standard</sub> | F <sub>Vario</sub> |       |
| 09104861*    | 09104861V* | PP-B M12     | 0.63       | 10     | 9               | 65  | 105 | 35 | 40  | 36 | 18 | 19-145 | 41                    | 12                 | 0.35  |
| 09104862*    | 09104862V* | PP-B M16     | 1.5        | 30     | 11              | 65  | 115 | 35 | 46  | 41 | 25 | 26-180 | 50                    | 16                 | 0.6   |
| 09104863*    | 09104863V* | PP-B M20     | 2.5        | 70     | 13              | 74  | 135 | 40 | 61  | 55 | 30 | 31-200 | 61                    | 20                 | 1.1   |
| 09104864*    | 09104864V* | PP-B M24     | 4.0        | 150    | 16              | 95  | 172 | 45 | 78  | 70 | 36 | 37-255 | 77                    | 24                 | 2.4   |
| 09104865*    | 09104865V* | PP-B M30     | 5.0 (6.7)  | 225    | 19              | 130 | 223 | 60 | 95  | 85 | 45 | 46-330 | 93                    | 30                 | 5.2   |
| 09104866*    | 09104866V* | PP-B M36     | 8.0 (10.0) | 410    | 24              | 140 | 242 | 65 | 100 | 90 | 54 | 55-300 | 102                   | 36                 | 6.3   |

( ) Increased WLL in axial load direction. \* Available on indent.

The PowerPoint® PP-B range offers a functional, compact innovative design. The range is 100% electro-magnetic crack tested and painted in the unique durable RUD pink powder coated finish.

- Manufactured using high tensile CrNiMo steel.
- Offers a full WLL in any direction with 4:1 lifting design factor.
- Complies with EN1677.
- Double ball bearing for free turning and soft winding:  
360° swiveling / 180° pivoting.
- Maximum load limit at smallest thread diameter.
- Variable thread lengths available – refer column F (Vario) above.
- Also available with UNC threads.
- Manufactured in Germany.



08 LIFTING POINTS & EYE BOLTS

### PP-B Working Load Limits – G in Tonnes

| Lifting Mode |              | Single Leg |      | 2, 3 or 4 Legs |      |      |
|--------------|--------------|------------|------|----------------|------|------|
|              |              |            |      |                | 60°  | 90°  |
| Product Code | RUD Item No. |            |      |                |      |      |
| 09104861     | PP-B M12     | 0.63       | 0.63 | 1.1            | 0.89 | 0.63 |
| 09104862     | PP-B M16     | 1.5        | 1.5  | 2.6            | 2.1  | 1.5  |
| 09104863     | PP-B M20     | 2.5        | 2.5  | 4.3            | 3.5  | 2.5  |
| 09104864     | PP-B M24     | 4.0        | 4.0  | 6.9            | 5.6  | 4.0  |
| 09104865     | PP-B M30     | 6.7        | 5.0  | 8.6            | 7.0  | 5.0  |
| 09104866     | PP-B M36     | 10.0       | 8.0  | 13.8           | 11.3 | 8.0  |



• CAD drawings available upon request.

• Never exceed Manufacturer's Working Load Limit (WLL).  
• Always inspect lifting points carefully before each use!

# LIFTING & LASHING POINTS

## RUD BOLT-ON

PowerPoint® – PP-VIP with Chain Clevis

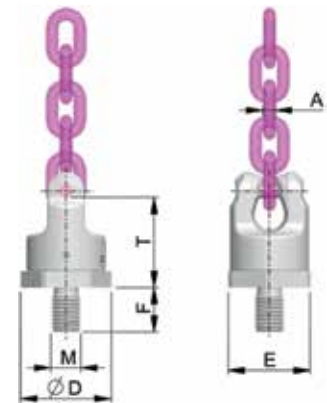


| Product Code |            | RUD Item No. | WLL        | Torque | Dimensions (mm) |     |     |    |    |        |                       | N. W. |
|--------------|------------|--------------|------------|--------|-----------------|-----|-----|----|----|--------|-----------------------|-------|
| Standard     | Vario      |              |            |        | t               | Nm  | A   | T  | D  | E      | F <sub>Standard</sub> |       |
| 09104871*    | 09104871V* | PP-VIP M12   | 0.63       | 10     | 4               | 41  | 40  | 36 | 18 | 19-145 | 12                    | 0.25  |
| 09104872*    | 09104872V* | PP-VIP M16   | 1.5        | 30     | 6               | 50  | 46  | 41 | 25 | 26-180 | 16                    | 0.45  |
| 09104873*    | 09104873V* | PP-VIP M20   | 2.5        | 70     | 8               | 61  | 61  | 55 | 30 | 31-200 | 20                    | 0.95  |
| 09104874*    | 09104874V* | PP-VIP M24   | 4.0        | 150    | 10              | 77  | 78  | 70 | 36 | 37-255 | 24                    | 2.2   |
| 09104875*    | 09104875V* | PP-VIP M30   | 5.0 (6.7)  | 225    | 13              | 93  | 95  | 85 | 45 | 46-330 | 30                    | 3.5   |
| 09104876*    | 09104876V* | PP-VIP M36   | 8.0 (10.0) | 410    | 16              | 102 | 100 | 90 | 54 | 55-300 | 36                    | 5.2   |

( ) Increased WLL in axial load direction. \* Available on indent.

The PowerPoint® PP-VIP range offers a functional, compact innovative design. The range is 100% electro-magnetic crack tested and painted in the unique durable RUD pink powder coated finish.

- Manufactured using high tensile CrNiMo steel.
- Offers a full WLL in any direction with 4:1 lifting design factor.
- Complies with EN1677.
- Double ball bearing for free turning and soft winding:  
360° swiveling / 180° pivoting.
- Maximum load limit at smallest thread diameter.
- Variable thread lengths available – refer column F (Vario) above.
- Also available with UNC threads.
- Manufactured in Germany.



### PP-VIP Working Load Limits – G in Tonnes

| Lifting Mode |              | Single Leg |      | 2, 3 or 4 Legs |      |      |
|--------------|--------------|------------|------|----------------|------|------|
|              |              |            |      |                |      |      |
| Product Code | RUD Item No. |            |      | 60°            | 90°  | 120° |
| 09104871     | PP-VIP M12   | 0.63       | 0.63 | 1.1            | 0.89 | 0.63 |
| 09104872     | PP-VIP M16   | 1.5        | 1.5  | 2.6            | 2.1  | 1.5  |
| 09104873     | PP-VIP M20   | 2.5        | 2.5  | 4.3            | 3.5  | 2.5  |
| 09104874     | PP-VIP M24   | 4.0        | 4.0  | 6.9            | 5.6  | 4.0  |
| 09104875     | PP-VIP M30   | 6.7        | 5.0  | 8.6            | 7.0  | 5.0  |
| 09104876     | PP-VIP M36   | 10.0       | 8.0  | 13.8           | 11.3 | 8.0  |



08

LIFTING POINTS & EYE BOLTS



• CAD drawings available upon request.



- Never exceed Manufacturer's Working Load Limit (WLL).
- Always inspect lifting points carefully before each use!
- RUD warranty applies when used with RUD VIP Grade 100 Chain.

# LIFTING & LASHING POINTS

## RUD BOLT-ON

### PowerPoint® Vario Models

All RUD PowerPoint® swivelling lifting points are available with variable bolt lengths.

#### PowerPoint® – Vario Thread Table



| Thread Size | Vario Thread Length | Standard Thread Length |
|-------------|---------------------|------------------------|
| Metric      | Min – Max (mm)      | mm                     |
| M12         | 19 – 145            | 18                     |
| M16         | 26 – 180            | 25                     |
| M20         | 31 – 200            | 30                     |
| M24         | 37 – 255            | 36                     |
| M30         | 46 – 330            | 45                     |
| M36         | 56 – 300            | 54                     |



PP-S Vario

PP-B Vario

PP-VIP Vario

The PowerPoint® PP-VIP range offers a functional, compact innovative design. The range is 100% electro-magnetic crack tested and painted in the unique durable RUD pink powder coated finish. Easy identification of Working Load Limit.

Can be turned under full load even in a 90° position from the bolt centre line. Fast amortization because of easy handling. Warranty can only be guaranteed with originally assembled RUD components and chains.

Genuine RUD bolts supplied with washer and 100% crack detected nut.

- Manufactured using high tensile CrNiMo steel.
- Offers a full WLL in any direction with 4:1 lifting design factor.
- Complies with EN1677.
- Double ball bearing for free turning and soft winding: 360° swivelling / 180° pivoting.
- Maximum load limit at smallest thread diameter.
- Also available with UNC threads.
- Manufactured in Germany.



• CAD drawings available upon request.



- Never exceed Manufacturer's Working Load Limit (WLL).
- Always inspect lifting points carefully before each use!

08

LIFTING POINTS  
& EYE BOLTS

# EYE BOLTS

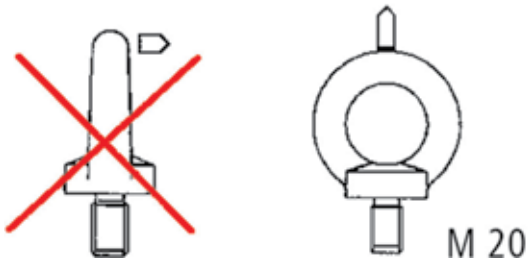
## RUD STARPOINT EYE BOLTS

**Starpoint Eye Bolt VRS-F** The superior alternative to conventional DIN580 or BS4278 eye bolts.

– COMPARISON –

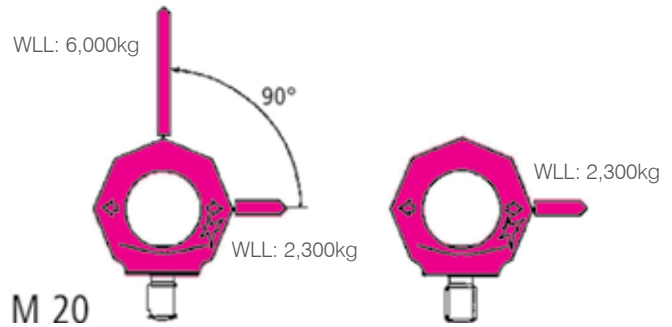
Eye Bolt BS4278-M20  
AS2317-M20

WLL: 1,600kg



Starpoint VRS-M20

WLL: 6,000kg



Starpoint Eye Bolts include an integrated installation tool.

Simply engage the tool into the hexagon socket screw – tighten by hand – disengage tool – done!



08

LIFTING POINTS  
& EYE BOLTS



The new generation of eye bolts from RUD in Germany.  
RUD Starpoints: The perfect solution to eliminate unsafe eye bolts.

# EYE BOLTS

## RUD STARPOINT EYE BOLTS

Starpoint Eye Bolt – VRS-F

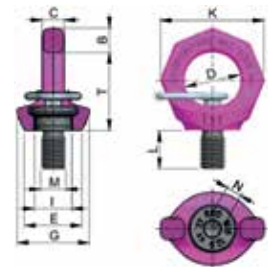


| Product Code | RUD Item No. | WLL  | Dimensions (mm) |     |    |    |     |     |      |     |    |    |    | N. W. |
|--------------|--------------|------|-----------------|-----|----|----|-----|-----|------|-----|----|----|----|-------|
|              |              | t    | B               | T   | C  | D  | E   | G   | I    | K   | L  | M  | N  | kg    |
| 09104508     | VRS-F M8     | 0.4  | 11              | 34  | 9  | 25 | 25  | 31  | 16.3 | 47  | 12 | 8  | 6  | 0.1   |
| 09104510     | VRS-F M10    | 0.4  | 11              | 34  | 9  | 25 | 25  | 31  | 16.3 | 47  | 15 | 10 | 6  | 0.1   |
| 09104512     | VRS-F M12    | 0.75 | 13              | 42  | 10 | 30 | 30  | 38  | 19.8 | 56  | 18 | 12 | 8  | 0.2   |
| 09104516     | VRS-F M16    | 1.5  | 15              | 49  | 14 | 35 | 35  | 41  | 23.9 | 65  | 24 | 16 | 10 | 0.3   |
| 09104520     | VRS-F M20    | 2.3  | 17              | 57  | 16 | 40 | 40  | 50  | 29.6 | 75  | 30 | 20 | 12 | 0.5   |
| 09104524     | VRS-F M24    | 3.2  | 21              | 69  | 19 | 49 | 50  | 60  | 35.5 | 90  | 36 | 24 | 14 | 0.9   |
| 09104530     | VRS-F M30    | 4.5  | 26              | 86  | 24 | 60 | 66  | 75  | 44.5 | 112 | 45 | 30 | 17 | 1.7   |
| 09104536*    | VRS-F M36    | 7.0  | 32              | 103 | 29 | 75 | 75  | 90  | 52.8 | 135 | 54 | 36 | 22 | 2.9   |
| 09104542*    | VRS-F M42    | 9.0  | 38              | 120 | 34 | 82 | 85  | 105 | 61.5 | 158 | 63 | 42 | 24 | 4.6   |
| 09104548*    | VRS-F M48    | 12.0 | 43              | 137 | 38 | 94 | 100 | 120 | 70.4 | 180 | 72 | 48 | 27 | 7.0   |

\* Available on indent.

The STARPOINT Eye Bolt can be adjusted to the direction of pull allowing significantly higher load capacities than standard DIN580 eye bolts.

- Manufactured using high tensile CrNiMo steel.
- Complies with EN1677.
- Side loading permissible when adjusted to the correct plane.
- Grade 10.9 metric coarse pitch thread.
- Manufactured in Germany.



### VRS-F Working Load Limits – G in Tonnes

| Lifting Mode |              | Single Leg |      | 2, 3 or 4 Legs |      |      |
|--------------|--------------|------------|------|----------------|------|------|
|              |              |            |      |                | 60°  | 90°  |
| Product Code | RUD Item No. |            |      |                |      |      |
| 09104508     | VRS-F M8     | 1.0        | 0.3  | 0.69           | 0.56 | 0.4  |
| 09104510     | VRS-F M10    | 1.0        | 0.4  | 0.69           | 0.56 | 0.4  |
| 09104512     | VRS-F M12    | 2.0        | 0.75 | 1.4            | 1.0  | 0.8  |
| 09104516     | VRS-F M16    | 4.0        | 1.5  | 2.6            | 2.1  | 1.5  |
| 09104520     | VRS-F M20    | 6.0        | 2.3  | 4.0            | 3.2  | 2.3  |
| 09104524     | VRS-F M24    | 8.0        | 3.2  | 5.5            | 4.5  | 3.2  |
| 09104530     | VRS-F M30    | 12.0       | 4.5  | 7.8            | 6.3  | 4.5  |
| 09104536     | VRS-F M36    | 16.0       | 7.0  | 12.1           | 9.8  | 7.0  |
| 09104542     | VRS-F M42    | 24.0       | 9.0  | 15.6           | 12.6 | 9.0  |
| 09104548     | VRS-F M48    | 32.0       | 12.0 | 20.8           | 16.8 | 12.0 |



Fully adjustable to load direction.



• CAD drawings available upon request.



- Never exceed Manufacturer's Working Load Limit (WLL).
- Always inspect lifting points carefully before each use!

# EYE BOLTS

## RUD STARPOINT EYE BOLTS

### Starpoint Eye Bolt – VRS-F Vario

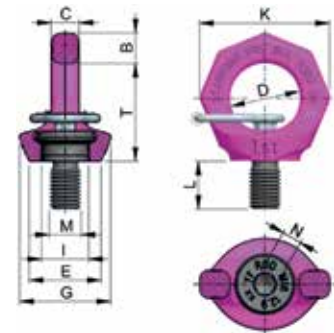


| Product Code | RUD Item No.    | WLL  | Dimensions (mm) |    |     |    |    |    |      |     |        |    |    | N. W. |
|--------------|-----------------|------|-----------------|----|-----|----|----|----|------|-----|--------|----|----|-------|
|              |                 | t    | B               | T  | C   | D  | E  | G  | I    | K   | L      | M  | N  | kg    |
| 09104510V*   | VRS-F Vario M10 | 0.4  | 11              | 34 | 8.5 | 25 | 25 | 32 | 16   | 47  | 16-70  | 10 | 6  | 0.15  |
| 09104512V*   | VRS-F Vario M12 | 0.75 | 13              | 42 | 10  | 30 | 30 | 34 | 20   | 56  | 18-150 | 12 | 8  | 0.28  |
| 09104516V*   | VRS-F Vario M16 | 1.5  | 15              | 49 | 14  | 35 | 35 | 35 | 23.5 | 65  | 16-120 | 16 | 10 | 0.35  |
| 09104520V*   | VRS-F Vario M20 | 2.3  | 17              | 57 | 16  | 40 | 42 | 50 | 29   | 75  | 30-160 | 20 | 12 | 0.55  |
| 09104524V*   | VRS-F Vario M24 | 3.2  | 21              | 70 | 19  | 48 | 50 | 60 | 35   | 90  | 36-140 | 24 | 14 | 0.9   |
| 09104530V*   | VRS-F Vario M30 | 4.5  | 26              | 86 | 24  | 60 | 60 | 75 | 44   | 112 | 45-190 | 30 | 17 | 1.9   |

\* Available on indent.

The STARPOINT Vario Eye Bolt can be adjusted to the direction of pull allowing significantly higher load capacities than standard DIN580 eye bolts.




- Manufactured using high tensile CrNiMo steel.
- Complies with EN1677.
- 4:1 design factor on Working Load Limit.
- 100% Electro-magnetic crack detection tested.
- Side loading permissible when adjusted to the correct plane.
- Class 10.9 metric coarse pitch thread.
- Countersunk hexagon socket screw held captive.
- Shape: Star (clearly distinguishable from other collared eyebolts).
- Colour: Pink powder coated.
- Manufactured in Germany.



08

LIFTING POINTS & EYE BOLTS

### VRS-F Vario Working Load Limits – G in Tonnes

| Lifting Mode |                 | Single Leg  |   | 2, 3 or 4 Legs  |      |     |
|--------------|-----------------|---|---|---|------|-----|
|              |                 |  G |  G |  G | 60°  | 90° |
| Product Code | RUD Item No.    |   |   |   |      |     |
| 09104510V    | VRS-F Vario M10 | 1.0   | 0.4   | 0.69  | 0.56 | 0.4 |
| 09104512V    | VRS-F Vario M12 | 2.0   | 0.75  | 1.4   | 1.0  | 0.8 |
| 09104516V    | VRS-F Vario M16 | 4.0   | 1.5   | 2.6   | 2.1  | 1.5 |
| 09104520V    | VRS-F Vario M20 | 6.0   | 2.3   | 4.0   | 3.2  | 2.3 |
| 09104524V    | VRS-F Vario M24 | 8.0   | 3.2   | 5.5   | 4.5  | 3.2 |
| 09104530V    | VRS-F Vario M30 | 12.0  | 4.5   | 7.8   | 6.3  | 4.5 |



Fully adjustable to load direction.



• CAD drawings available upon request.



- Never exceed Manufacturer's Working Load Limit (WLL).
- Always inspect lifting points carefully before each use!



# EYE BOLTS

## RUD STAINLESS STEEL EYE BOLTS

### Starpoint Eye Bolt – Stainless Steel



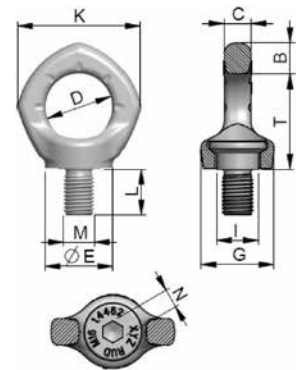
| Product Code | RUD Item No.  | WLL | Dimensions (mm) |    |    |    |      |      |      |    |    |    |    | N. W. |
|--------------|---------------|-----|-----------------|----|----|----|------|------|------|----|----|----|----|-------|
|              |               | t   | B               | T  | C  | D  | E    | G    | I    | K  | L  | M  | N  | kg    |
| 09104552*    | Inox Star M12 | 0.5 | 14              | 43 | 10 | 30 | 30   | 32   | 20   | 56 | 18 | 12 | 8  | 0.2   |
| 09104554*    | Inox Star M16 | 1.0 | 16              | 50 | 14 | 35 | 35.5 | 38   | 23.5 | 65 | 24 | 16 | 10 | 0.3   |
| 09104556*    | Inox Star M20 | 2.0 | 19              | 57 | 16 | 40 | 41   | 46.5 | 29   | 74 | 30 | 20 | 12 | 0.5   |
| 09104558*    | Inox Star M24 | 2.5 | 24              | 70 | 19 | 48 | 50   | 56   | 35   | 92 | 36 | 24 | 14 | 0.9   |

\* Available on indent.

The INOX-STAR Eye Bolt offers a functional, compact innovative design. The range is 100% electro-magnetic crack tested and it's pentagonal shape makes it significantly different to the DIN 580 eyebolt.

Manufactured from stainless steel – 50% higher loading than DIN with no directional restrictions.

- 100% electro-magnetic crack detection tested.
- Turns through 360°. Can be set in the direction of the load.
- 4 :1 design factor.
- Forged eye body and screw with captive, mounted bolt.
- Pentagon shape is clearly distinguishable from other eye bolts.
- Manufactured in Germany.



### VRM Working Load Limits – G in Tonnes

| Lifting Mode |               | Single Leg |     | 2, 3 or 4 Legs |      |     |
|--------------|---------------|------------|-----|----------------|------|-----|
|              |               |            |     |                | 60°  | 90° |
| Product Code | RUD Item No.  | G          | G   | G              |      |     |
| 09104552     | Inox Star M12 | 1.2        | 0.5 | 0.87           | 0.71 | 0.5 |
| 09104554     | Inox Star M16 | 2.4        | 1.0 | 1.7            | 1.4  | 1.0 |
| 09104556     | Inox Star M20 | 3.6        | 2.0 | 3.5            | 2.8  | 2.0 |
| 09104558     | Inox Star M24 | 5.2        | 2.5 | 4.3            | 3.5  | 2.5 |



| RUD Item No.  | Torque |
|---------------|--------|
| Inox Star M12 | 25 Nm  |
| Inox Star M16 | 60 Nm  |
| Inox Star M20 | 115 Nm |
| Inox Star M24 | 190 Nm |

• CAD drawings available upon request.

• For permanent installation tighten to torque specified in the table above.  
• For a temporary assembly, hand tightening with an allen key is sufficient.

• Never exceed Manufacturer's Working Load Limit (WLL).  
• Always inspect lifting points carefully before each use!

# EYE BOLTS

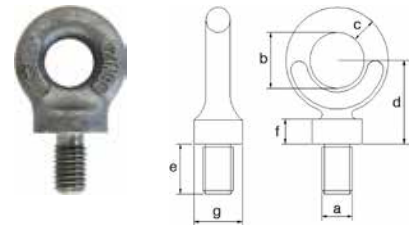
## AS2317 COLLARED EYE BOLTS

Self Colour – Metric Thread (M8 – M30)

| Product Code | WLL * | Thread | Dimensions (mm) |    |    |    |    |    |    |
|--------------|-------|--------|-----------------|----|----|----|----|----|----|
|              | t     |        | a               | b  | c  | d  | e  | f  | g  |
| 02102508     | 0.15  | M8     | 8               | 12 | 9  | 27 | 18 | 5  | 17 |
| 02102510     | 0.25  | M10    | 10              | 14 | 9  | 27 | 18 | 5  | 17 |
| 02102512     | 0.40  | M12    | 12              | 18 | 9  | 27 | 18 | 5  | 17 |
| 02102516     | 0.80  | M16    | 16              | 24 | 11 | 34 | 23 | 6  | 23 |
| 02102520     | 1.60  | M20    | 20              | 29 | 15 | 47 | 32 | 9  | 32 |
| 02102522     | 2.00  | M22    | 22              | 33 | 17 | 53 | 35 | 14 | 35 |
| 02102524     | 2.50  | M24    | 24              | 38 | 19 | 60 | 40 | 12 | 40 |
| 02102530     | 4.00  | M30    | 30              | 48 | 28 | 65 | 52 | 16 | 71 |

\* WLL shown relates to 0° (vertical) lift.

- Manufactured generally in conformance with AS2317.
- Test certificates available.
- Manufactured in China.

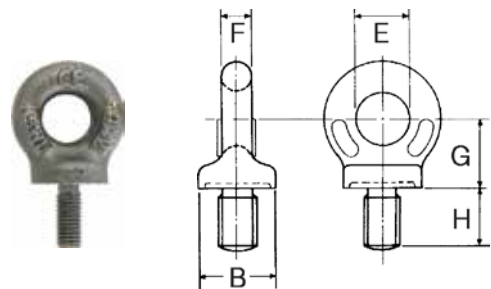


Self Colour – Imperial Thread (3/8" – 1.0")

| Product Code | WLL * | Thread | Dimensions (mm) |    |    |    |    |
|--------------|-------|--------|-----------------|----|----|----|----|
|              | t     | in     | B               | E  | F  | G  | H  |
| 02102009     | 0.25  | 3/8    | 22              | 15 | 9  | 20 | 18 |
| 02102013     | 0.40  | 1/2    | 29              | 20 | 12 | 26 | 23 |
| 02102016     | 0.80  | 5/8    | 36              | 24 | 14 | 32 | 28 |
| 02102019     | 1.60  | 3/4    | 45              | 30 | 18 | 40 | 35 |
| 02102022     | 2.00  | 7/8    | 52              | 35 | 21 | 46 | 40 |
| 02102026     | 2.50  | 1.0    | 58              | 39 | 23 | 52 | 46 |

\* WLL shown relates to 0° (vertical) lift.

- Manufactured generally in conformance with AS2317.
- Whitworth thread.
- Test certificates available.
- Manufactured in China.



• For WLL when used in pairs refer page 298.

• For Trunnion Lifting: The load taken by a single eyebolt should not exceed 25% of its marked WLL.

• Never exceed Manufacturer's Working Load Limit  
 • Always inspect eye bolts carefully before each use!  
 • Eye Bolts under 12mm are not recommended for lifting applications.

# EYE BOLTS

## BS4278 COLLARED EYE BOLTS

Self Colour – Metric Thread (M12 – M72)

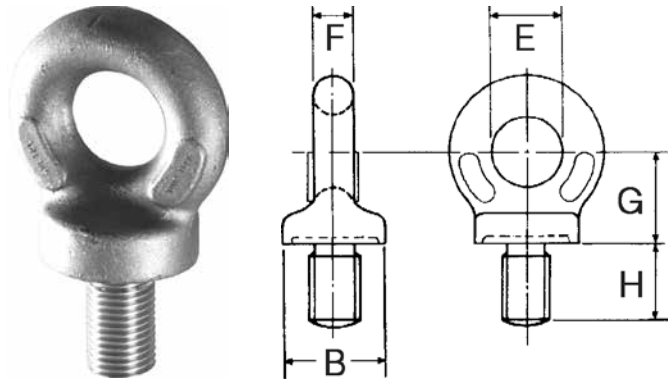


| Product Code | Harris Walton Item No. | WLL ** | Thread | Dimensions (mm) |     |    |     |     | Weight |
|--------------|------------------------|--------|--------|-----------------|-----|----|-----|-----|--------|
|              |                        | t      |        | B               | E   | F  | G   | H   | kg     |
| 07602M12     | HW410/1                | 0.4    | M12    | 22              | 15  | 9  | 20  | 18  | 0.07   |
| 07602M16     | HW410/2                | 0.8    | M16    | 29              | 20  | 12 | 26  | 23  | 0.16   |
| 07602M20     | HW410/4                | 1.6    | M20    | 40              | 27  | 16 | 36  | 32  | 0.44   |
| 07602M24     | HW410/6                | 2.5    | M24    | 52              | 35  | 21 | 46  | 40  | 0.85   |
| 07602M30     | HW410/8                | 4.0    | M30    | 65              | 44  | 26 | 58  | 51  | 1.66   |
| 07602M36     | HW410/10               | 6.3    | M36    | 81              | 54  | 32 | 72  | 63  | 3.17   |
| 07602M48     | HW410/12A              | 10.0   | M48    | 101             | 68  | 40 | 90  | 79  | 9.00   |
| 02102552*    | HW410/13               | 12.5   | M52    | 115             | 76  | 46 | 102 | 89  | 9.00   |
| 02102556*    | HW410/14               | 16.0   | M56    | 128             | 86  | 51 | 114 | 100 | 13.00  |
| 02102564*    | HW410/15               | 20.0   | M64    | 144             | 96  | 58 | 128 | 112 | 17.50  |
| 02102572*    | HW410/16A              | 25.0   | M72    | 162             | 108 | 65 | 144 | 126 | 31.00  |

\* Available on indent. \*\* WLL shown relates to 0° (vertical) lift.

Self Colour Metric Thread Collar Eye Bolts.  
Complies with BS4278:1984 Table 1.

- Hardened and tempered material.
- Metric coarse threads.
- Test certificates available.
- Manufactured in the U.K.



- For WLL when used in pairs refer page 298.
- Collared Eye Bolt Blanks: HW Eye bolt blanks allow us to supply eye bolts with some adjustment to shank length in sizes M30 through M48. For further information contact your nearest Cookes branch, Freephone 0508 274 366 or email [customerservices@bridoncookes.co.nz](mailto:customerservices@bridoncookes.co.nz).



- For Trunnion Lifting: The load taken by a single eyebolt should not exceed 25% of its marked WLL.



- Never exceed Manufacturer's Working Load Limit
- Always inspect eye bolts carefully before each use!

# EYE BOLTS

## BS4278 COLLARED EYE BOLTS

Self Colour – Imperial Thread (3/8" – 3.0")

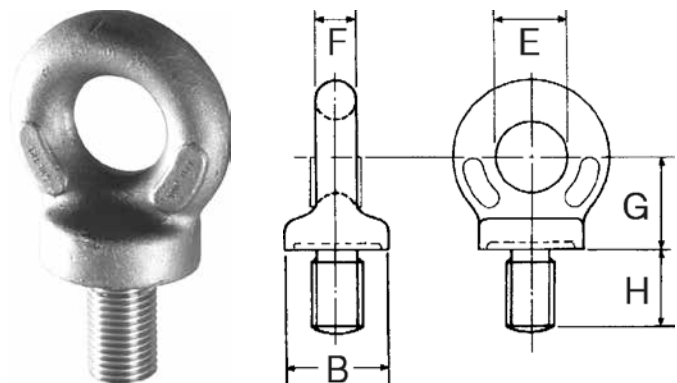



| Product Code | Harris Walton Item No. | WLL (t)**   | Thread | Dimensions (mm) |     |    |     |     | Weight |
|--------------|------------------------|-------------|--------|-----------------|-----|----|-----|-----|--------|
|              |                        | 0° vertical | in     | B               | E   | F  | G   | H   | kg     |
| 07600028     | HW440/1                | 0.25        | 3/8    | 22              | 15  | 9  | 20  | 18  | 0.08   |
| 07600030     | HW440/2                | 0.50        | 1/2    | 29              | 20  | 12 | 26  | 23  | 0.14   |
| 07600032     | HW440/3                | 0.90        | 5/8    | 36              | 24  | 14 | 32  | 28  | 0.38   |
| 07600034     | HW440/4                | 1.40        | 3/4    | 45              | 30  | 18 | 40  | 35  | 0.6.0  |
| 07600036     | HW440/5                | 2.00        | 7/8    | 52              | 35  | 21 | 46  | 40  | 0.78   |
| 07600038     | HW440/6                | 2.75        | 1.0    | 58              | 39  | 23 | 52  | 46  | 1.67   |
| 07600112     | HW440/7                | 3.50        | 1 1/8  | 65              | 44  | 26 | 58  | 51  | 1.78   |
| 07600125     | HW440/8                | 4.50        | 1 1/4  | 72              | 48  | 29 | 64  | 56  | 2.24   |
| 07600150     | HW440/9                | 6.50        | 1 1/2  | 81              | 54  | 32 | 72  | 63  | 3.17   |
| 07600175     | HW440/10               | 9.00        | 1 3/4  | 101             | 68  | 40 | 90  | 79  | 6.00   |
| 07600200     | HW440/11               | 12.00       | 2.0    | 115             | 76  | 46 | 102 | 89  | 9.00   |
| 02102057*    | HW440/12               | 15.00       | 2 1/4  | 128             | 86  | 51 | 114 | 100 | 15.00  |
| 02102064*    | HW440/13               | 20.00       | 2 1/2  | 144             | 96  | 58 | 128 | 112 | 18.20  |
| 02102075*    | HW440/14               | 30.00       | 3.0    | 172             | 114 | 67 | 153 | 133 | 30.40  |

\* Available on indent. \*\* WLL shown relates to 0° (vertical) lift.

Self Colour Metric Thread Collar Eye Bolts.  
Complies with BS4278:1984 Appendix 'A' Table 4.

- Hardened and tempered material.
- Whitworth thread.
- Test certificates available.
- Manufactured in the U.K.




 • For WLL when used in pairs refer page 298.  
 • Collared Eye Bolt Blanks: HW Eye bolt blanks allow us to supply special threads or some adjustment to eye bolt shank length. For further information contact your nearest Cookes branch, Freephone 0508 274 366 or email [customerservices@bridoncookes.co.nz](mailto:customerservices@bridoncookes.co.nz).


 • For Trunnion Lifting: The load taken by a single eyebolt should not exceed 25% of its marked WLL. 


 • Never exceed Manufacturer's Working Load Limit  
 • Always inspect eye bolts carefully before each use!

08 LIFTING POINTS & EYE BOLTS

# EYE BOLTS

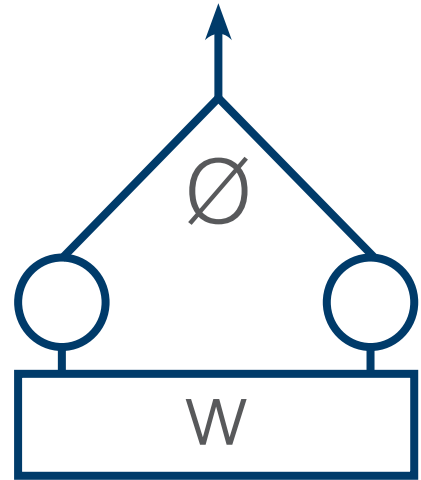
## WLL TABLE FOR COLLARED EYE BOLTS USED IN PAIRS

### WLL Chart for Inclined Lifting in Pairs

| WLL for a single eyebolt | Maximum Load 'W' to be lifted by a pair of eyebolts when the angle $\theta$ between the legs is: |          |           |
|--------------------------|--|----------|-----------|
|                          | 0° vertical  | 0° – 30° | 30° – 60° |
| 0.25                     | 0.32   | 0.20     | 0.13      |
| 0.40                     | 0.50   | 0.32     | 0.20      |
| 0.50                     | 0.63   | 0.40     | 0.25      |
| 0.80                     | 1.00   | 0.64     | 0.40      |
| 0.90                     | 1.13   | 0.72     | 0.45      |
| 1.40                     | 1.76   | 1.12     | 0.70      |
| 1.60                     | 2.00   | 1.25     | 0.80      |
| 2.00                     | 2.50   | 1.60     | 1.00      |
| 2.50                     | 3.20   | 2.00     | 1.25      |
| 2.75                     | 3.47   | 2.20     | 1.38      |
| 3.50                     | 4.41   | 2.80     | 1.75      |
| 4.00                     | 5.00   | 3.20     | 2.00      |
| 4.50                     | 5.67   | 3.60     | 2.25      |
| 5.00                     | 6.30   | 4.00     | 2.50      |
| 6.30                     | 8.00   | 5.00     | 3.2       |
| 6.50                     | 8.19   | 5.20     | 3.25      |
| 8.00                     | 10.00  | 6.30     | 4.00      |
| 9.00                     | 11.34  | 7.20     | 4.50      |
| 10.00                    | 12.50  | 8.00     | 5.00      |
| 12.00                    | 15.12  | 9.60     | 6.00      |
| 12.50                    | 16.00  | 10.00    | 6.30      |
| 15.00                    | 18.90  | 12.00    | 7.50      |
| 16.00                    | 20.00  | 12.50    | 8.00      |
| 20.00                    | 25.20  | 16.00    | 10.00     |
| 25.00                    | 32.00  | 20.00    | 12.50     |
| 30.00                    | 37.80  | 24.00    | 15.00     |

#### For Inclined Lifting:

Shown are the maximum recommended Working Load Limits (WLL) for British Standard Eye Bolts, imperial and metric threads, when used in pairs for inclined loading conditions.



**Note 1:** This chart covers only those collared eye bolts detailed on the preceding three pages.

**Note 2:** For Trunnion lifting the load taken by a single eye bolt should not exceed 25% of its marked WLL.

**Note 3:** Metric sizes under 12mm and imperial sizes under 3/8" are not recommended for lifting applications.



• Never exceed Manufacturer's Working Load Limit (WLL).

# EYE BOLTS

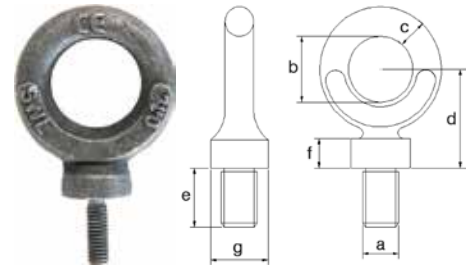
## DYNAMO EYE BOLTS

Self Colour Dynamo Pattern – Metric Thread

| Product Code | WLL  | Thread | Dimensions (mm) |    |    |    |    |    |    | Weight |
|--------------|------|--------|-----------------|----|----|----|----|----|----|--------|
|              | t    |        | a               | b  | c  | d  | e  | f  | g  | kg     |
| 02102206     | 0.10 | M6     | 6               | 22 | 9  | 27 | 18 | 5  | 17 | 0.07   |
| 02102208     | 0.15 | M8     | 8               | 22 | 9  | 27 | 18 | 5  | 17 | 0.07   |
| 02102210     | 0.25 | M10    | 10              | 22 | 9  | 27 | 18 | 5  | 17 | 0.07   |
| 02102212     | 0.32 | M12    | 12              | 22 | 9  | 27 | 18 | 5  | 17 | 0.07   |
| 02102216     | 0.63 | M16    | 16              | 29 | 11 | 34 | 23 | 6  | 23 | 0.14   |
| 02102220     | 1.25 | M20    | 20              | 40 | 15 | 47 | 32 | 9  | 32 | 0.40   |
| 02102224     | 2.00 | M24    | 24              | 51 | 19 | 60 | 40 | 12 | 40 | 0.80   |

Provides a larger eye diameter than conventional metric eye bolts.

- Generally in conformance with BS4278-3.
- Test certificates available.
- Manufactured in China.



## CERTIFIED STAINLESS STEEL EYE BOLTS

Stainless Steel Eye Bolts – with Longer Thread

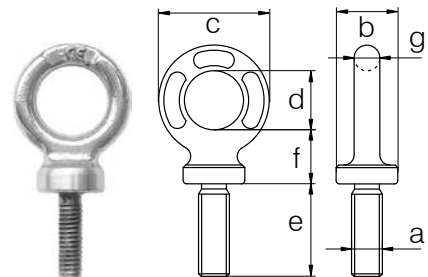
**EXCEL®**

| Product Code | Excel Item No. | WLL * | Dimensions (mm) |    |    |    |    |    |    | Weight |
|--------------|----------------|-------|-----------------|----|----|----|----|----|----|--------|
|              |                | t     | a               | b  | c  | d  | e  | f  | g  | kg     |
| 02487010     | AL10I          | 0.4   | M10 x 1.50      | 20 | 38 | 22 | 30 | 19 | 8  | 0.08   |
| 02487012     | AL12I          | 0.6   | M12 x 1.75      | 25 | 47 | 26 | 36 | 23 | 10 | 0.14   |
| 02487016     | AL16I          | 1.0   | M16 x 2.00      | 36 | 65 | 35 | 55 | 30 | 14 | 0.37   |
| 02487020     | AL20I          | 2.0   | M20 x 2.50      | 40 | 73 | 39 | 59 | 34 | 16 | 0.58   |
| 02487024     | AL24I          | 3.0   | M24 x 3.00      | 55 | 95 | 54 | 84 | 40 | 20 | 1.12   |

\* WLL applicable when angle of use is limited to maximum 30° from the axis.

Stainless Steel Eye Bolt. Longer thread length than DIN580 eye bolts (refer column e).

- Polished finish.
- AISI316L material.
- Tested and certified.
- 5:1 design factor.
- Manufactured in France.



**!** • Never exceed Manufacturer's Working Load Limit (WLL).  
• Eye Bolts under 12mm are not recommended for lifting applications.



• Do not use Dynamo Eye Bolts for inclined lift.  
• When using Dynamo Eye Bolts in pairs or groups, a spreader frame must always be used.

08  
LIFTING POINTS  
& EYE BOLTS

# EYE BOLTS

## SHOULDER EYE BOLTS

### Galvanised Shoulder Eye Bolts – Imperial Thread

| Product Code | Thread | MWL* | Shank Length |
|--------------|--------|------|--------------|
|              | Inches | T    | mm           |
| 02102660     | 1/4    | 0.20 | 122          |
| 02102662     | 5/16   | 0.35 | 138          |
| 02102666     | 3/8    | 0.50 | 151          |
| 0210270      | 1/2    | 1.00 | 184          |
| 02102674     | 1/2    | 1.00 | 284          |
| 02102678     | 5/8    | 1.50 | 295          |
| 02102682     | 5/8    | 1.50 | 395          |
| 02102686     | 3/4    | 2.30 | 320          |
| 02102690     | 3/4    | 2.30 | 420          |



Long shank eyebolt c-w washer and nut.

- Hot dip galvanised finish.
- Stamped with Maximum Working Load (refer below).
- Supplied with nut and washer.
- Manufactured in China.

• MWL: The Maximum Working Load is shown only for guidance in selecting an eye bolt with sufficient strength for the intended application.



• These eye bolts are stamped with a rating but with no batch number cross reference to their certificates, they are not suitable for lifting applications.

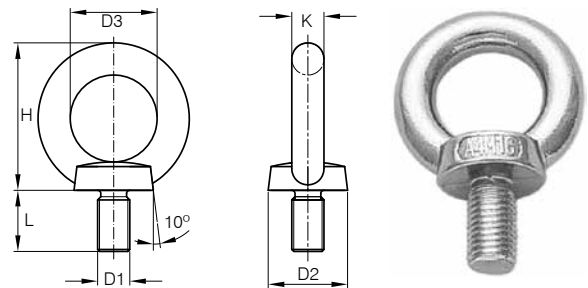
# EYE BOLTS

## UNCERTIFIED STAINLESS STEEL EYE BOLTS

Stainless Steel – Collared, Metric Thread

| Product Code | MWL * | Size | Dimensions (mm) |    |      |      |    |
|--------------|-------|------|-----------------|----|------|------|----|
|              | kg    | D1   | D2              | D3 | H    | L    | K  |
| 09568580     | 70    | M6   | 16              | 16 | 28.0 | 11.0 | 6  |
| 09568581     | 140   | M8   | 20              | 20 | 33.0 | 13.0 | 8  |
| 09568582     | 230   | M10  | 25              | 25 | 42.0 | 17.0 | 10 |
| 09568583     | 340   | M12  | 30              | 30 | 51.0 | 20.5 | 12 |
| 09568584     | 700   | M16  | 35              | 35 | 60.0 | 27.0 | 14 |
| 09568585     | 1,200 | M20  | 40              | 40 | 68.8 | 30.0 | 16 |

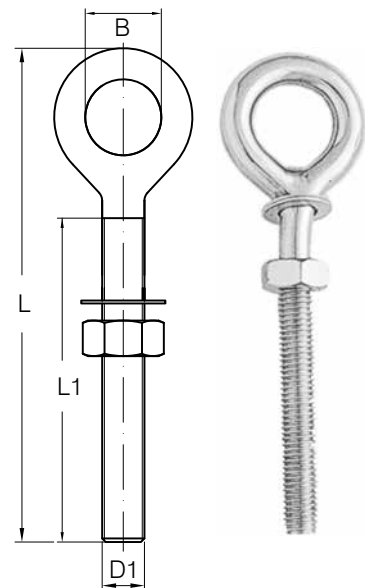
- DIN580 dimensions.
- AISI 316 Stainless Steel.
- Manufactured in China.



Stainless Steel Long Shank – Non-Collared, Metric Thread

| Product Code | MWL * | Size | Dimensions (mm) |    |    |
|--------------|-------|------|-----------------|----|----|
|              | kg    | D1   | L               | L1 | B  |
| 09568716     | 209   | M6   | 100             | 74 | 13 |
| 09568718     | 370   | M8   | 130             | 92 | 16 |
| 09568720     | 574   | M10  | 150             | 90 | 22 |

- AISI 316 Stainless Steel.
- Complete with nut and washer.
- Manufactured in China.



• MWL: The Maximum Working Load is shown only for guidance in selecting an eye bolt with sufficient strength for the intended application.



• Not suitable for lifting applications



# EYE NUTS

## RUD STARPOINT EYE NUTS

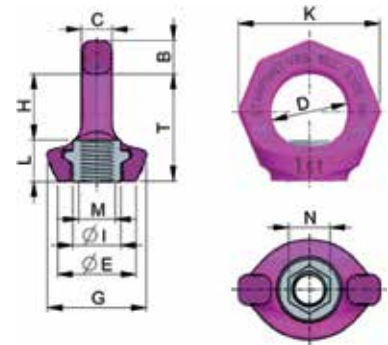
Starpoint Eye Nut – VRM



| Product Code | RUD Item No. | WLL<br>t | Dimensions (mm) |    |     |    |      |    |    |    |     |    |    |    | N. W.<br>kg |
|--------------|--------------|----------|-----------------|----|-----|----|------|----|----|----|-----|----|----|----|-------------|
|              |              |          | B               | T  | C   | D  | E    | G  | H  | I  | K   | L  | M  | N  |             |
| 09104306N    | VRM M6       | 0.1      | 9               | 28 | 7   | 20 | 23   | 28 | 16 | 13 | 37  | 11 | 6  | 9  | 0.06        |
| 09104308N    | VRM M8       | 0.3      | 11              | 34 | 8,5 | 25 | 25   | 28 | 20 | 16 | 47  | 14 | 8  | 12 | 0.1         |
| 09104310N    | VRM M10      | 0.4      | 11              | 34 | 8,5 | 25 | 25   | 28 | 20 | 16 | 47  | 14 | 10 | 12 | 0.1         |
| 09104312N    | VRM M12      | 0.75     | 13              | 42 | 10  | 30 | 30   | 34 | 25 | 20 | 56  | 17 | 12 | 14 | 0.2         |
| 09104316N    | VRM M16      | 1.5      | 15              | 51 | 14  | 35 | 35.5 | 40 | 30 | 22 | 65  | 21 | 16 | 19 | 0.3         |
| 09104320N    | VRM M20      | 2.3      | 17              | 57 | 16  | 40 | 40   | 50 | 34 | 29 | 75  | 23 | 20 | 24 | 0.5         |
| 09104324N    | VRM M24      | 3.2      | 21              | 69 | 19  | 48 | 50   | 60 | 40 | 35 | 90  | 29 | 24 | 30 | 0.9         |
| 09104330N    | VRM M30      | 4.5      | 26              | 86 | 24  | 60 | 60   | 75 | 52 | 44 | 112 | 34 | 30 | 36 | 1.5         |

The STARPOINT Eye Nut offers a functional, compact innovative design. The range is 100% electro-magnetic crack tested and painted in the unique durable RUD pink powder coat finish.

- Manufactured using high tensile CrNiMo steel.
- Side loading permissible when adjusted to the correct plane.
- Grade 10.9 metric coarse pitch thread
- Complies with EN1677.
- 4 :1 design factor on Working Load Limit.
- Star shaped (clearly distinguishable from other collared eyenuts).
- Manufactured in Germany.



### VRM Working Load Limits – G in Tonnes

| Lifting Mode |              | Single Leg |      | 2, 3 or 4 Legs |      |      |
|--------------|--------------|------------|------|----------------|------|------|
|              |              |            |      |                | 60°  | 90°  |
| Product Code | RUD Item No. |            |      |                |      |      |
| 09104306N    | VRM M6       | 0.5        | 0.1  | 0.17           | 0.14 | 0.1  |
| 09104308N    | VRM M8       | 1.0        | 0.3  | 0.52           | 0.42 | 0.3  |
| 09104310N    | VRM M10      | 1.0        | 0.4  | 0.69           | 0.56 | 0.4  |
| 09104312N    | VRM M12      | 2.0        | 0.75 | 1.3            | 1.4  | 0.75 |
| 09104316N    | VRM M16      | 4.0        | 1.5  | 2.6            | 2.1  | 1.5  |
| 09104320N    | VRM M20      | 6.0        | 2.3  | 4.0            | 3.2  | 2.3  |
| 09104324N    | VRM M24      | 8.0        | 3.2  | 5.5            | 4.5  | 3.2  |
| 09104330N    | VRM M30      | 12.0       | 4.5  | 7.8            | 6.3  | 4.5  |



• CAD drawings available upon request.



- Never exceed Manufacturer's Working Load Limit (WLL).
- Always inspect lifting points carefully before each use!
- Not suitable for swivelling under load and swivelling movement must be avoided during transportation.

# EYE NUTS

## RUD STARPOINT EYE NUTS

### Starpoint Eye Nut – RM

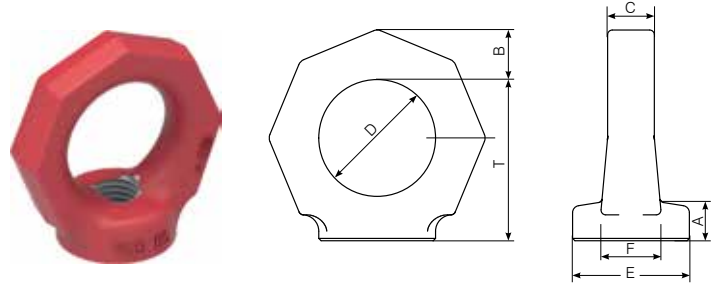


| Product Code | RUD Item No. | WLL – F2 | Dimensions (mm) |    |    |    |     |    |     | Weight |
|--------------|--------------|----------|-----------------|----|----|----|-----|----|-----|--------|
|              |              | t        | A               | B  | C  | D  | E   | F  | T   | kg     |
| 09104312*    | RM – M12     | 0.4      | 18              | 13 | 12 | 30 | 30  | 12 | 41  | 0.20   |
| 09104316*    | RM – M16     | 0.8      | 24              | 15 | 14 | 35 | 35  | 13 | 48  | 0.30   |
| 09104320*    | RM – M20     | 1.5      | 30              | 17 | 16 | 40 | 40  | 16 | 55  | 0.45   |
| 09104324*    | RM – M24     | 2.0      | 36              | 21 | 20 | 50 | 50  | 20 | 70  | 0.70   |
| 09104330*    | RM – M30     | 3.0      | 45              | 26 | 24 | 60 | 60  | 25 | 85  | 1.60   |
| 09104336*    | RM – M36     | 4.0      | 54              | 43 | 38 | 90 | 100 | 37 | 130 | 6.00   |
| 09104342*    | RM – M42     | 6.0      | 53              | 43 | 38 | 90 | 100 | 37 | 130 | 6.20   |
| 09104348*    | RM – M48     | 8.0      | 68              | 43 | 38 | 90 | 100 | 37 | 130 | 6.40   |

\* Available on indent.

The RUD RM Eye Nuts provide a higher WLL than DIN582 eye nuts in equivalent size. The octagonal shape symbolises quality class 8.

- Clear WLL shown for the most unfavourable load direction (refer F2 WLL above).
- Loaded in direction F1 (refer chart below) up to 4 times higher WLL than F2.
- 100% electromagnetic crack detected according to EN1677.
- 4 :1 design factor on Working Load Limit.
- Manufactured in Germany.



### RM Working Load Limits – G in Tonnes

| Lifting Mode |              | Single Leg – F1 |     |
|--------------|--------------|-----------------|-----|
|              |              | G               | G   |
| Product Code | RUD Item No. | Vertical Lift   | 90° |
| 09104312     | RM – M12     | 1.6             | 0.4 |
| 09104316     | RM – M16     | 4.0             | 0.8 |
| 09104320     | RM – M20     | 6.0             | 1.5 |
| 09104324     | RM – M24     | 8.0             | 2.0 |
| 09104330     | RM – M30     | 12.0            | 3.0 |
| 09104336     | RM – M36     | 16.0            | 4.0 |
| 09104342     | RM – M42     | 24.0            | 6.0 |
| 09104348     | RM – M48     | 32.0            | 8.0 |

08  
LIFTING POINTS  
& EYE BOLTS

• CAD drawings available upon request.

• **Never exceed Manufacturer's Working Load Limit**  
 • **Always inspect lifting points carefully before each use!**  
 • **The RM Eye Nut is not suitable for swivelling under load and swivelling movement must be avoided during transportation.**  
 • **To guarantee the WLL, RUD RM eye nuts must be used with a thread connection of at least quality 8.8.**

# EYE NUTS

## DIN582 COLLARED EYE NUTS

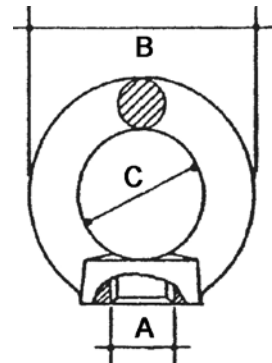
### Shouldered Eye Nuts

| Product Code | Metric Thread | WLL (kg) | Dimensions (mm) |    |
|--------------|---------------|----------|-----------------|----|
|              | A             | 0°       | B               | C  |
| 02102608     | M8            | 140      | 36              | 20 |
| 02102610     | M10           | 230      | 45              | 25 |
| 02102612     | M12           | 340      | 54              | 30 |
| 02102616     | M16           | 700      | 63              | 35 |
| 02102618     | M18           | 900      | 72              | 40 |
| 02102620     | M20           | 1,200    | 72              | 40 |
| 02102624     | M24           | 1,800    | 90              | 50 |
| 02102630*    | M30           | 3,600    | 108             | 60 |
| 02102636*    | M36           | 5,100    | 126             | 70 |
| 02102642*    | M42           | 7,000    | 144             | 80 |
| 02102648*    | M48           | 8,600    | 188             | 90 |

\* Available on indent.

Metric Thread Shouldered Eye Bolts are primarily intended as permanent attachments on equipment such as motors, control cabinets, gear boxes, etc.

- Complies with DIN582.
- For increased loading capacities refer Rud Eye Nuts page 302.
- Sizes M8 – M24, Zinc Plated, manufactured in China.
- Sizes M30 – M48, Self Colour, manufactured in the UK.



08

LIFTING POINTS  
& EYE BOLTS



• DIN582 Collared Eye Bolts are recommended for axial loading only.



- Never exceed WLL which is shown for axial loading.
- To maintain the full WLL as shown you must ensure:
  1. The eye nut is fully tightened by sufficient thread depth.
  2. The eye nut must be in the correct plane and the collar must sit evenly on the contact surface.
  3. The bolt thread length is sufficient.
  4. The material of the bolt on which the eye nut will be screwed is of adequate strength.

# EYE NUTS

## STAINLESS STEEL EYE NUTS

Certified Stainless Steel Eye Nuts

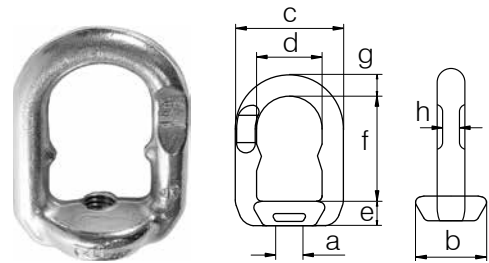
**EXCEL**<sup>®</sup>

| Product Code | Excel Item No. | WLL* | Dimensions (mm) |    |    |    |    |    |    |    | Weight kg |
|--------------|----------------|------|-----------------|----|----|----|----|----|----|----|-----------|
|              |                | t    | a               | b  | c  | d  | e  | f  | g  | h  |           |
| 02486010     | EL10I          | 0.4  | M10 x 1.50      | 31 | 51 | 30 | 14 | 44 | 11 | 6  | 0.15      |
| 02486012     | EL12I          | 0.6  | M12 x 1.75      | 39 | 56 | 32 | 15 | 48 | 12 | 7  | 0.23      |
| 02486016     | EL16I          | 1.0  | M16 x 2.00      | 44 | 66 | 37 | 17 | 60 | 14 | 9  | 0.37      |
| 02486020     | EL20I          | 2.0  | M20 x 2.50      | 44 | 66 | 37 | 17 | 60 | 14 | 9  | 0.37      |
| 02486024     | EL24I          | 3.0  | M24 x 3.00      | 52 | 81 | 48 | 21 | 75 | 17 | 11 | 0.63      |

\* WLL applicable when angle of use is limited to maximum 30° from the axis.

Stainless Steel Eye Nut. Polished finish.

- AISI316L material.
- Tested and certified.
- 5:1 design factor.
- Manufactured in France.



08

LIFTING POINTS  
& EYE BOLTS



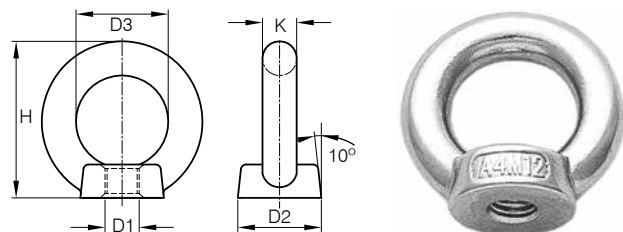
- Never exceed WLL which is shown for axial loading.
- Any angle of use beyond 30° from the axis will decrease the WLL substantially and should be avoided.

## General Purpose Commercial Stainless Steel Eye Nuts

| Product Code | MWL*  | Thread (D1) | Dimensions (mm) |    |      |    |
|--------------|-------|-------------|-----------------|----|------|----|
|              | kg    |             | D2              | D3 | H    | K  |
| 09568590     | 70    | M6          | 16              | 16 | 28.0 | 6  |
| 09568591     | 140   | M8          | 20              | 20 | 33.0 | 8  |
| 09568592     | 230   | M10         | 25              | 25 | 42.0 | 10 |
| 09568593     | 340   | M12         | 30              | 30 | 51.0 | 12 |
| 09568594     | 700   | M16         | 35              | 35 | 60.0 | 14 |
| 09568595     | 1,200 | M20         | 40              | 40 | 68.8 | 16 |

A stainless steel eye nut for general purpose applications.

- AISI316 Stainless Steel.
- Polished finish.
- Design factor 4:1 MWL to MBL.
- Manufactured in China.



- MWL: The Maximum Working Load is shown only for guidance in selecting an eye nut with sufficient strength for the intended application.



- General Purpose Commercial Stainless Steel Eye Nuts are not suitable for lifting applications.

# LIFTING & LASHING POINTS

## FERRY LASHING RINGS

Under the Maritime New Zealand rule dated May 2012, heavy vehicles including semi-trailers must have suitable lashing points when travelling on Cook Strait ferries. To meet this new rule, lashing points must have a minimum inside diameter of 80mm.

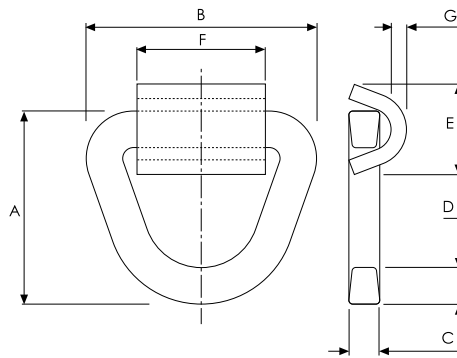
Cookes is pleased to offer lashing points that meet the Maritime New Zealand requirement.

### Ferry (Roro) Lashing Rings

| Product Code | Lashing Capacity (t) | Dimensions (mm) |     |    |    |    |     |    | Weight kg |
|--------------|----------------------|-----------------|-----|----|----|----|-----|----|-----------|
|              |                      | A               | B   | C  | D  | E  | F   | G  |           |
| 09105000     | 12                   | 151             | 176 | 25 | 28 | 70 | 100 | 12 | 2.95      |

Meet the Maritime New Zealand rule from May 2012 relating to heavy vehicles travelling on the Cook Strait ferries.

- Conform with EN29367 (ISO9367)
- Forged steel, galvanised triangular ring exceeds 80mm diameter.
- Weld-on mild steel cleat for fixing.
- Manufactured in China.



08

LIFTING POINTS  
& EYE BOLTS



- Never exceed Lashing Capacity.
- Ferry Lashing Rings are designed for lashing applications only and must not be used as lifting points.

