



Short Link Anchor Chain	226
ACCO Grade 40 Anchor Chain	226
PWB Grade L Anchor Chain	227
Chinese Grade 30 Anchor Chain	228
Anchor Chain Components	229
ACCO Oval Connecting Links	229
ACCO Forged Anchor Swivels	229
Stud Link Anchor Chain	230
General Information	230
Stud Link Chain Strength Table	231
Stud Link Components	232
Stud Link Chain & Component Weights	233
Mooring Chain & Components	234
Mooring Chains	234
Mooring Swivels	235
Mooring Chain Shackles	236
Black Snake Mooring Strop	237
Trawl Chain & Components	238
Grade 80 Trawl Chain	238
Grade 95 Trawlex® Chain	240
Grade 80 Connecting Links	241
Grade 85 Plus Connecting Links	242
G Hooks & Recessed Links	243
Hi-Load Trawl Shackles	244
Mild Steel Trawl Shackles	245
Tuna Net Chain	246
ACCO Tuna Chain	246

SHORT LINK ANCHOR CHAIN

ACCO GRADE 40 ANCHOR CHAIN

Grade 40 Short Link – DIN766 Dimensions



Product Code	ACCO Part No.	Dimensions (mm)			MWL *	Proof Load *	MBL *	Weight	Unit
		Dia	Inside Length	Outside Width	kg	KN	KN	kg/mtr	m/Drum
02611706	8612055	6	18.5	20	560	14.2	22.6	0.8	500
02611707	8612056	7	22	23	750	19.3	30.8	1.0	500
02611708	8612057	8	24	26	1,000	25.2	40.2	1.4	400
02611710	8612058	10	28	34	1,600	39.8	63.0	2.3	250
02611711	8612059	11	31	36	1,935	47.5	76.0	2.7	150
02611713	8612060	13	36	44	2,650	53.1	106.0	3.9	150

World renowned ACCO chain is manufactured in the USA to DIN766 dimensions with loads that are approximately 25-30% higher. DIN766 is a G30 chain – ACCO A4 is Grade 40.

- Extra thick hot dip galvanised finish.
- Certified high strength carbon steel Anchor Windlass Chain.
- Peerless / ACCO full certification available.
- 4:1 minimum design factor.
- Chain embossed 'A4'.
- Manufactured in the USA exclusively for Cookes.



Grade 40 Short Link – EN818-3 Dimensions



Product Code	ACCO Part No.	Dimensions (mm)			MWL *	Proof Load *	MBL *	Weight	Unit
		Dia	Inside Length	Outside Width	kg	KN	KN	kg/mtr	m/Drum
02611810	8612061	10	30	35	1,600	39.8	63.0	2.35	200
02611812	8612062	12	36	40	2,300	56.0	90.5	3.3	150
02611814	8612063	14	42	46	3,140	77.0	123.2	4.4	100



World renowned ACCO chain is manufactured in the USA. This chain is manufactured to EN818-3 specifications. Grade 40 ACCO A40 Chain offers higher working loads than mild steel Grade 30.

- Extra thick hot dip galvanised finish.
- Certified high strength carbon steel anchor chain.
- Peerless / ACCO full certification available.
- 4:1 minimum design factor.
- Chain embossed 'A40'.
- Manufactured in the USA exclusively for Cookes.



- MWL: Maximum Working Loads for guidance only in selection of chain with sufficient strength for intended application.
- Proof Load: A test load applied by the manufacturer – every link receives this test.
- MBL: The minimum load at which the chain will fail.



- Not suitable for lifting applications.
- Always check chain fit or contact your windlass manufacturer before purchase.

SHORT LINK ANCHOR CHAIN

PWB GRADE L ANCHOR CHAIN

PWB ANCHOR HIGHLIGHTS THE SERIOUS BUSINESS OF ANCHOR CHAIN.

PWB Anchor, Australian Manufacturer of Grade L Chain – New Marine Ratings.

In extremely harsh environments, especially stormy weather where shock loading is a common occurrence, the need to use high quality Anchor Chain is crucial for protecting your boat. It could even save lives.

Despite the potential risks, many people continue to use inferior chains in order to save a few dollars.

Features and Benefits of PWB Anchor Grade L Chains.

PWB Anchor Chain is manufactured in short link configuration and meets the requirements of Australian Standard AS2321.

PWB Grade L Chain has a design factor of 4:1 for marine use, which makes it ideal for use as an Anchoring Chain.

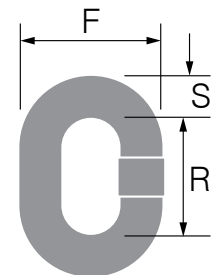
100% proof tested, batch destructively tested and bend tested on links. All chain is stamped and can be identified to Test Certificate and Manufacturer.



Grade L – AS2321 Dimensions



Product Code	PWB Item No.	Size	MWL *	Dimensions (mm)			Weight
		mm	t	S	R	F	kg/m
02611006	40074	6	0.5	6.3	18.8	21.6	0.9
02611008	40076	8	0.8	8.0	23.8	27.0	1.5
02611010	40078	10	1.26	10.0	29.8	34.3	2.3
02611013	40080	13	2.1	12.7	38.0	43.0	3.6
02611016	40082	16	3.2	16.0	47.8	54.9	5.7
02611020	40084	20	5.0	20.0	59.2	68.5	9.0
02611022	40086	22	6.3	22.0	64.9	77.0	10.9



- High quality hot dip galvanised.
- Chain embossed PWB-L.
- Manufactured in accordance with AS2321.
- 4:1 minimum design factor.
- Full certification available.
- Manufactured in Australia.



• MWL: Maximum Working Loads for guidance only in selection of chain with sufficient strength for intended application.

• Always check chain fit or contact your windlass manufacturer before purchase.

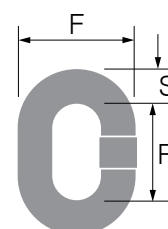
SHORT LINK ANCHOR CHAIN

CHINESE GRADE 30 ANCHOR CHAIN

Short Link – Economy

Product Code	Specification	Size	MWL*	Dimensions (mm)			Weight
		mm	t	S	R	F	kg/m
02611106M	DIN766	6	0.40	6.0	18.5	20.0	0.75
02611107M	DIN766	7	0.50	7.0	22.0	23.0	1.10
02611108M	DIN766	8	0.65	8.0	24.0	26.0	1.35
02611110M	DIN766	10	1.00	10.0	28.0	31.0	2.25
02611112M	EN818	12	1.36	12.0	36.0	40.0	3.10
02611113M	DIN766	13	1.80	13.0	36.0	47.0	3.90
02611114M	DIN766	14	2.30	14.0	41.0	47.0	4.50
02611116M	DIN766	16	3.00	16.0	45.0	54.0	5.70

- DIN766 or EN818 (12mm only) dimensions as detailed above.
- Hot dip galvanised finish.
- Test certificates available.
- Manufactured in China.



• MWL: Maximum Working Loads for guidance only in selection of chain with sufficient strength for intended application.



• Not suitable for lifting applications.

ANCHOR CHAIN COMPONENTS

ACCO OVAL CONNECTING LINKS

Grade 30 Oval Connecting Links



Product Code	ACCO Part No.	Trade Size		MWL*	Dimensions (in)		Weight gm
		in	mm		A	B	
02643306	440840403	1/4	6	590	0.88	0.44	25
02643308	440840503	5/16	8	862	0.94	0.50	50
02643310	440840603	3/8	10	1,202	1.20	0.56	80
02643312	440840802	1/2	13	2,042	1.44	0.66	160
02643316	6800035	5/8	16	4,535	1.89	0.78	340



- Designed for joining short link mild steel chain.
- Fully hot dip galvanised.
- 4:1 minimum design factor.
- Certification available.
- Quality connecting links from Peerless ACCO, USA.

06

MARINE CHAIN & ACCESSORIES

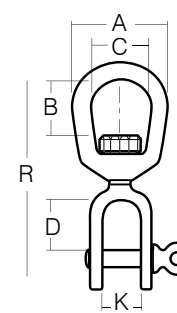
ACCO FORGED ANCHOR SWIVELS

Forged Jaw-Eye Anchor Swivels



Product Code	ACCO Part No.	Trade Size		MWL*	Dimensions (in)							Weight gm
		in	mm		A	B	C	K	D	Ø Pin	R	
02122006	8171241	1/4	6	386	1,250	0,688	0,750	0,469	0,875	0,250	2,625	95
02122008	8171341	5/16	8	567	1,625	0,813	1,000	0,500	0,875	0,313	2,938	145
02122009	8171441	3/8	10	1,021	2,000	0,938	1,250	0,625	1,063	0,375	3,625	275
02122013	8171541	1/2	13	1,634	2,500	1,313	1,500	0,750	1,313	0,500	4,500	560
02122016	8171641	5/8	16	2,360	3,000	1,563	1,750	0,938	1,500	0,625	5,313	1,160

- Drop Forged.
- Fully hot dip galvanised.
- 4:1 minimum design factor.
- Certification available.
- Quality anchor swivels from Peerless ACCO, USA.



• MWL: Maximum Working Loads for guidance only in selection of components with sufficient strength for intended application.



• Not suitable for lifting applications.

STUD LINK ANCHOR CHAIN

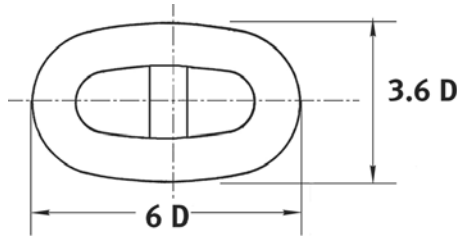
GENERAL INFORMATION

Stud Link Anchor Chain

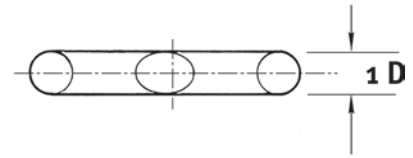
Stud Link Anchor Chain is cross-braced on each link to provide increased strength and resistance to crushing. The individual links are named Common Links, with a standard full chain length of 27.5m referred to as a shot or a cable.



Common Link (C)



Common Link (C) with Dimensions



Note: D = Chain material diameter.

Chain shots are usually joined using Kenter Joining Shackles.

Stud Link Chain is most commonly used on larger ocean going vessels such as merchant ships, commercial fishing vessels and super yachts.

Stud Link Anchor Chain conforms with Standard ISO1704 and is supplied with Lloyds (LR) certification. Other approvals are available on request.

- Available in self-colour or hot dip galvanised finish.
- Manufactured in China.



• Not suitable for lifting applications.

STUD LINK ANCHOR CHAIN

STUD LINK CHAIN STRENGTH TABLE

Strength Table For Grades U2 & U3

Chain Diameter		Grade U2 (kg)		Grade U3 (kg)	
mm	in	Proof Load	Breaking Load	Proof Load	Breaking Load
12.5	1/2	6,700	9,400	9,400	13,500
14.0	9/16	9,400	11,800	11,800	16,800
16.0	5/8	10,900	15,300	15,300	22,000
17.5	11/16	13,000	18,300	18,300	26,100
19.0	3/4	15,300	21,500	21,500	30,700
20.5	13/16	17,800	24,900	24,900	35,600
22.0	7/8	20,400	28,600	28,600	40,900
24.0	15/16	24,200	33,900	33,900	48,500
26.0	1.0	28,300	39,700	39,700	56,700
28.0	1-1/8	32,700	45,800	45,800	65,500
30.0	1-3/16	37,500	52,400	52,400	74,900
32.0	1-1/4	42,500	59,400	59,400	84,900
34.0	1-5/16	47,700	66,800	66,800	95,600
36.0	1-7/16	53,300	74,600	74,600	107,000
38.0	1-1/2	59,200	82,800	82,800	118,000
40.0	1-9/16	65,300	91,400	91,400	131,000
42.0	1-5/8	71,700	100,000	100,000	143,000
44.0	1-3/4	78,400	110,000	110,000	157,000
46.0	1-13/16	85,300	119,000	119,000	171,000
48.0	1-7/8	92,600	130,000	130,000	185,000
50.0	2.0	100,000	140,000	140,000	200,000
52.0	2-1/16	108,000	151,000	151,000	215,000
54.0	2-1/8	116,000	162,000	162,000	231,000
56.0	2-3/16	124,000	174,000	174,000	248,000
58.0	2-5/16	132,000	185,000	185,000	265,000
60.0	2-3/8	141,000	198,000	198,000	282,000
62.0	2-7/16	150,000	210,000	210,000	300,000
64.0	2-1/2	159,000	223,000	223,000	319,000
66.0	2-5/8	169,000	236,000	236,000	337,000
68.0	2-11/16	178,000	250,000	250,000	357,000
70.0	2-3/4	188,000	263,000	263,000	376,000
73.0	2-7/8	203,000	285,000	285,000	407,000
76.0	3.0	219,000	307,000	307,000	438,000



Self Colour finish



Hot Dip Galvanised finish

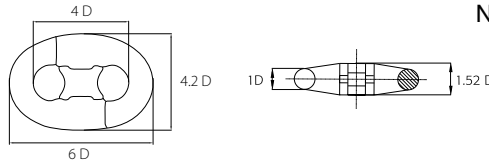


• Not suitable for lifting applications.

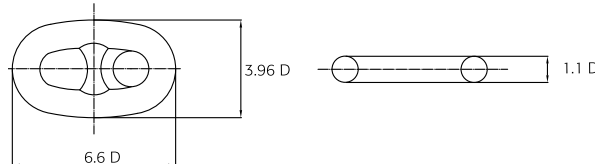
STUD LINK ANCHOR CHAIN

STUD LINK COMPONENTS

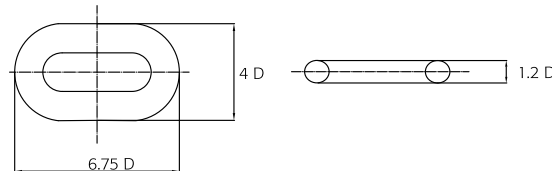
Note: D = Chain material diameter.



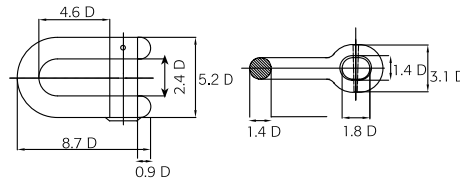
Kenter Shackle (KS): A joining shackle used to join two stud link chain elements together.



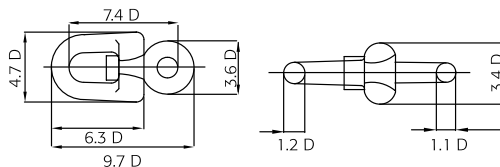
Enlarged Link (EL): The Enlarged Link is most often used to connect an End Link and Swivel to a Common Link.



End Link (E): The studless End Link is designed to accept components such as Anchor Shackles.

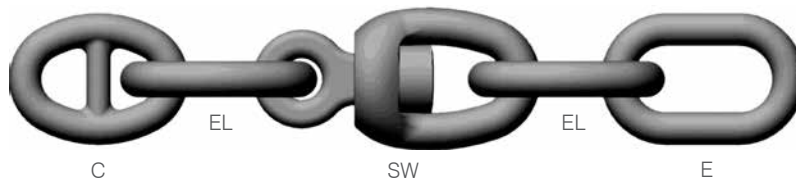


D-Type Anchor Shackle (AS): The D-Type Anchor Shackle is used to connect the stud link chain to the anchor.



Swivel (SW): The Swivel is most commonly supplied as an assembly known as a Swivel Forerunner which consists of:

Common Link (C) + Enlarged Link (EL) + Swivel (SW) + Enlarged Link (EL) + End Link (E)



The Common Link (C) connects to another Common Link (C) in the main Anchor Chain by means of a Kenter Shackle (KS). At the other end, the studless End Link (E) allows connection to an Anchor Shackle (AS).

- Components supplied with Lloyds certification.
- Available in self colour or galvanised finish.
- All stud link chain and components imported to order.
- Manufactured in China.



• Not suitable for lifting applications.

STUD LINK ANCHOR CHAIN

STUD LINK CHAIN & COMPONENT WEIGHTS

Approximate Weights Table

Diameter	Stud Link Chain Weight		Common Link	Enlarged Link	End Link	Joining Shackle Kenter	Joining Shackle Type D	Anchor Shackle Type D	Swivel
	mm	kg/m							
12.5	3.5	96	0.17	0.23	0.23	0.39	0.8	1.1	0.9
14.0	4.4	121	0.24	0.32	0.36	0.51	1.1	1.3	1.3
16.0	5.8	160	0.36	0.50	0.51	0.62	1.3	1.6	1.7
17.5	7.0	193	0.47	0.74	0.68	0.82	1.6	2.0	2.1
19.0	8.1	223	0.60	0.88	0.89	1.00	1.8	2.5	2.5
20.5	10.0	275	0.75	1.10	1.13	1.35	2.1	3.3	3.1
22.0	11.1	305	0.93	1.25	1.28	1.6	2.5	4.0	3.5
24.0	13.3	366	1.21	1.70	1.77	2.0	3.5	5.0	5.0
26.0	15.7	432	1.55	2.15	2.2	2.7	4.3	6.0	6.0
28.0	18.3	503	1.9	2.8	2.9	3.3	5.0	8.0	7.5
30.0	21.0	578	2.4	3.2	3.3	3.9	7.0	9.5	9.0
32.0	23.9	657	2.9	3.9	4.0	4.6	7.5	12.0	11.0
34.0	27.0	743	3.4	4.7	5.0	5.8	9.5	14.0	13.5
36.0	30.2	831	4.0	5.5	5.9	6.6	11.0	17.0	16.0
38.0	33.7	927	4.7	6.1	6.8	7.8	13.0	20.0	19.0
40.0	37.1	1,020	5.5	7.1	8.0	9.1	15.0	23.0	23.0
42.0	40.5	1,114	6.4	8.4	9.6	10.5	17.5	26.0	27.0
44.0	44.3	1,218	7.4	10.0	11.2	12.2	20.0	29.0	32.0
46.0	48.5	1,334	8.5	11.5	13.0	14.0	22.5	33.0	37.0
48.0	52.8	1,452	9.8	13.1	15.0	16.0	26.0	37.0	44.0
50.0	57.0	1,568	11.0	15.0	17.0	18.0	29.0	41.0	57.0
52.0	62.0	1,705	13.0	17.0	20.0	20.0	31.0	45.0	57.0
54.0	66.0	1,815	14.0	19.0	22.0	20.0	34.0	50.0	67.0
56.0	71.0	1,953	16.0	21.0	23.0	24.0	38.0	54.0	67.0
58.0	77.0	2,118	17.0	23.0	25.0	28.0	44.0	65.0	80.0
60.0	83.0	2,283	19.0	25.0	27.0	28.0	48.0	70.0	95.0
62.0	88.0	2,420	21.0	28.0	30.0	33.0	52.0	76.0	95.0
64.0	94.0	2,585	23.0	31.0	34.0	38.0	57.0	82.0	112.0
66.0	100.0	2,750	25.0	34.0	38.0	38.0	66.0	94.0	130.0
68.0	107.0	2,943	27.0	37.0	42.0	44.0	70.0	101.0	130.0
70.0	114.0	3,135	30.0	40.0	45.0	44.0	75.0	108.0	152.0
73.0	124.0	3,410	34.0	45.0	52.0	51.0	87.0	124.0	172.0
76.0	135.0	3,713	39.0	50.0	59.0	58.0	99.0	141.0	194.0

Note: Larger diameter chain and components available on request.



• Not suitable for lifting applications.

MOORING CHAIN & COMPONENTS

MOORING CHAINS

PROOF COIL CHAINS ARE NOT ALL CREATED EQUAL!

PWB Anchor utilises steel from OneSteel's integrated steel mill at Whyalla, South Australia. These Blast Furnace steels deliver the integrity required in demanding chain applications. With a controlled chemistry and refined grain structure, PWB Anchor can provide the right product to operate at the same critical levels time after time.

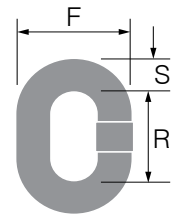
Steel integrity is the hidden element not always considered in a mooring chain purchasing decision, but by choosing PWB Anchor chain you are building in security of product performance, safety and operating life of your chain.

Cookes is proud to offer the highest quality regular link self colour proof coil chain manufactured by PWB Anchor, Australia in sizes 10mm through 24mm.

Regular Link Proof Coil Chain Self Colour



Product Code	PWB Item No.	Size	MWL*	Dimensions (mm)			Weight
		mm	t	S	R	F	kg/m
02609010	40029	10	0.86	9.5	43.4	35.5	1.70
02609013	40034	13	1.50	12.0	51.7	44.5	2.80
02609016	40038	16	2.31	16.0	59.6	57.3	5.30
02609020	40040	20	3.67	20.0	73.3	71.0	8.15
02609024	40042	24	5.34	24.0	87.0	84.8	11.60



Manufactured from a low grade carbon steel, this versatile range of chain is proof tested to at least twice the maximum load recommended for normal use.

- Manufactured in Australia.

Stud Link Mooring Chain

Product Code	Chain Ø	Approximate Breaking Load	Approximate Weight
	mm	t	kg/m
02600032	32	35	20
02600040	40	55	35
02600050	50	90	50



Most commonly used as bottom chain on a swing mooring to provide required weight and strength, particularly in heavy tides.

- New chain manufactured specifically for mooring or aquaculture applications.
- No variable dimensions as often found with second-hand stud link chains.
- Manufactured in China for Cookes.

- MWL: Maximum Working Loads for guidance only in selection of chain with sufficient strength for intended application.



• Not suitable for lifting applications.
• Stud Link Mooring Chain is specifically manufactured for that application and is not suitable for ship's anchor chain use.

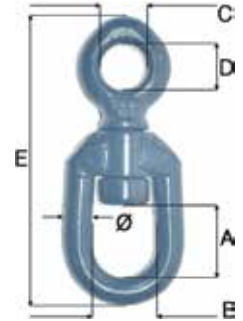
MOORING CHAIN & COMPONENTS

MOORING SWIVELS

Blueline® Forged Eye-Eye Swivels – FOC Model



Product Code	Blueline Item No.	Size	MWL*	Dimensions (mm)					Weight kg
		Ømm	t	A	B	C	D	E	
17393116	A 16 FOC	16	2.4	30	28	22	22	150	0.87
17393119	A 19 FOC	19	3.8	42	40	28	28	185	1.30
17393122	A 22 FOC	22	5.3	57	48	34	34	230	2.20
17393125	A 25 FOC	25	7.2	63	52	37	37	265	3.65
17393128	A 28 FOC	28	9.0	65	52	37	37	280	4.30

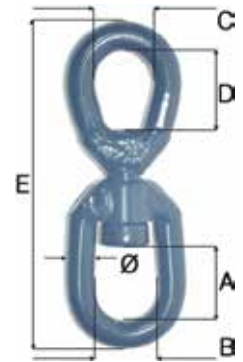


- Forged Alloy Steel.
- From the famous Blueline® range.
- 5:1 design factor.
- Blue painted finish.

Blueline® Forged Eye-Eye Swivels – ST Model



Product Code	Blueline Item No.	Size	MWL*	Dimensions (mm)					Weight kg
		Ømm	t	A	B	C	D	E	
17393101	A 10 ST	10	0.6	32	28	25	31	123	0.23
17393102	A 12 ST	12	1.1	35	30	28	33	140	0.40

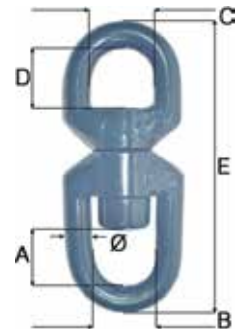


- Forged Alloy Steel.
- From the famous Blueline® range.
- 5:1 design factor.
- Blue painted finish.

Blueline® Forged Eye-Eye Swivels – STC Model



Product Code	Blueline Item No.	Size	MWL*	Dimensions (mm)					Weight kg
		Ømm	t	A	B	C	D	E	
17393132	A 32 STC	32	12.5	60	57	55	50	305	7.20
17393138	A 38 STC	38	15.4	72	60	55	55	340	9.90



- Forged Alloy Steel.
- From the famous Blueline® range.
- 5:1 design factor.
- Blue painted finish.

• MWL: Maximum Working Loads for guidance only in selection of chain with sufficient strength for intended application.



The famous Blueline® Swivels have been manufactured to high quality standards by the Markussen family in Denmark for over 40 years, and are proudly distributed in New Zealand by Cookes.



• Not suitable for lifting applications.

MOORING CHAIN & COMPONENTS

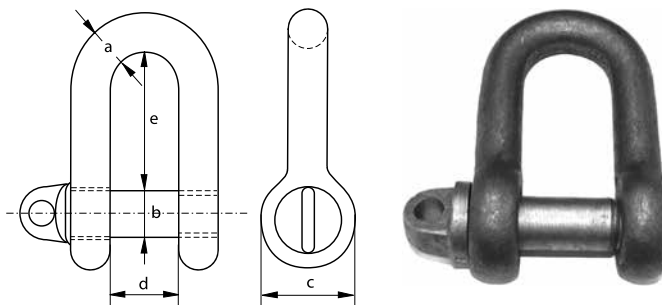
MOORING CHAIN SHACKLES

Self Colour Mild Steel Large Dee Shackles – Screw Pin

Product Code	Dimensions (mm)					Weight
	a	b	c	d	e	kg
02298016	16	16	32	32	64	0.48
02298019	19	19	38	38	76	0.95
02298022	22	22	44	44	88	1.26
02298026	25	25	50	50	100	1.85
02298029	28	28	56	56	112	2.60
02298032	32	32	64	64	128	3.68
02298035	35	35	70	70	140	5.00
02298038	38	38	76	76	152	6.50

These self-colour mild steel dee shackles are designed specifically for connection to self-colour mild steel chains in mooring applications to reduce the possibility of galvanic corrosion.

- Mild steel, grade 30.
- Uncertified.
- Self colour finish.
- Manufactured in China.



• Check with your Cookes branch if dimensions are critical for intended application.



• Commercial grade uncertified shackles must never be used for lifting applications.

MOORING CHAIN & COMPONENTS

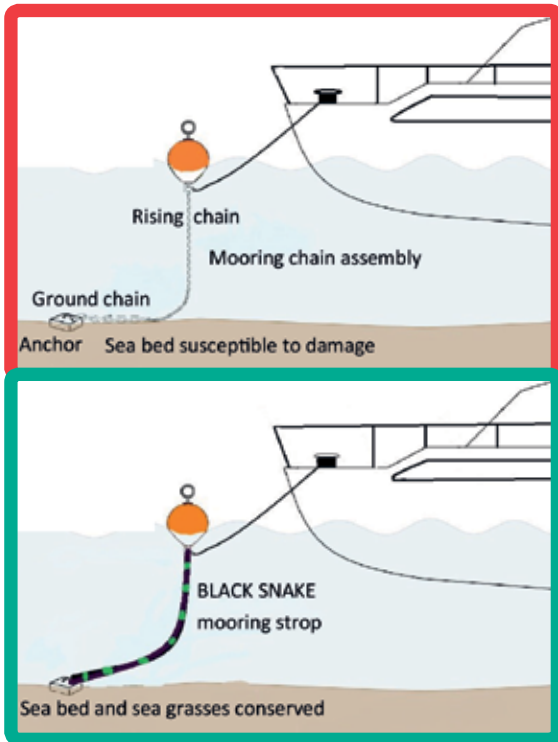


BLACK SNAKE MOORING STROP

An Environmentally Sensitive Alternative to Chain.

Black Snake Nylon Mooring Strops replace ground/rising chains and are ideal for marine mooring applications. Unlike chains, the Black Snake Mooring Strops minimize damage to the sea bed's vegetation around the mooring block/anchor. The smooth stretch of the nylon core absorbs shock loads in the wave and tidal conditions of the marine environment.

The embedded thimbles (heavy duty galvanized or stainless) eliminate fraying of the nylon fibres and the thick rubber cover maintains the full strength of the nylon in salt water and also protects the thimbles. Approved by Parks Victoria in Australia for installation in Victoria's bays and recently introduced to New Zealand by **Cookes**.



Features

- Friendly to the marine environment.
- Abrasion/cut resistant rubber protects the inner nylon fibres from the elements and keeps out water, mud and creatures. The Mooring Strop is UV stabilised and salt water resistant allowing it to be virtually maintenance free for years.
- High strength Nylon 6.6 core with smooth stretch up to 20%.
- Very flexible and light weight and suitable with various attachment devices.
- Easy to install with galvanised thimble eyelets embedded into the rubber casing. Heavy duty stainless steel thimbles also available on request for 8 and 12 tonne strops.
- Special thimble eye configurations can be requested.
- Manufactured in Australia.



Breaking Load & Weight Chart

	8 Tonne	12 Tonne	20 Tonne	30 Tonne	50 Tonne
4 Metre Length	4 kg	5 kg	6 kg	10 kg	17 kg
6 Metre Length	5 kg	6 kg	8 kg	12 kg	20 kg
10 Metre Length	7 kg	9 kg	12 kg	18 kg	32 kg
15 Metre Length	10 kg	12 kg	16 kg	25 kg	42 kg
20 Metre Length	13 kg	15 kg	21 kg	30 kg	56 kg
A.S. 1138 Galvanised Thimble Size	22mm	22mm	24mm	28mm	36mm
Stainless 316 Heavy Duty Steel Thimble Option	19mm	19mm	—	—	—

Break strength is the applied load at which the mooring strop fails. Higher break strengths up to 100t and different lengths up to 20m available.

Black Snake Mooring Strops are supplied to order from Australia.

TRAWL CHAIN & COMPONENTS

GRADE 80 TRAWL CHAIN

Cookes is proud to be New Zealand's authorised distributor for Peerless ACCO (American Chain Company). The ACCO brand name and high quality chain has maintained a strong presence in the marine industry since 1912 and remains a market leader today.

Mid Link Trawl Chain



Product Code	ACCO Item No.	Size	MBL *	Dimensions (mm)		Weight
		mm	t	Inside Length	Inside Width	kg/m
02635013P	TML13-8	13	21.4	52	22	3.4
02635016P	TML16-8	16	32.2	64	24	5.1
02635019P	TML19-8	19	45.4	76	29	7.2

- Grade 80 high strength special steel hardened and tempered.
- Black surface finish.
- Excellent resistance to shock loading and wear.
- Manufactured in the USA.



Long Link Trawl Chain



Product Code	ACCO Item No.	Size	MBL *	Dimensions (mm)		Weight
		mm	t	Inside Length	Inside Width	kg/m
02636009P	TLL9-8	9	10.2	53	15	1.4
02636011P	TLL11-8	11	15.4	64	19	2.2
02636013P	TLL13-8	13	21.4	80	23	2.9
02636016P	TLL16-8	16	32.2	100	26	4.4

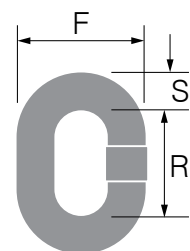
- Grade 80 high strength special steel hardened and tempered.
- Black surface finish.
- Excellent resistance to shock loading and wear.
- Manufactured in the USA.

Mid Link Trawl Chain – 22mm



Product Code	ACCO Item No.	Size	MBL *	Dimensions (mm)			Weight
		mm	t	S	R	F	kg/m
02635022	MLL22-8	22	61	22	88	76	9.4

- Grade 80 special alloy steel, hardened and tempered.
- Self colour finish.
- Manufactured in Norway.



* MBL: Minimum Breaking Load.



• Not suitable for lifting applications.

TRAWL CHAIN & COMPONENTS

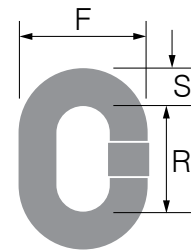
GRADE 80 TRAWL CHAIN (AUSTRALIAN MADE)

Cookes is proud to distribute quality Australian manufactured PWB Anchor Trawl Chain. PWB Anchor offers over 90 years of manufacturing expertise.

Mid Link Trawl Chain



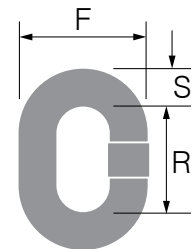
Product Code	PWB Item No.	Chain Size	MBL	Dimensions (mm)			Weight
		mm	t	S	R	F	kg/m
02635113	42520	13	21.6	12.7	50.8	45.8	3.0
02635216	42018	16	32.7	16.0	59.6	57.3	5.1
02635219	42019	19	46.2	19.0	76.0	66.5	7.2



Long Link Trawl Chain



Product Code	PWB Item No.	Chain Size	MBL	Dimensions (mm)			Weight
		mm	t	S	R	F	kg/m
02636213	42017	13	21.6	12.7	80.5	49.0	2.9



PWB Trawl Chain is suitable for all methods of commercial fishing.

- Specialised heat treatment process ensures high strength.
- Maximum hardness (36-40Rc) to avoid hydrogen embrittlement.
- All PWB trawl chain embossed with TRAWL-80.
- Manufactured in Australia.

06
MARINE CHAIN &
ACCESSORIES

 • Not suitable for lifting applications.

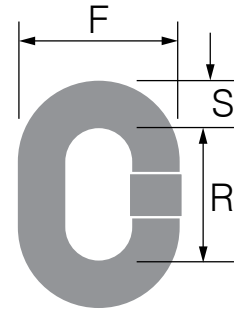
TRAWL CHAIN & COMPONENTS

GRADE 95 TRAWLEX® CHAIN

Mid Link Trawl Chain



Product Code	Size	MBL *	Dimensions (mm)			Weight kg/m
	mm		S	R	F	
02400516	16	41.0	16	64	54.5	4.90
02400519	19	57.0	19	76	65.0	6.95



*MBL = Minimum Breaking Load

Crosby Trawlex® trawl chain with improved resistance to stress corrosion and materials optimised for low temperature conditions.

- Manufactured from high strength, wear and shock resistant special steel.
- Self colour finish.
- Manufactured in France.

06

MARINE CHAIN & ACCESSORIES



• Not suitable for lifting applications.

TRAWL CHAIN & COMPONENTS

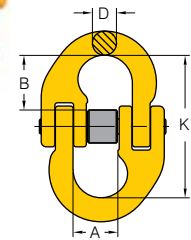
GRADE 80 CONNECTING LINKS

Yoke Connectors maintain the strength and integrity of your Grade 80 Trawl Chain. Tested and certified, and available in painted or Dacromet® Corrosion protected finish.

Connector – Painted Finish



Product Code	MBL*	Chain Dia. mm	Dimensions (mm)				N. W. kg
	t		A	B	D	K	
02459010	12.6	10	25	26	11	68	0.3
02459013	21.2	13	30	35	16	91	0.7
02459016	32.0	16	36	38	19	100	1.1
02459019	50.0	19	42	46	22	122	1.9



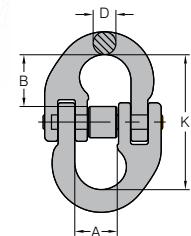
* MBL=Minimum Breaking Load

- Spare pins and bush sets available.
- Manufactured in Taiwan.

Connector with Dacromet® Surface Finish



Product Code	MBL*	Chain Dia. mm	Dimensions (mm)				N. W. kg
	t		A	B	D	K	
02459310	12.6	10	25	26	11	68	0.3
02459313	21.2	13	30	35	16	91	0.7
02459316	32.0	16	36	38	19	100	1.1
02459319	50.0	18, 20	42	46	22	122	1.9
02459322	60.0	22	49	59	24	152	3.0
02459326	84.8	26	55	62	30	162	4.6



* MBL=Minimum Breaking Load

- With smooth pin specifically designed for marine applications.
- Spare pins and bush sets available.
- Manufactured in Taiwan.



Dacromet® is a time proven coating system that does not require acid pickling or involve electroplating. Dacromet® offers excellent corrosion protection.

Salt Spray Test (ISO9227)

- 240 hours without white rust.
- 600 hours without red rust.



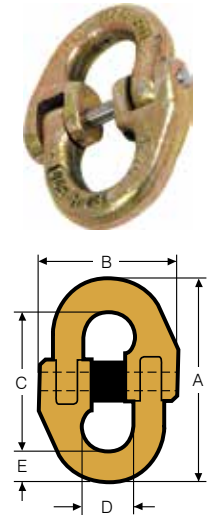
TRAWL CHAIN & COMPONENTS

GRADE 85 PLUS CONNECTING LINKS

Trawlex Connecting Links



Product Code	Trawlex Item No.	ABL*	Dimensions (mm)					Weight
		t	A	B	C	D	E	kg
02419007	TL7	7.0	67	47	48	14.3	9	0.11
02419010	TL10	16.9	89	63	64	19.2	13	0.36
02419013	TL13	25.7	118	84	85	26.5	17	0.66
02419016	TL16	36.0	144	95	106	32.0	19	1.08
02419019	TL19	49.0	168	114	122	38.5	23	1.77
02419023	TL23	73.8	206	140	150	49.0	28	2.80
02419026	TL26	92.0	230	160	166	57.0	32	4.40
02419032	TL32	144.0	278	209	200	63.0	39	8.40



* ABL: Average Breaking Load; based on destruction tests taken over 8 years of manufacture (2008 – 2015).

Crosby Trawlex® Grade 85 Plus Connectors. Designed for the rigours of deep sea fishing.

- Improved resistance to stress corrosion.
- Spare Pins and Bush Sets available.
- Manufactured in the U.K.

06

MARINE CHAIN & ACCESSORIES



TL Connectors may also be used for lifting applications as a Grade 80 component – refer page 18 for Working Load Limits (WLL).



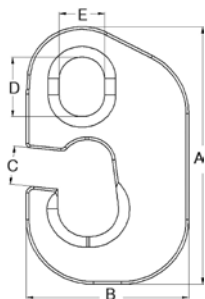
TRAWL CHAIN & COMPONENTS

G HOOKS & RECESSED LINKS

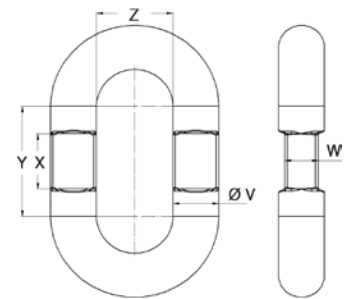
G Hooks



Product Code	Plate Thick	Dimensions (mm)					Suit Recessed Link
	mm	A	B	C	D	E	Product Code
07515016	16	151	90	18	31	21	07520022
07515026	25	195	107	23	45	33	07520032
07515040	40	195	118	29	45	33	07520036
07515045	45	230	130	33	60	46	07520038



G Hook



Recessed Link

06

MARINE CHAIN & ACCESSORIES

Recessed Links



Product Code	Material Ø	Dimensions (mm)					Suit G Hook
	mm	Ø V	W	X	Y	Z	Product Code
07520022	22	22	15	20	100	50	07515016
07520032	32	32	19	30	125	50	07515026
07520036	36	36	26	45	90	60	07515040
07520038	38	39	30	50	100	62	07515045

- Designed to suit the demands of commercial trawling.
- Manufactured in New Zealand.



• Not suitable for lifting applications.

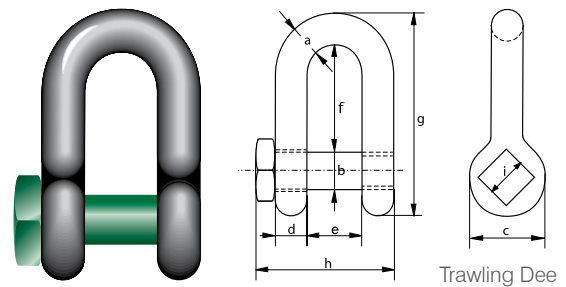
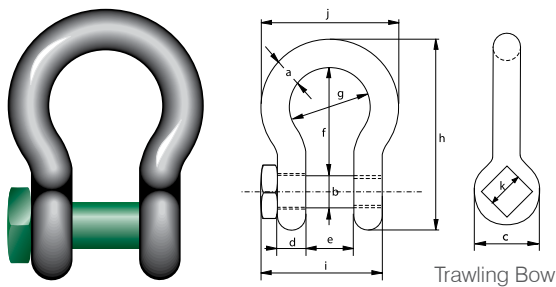
TRAWL CHAIN & COMPONENTS

HI-LOAD TRAWL SHACKLES

Green Pin® Trawling Bow – Square Headed Screw Pin



Product Code	WLL	Dimensions (mm)											Weight
	t	a	b	c	d	e	f	g	h	i	j	k	kg
02314322	4.75	19	22	46	19	31	76	51	129	82	89	32	1.00
02314326	6.50	22	25	52	22	36	83	58	144	93	102	32	1.44
02314328	8.50	25	28	59	25	43	95	68	164	108	118	36	2.21
02314332	9.50	28	32	66	28	47	108	75	185	120	131	41	3.18
02314335	12.00	32	35	72	32	51	115	83	201	137	147	50	4.32
02314338	13.50	35	38	80	35	57	133	92	227	149	162	50	5.67
02314342	17.00	38	42	88	38	60	146	99	249	164	175	60	7.36
02314351	25.00	45	50	103	45	74	178	126	300	192	216	60	12.38



Green Pin® Trawling Dee – Square Headed Screw Pin



Product Code	WLL	Dimensions (mm)										Weight
	t	a	b	c	d	e	f	g	h	i	kg	
02314216	2.00	13.5	16	34	13	22	43	81	57.5	22	0.32	
02314219	3.25	16	19	40	16	27	51	97	71	27	0.58	
02314222	4.75	19	22	46	19	31	59	112	82	32	0.92	
02314225	6.50	22	25	52	22	36	73	134	93	32	1.33	
02314228	8.50	25	28	59	25	43	85	154	108	36	2.03	
02314232	9.50	28	32	66	28	47	90	167	120	41	2.88	
02314235	12.00	32	35	72	32	51	94	180	137	50	3.96	
02314238	13.50	35	38	80	35	57	115	209	149	50	5.24	
02314242	17.00	38	42	88	38	60	127	230	164	60	6.80	

The highest quality trawl shackles with exceptional strength to weight ratio.

- 6:1 design factor.
- Hot dipped galvanised finish.
- Certification available.
- Manufactured in The Netherlands.



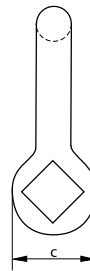
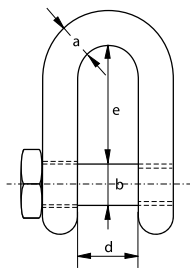
TRAWL CHAIN & COMPONENTS

MILD STEEL TRAWL SHACKLES

Self Colour Dee Trawl Shackles – Square Headed Screw Pin

Product Code	Dimensions (mm)					Weight
	a	b	c	d	e	kg
02314009	10	10	20	20	40	0.12
02314013	12	12	24	24	48	0.21
02314016	16	16	32	32	64	0.49
02314019	19	19	38	38	76	0.96
02314022	22	22	44	44	88	1.28
02314026	25	25	50	50	100	1.88
02314028	28	28	56	56	112	2.65

- Mild steel, Grade 30 material.
- Uncertified.
- Self coloured finish.
- Manufactured in China.



• Check with your Cookes branch if dimensions are critical for intended application.



• Not suitable for lifting applications.

TUNA NET CHAIN

ACCO TUNA CHAIN

Hot Dip Galvanised Tuna Net Chain



Product Code	ACCO Item No.	Dimensions (mm)			MWL**	Weight (kg)			Length (m)
		Diameter	Inside Length	Inside Width		t	m	Drum	
02614010*	520140692	10	33.8	14.5	3.00	2.2	268	122	
02614011*	520140792	12	34.8	19.1	3.97	3.2	291	91	
02614013*	520140892	13	43.7	19.1	5.12	3.8	232	61	
02614014*	520140992	14	43.2	21.6	5.50	4.5	275	61	
02614016*	520141092	16	49.3	23.1	7.17	5.7	257	45	

* Available on indent.

**MWL: Maximum Working Loads for guidance only in selection of chain with sufficient strength for intended application.

THE BEST CHAIN FOR A TOUGH JOB

ACCO uses high quality steel, especially formulated and heat treated for tuna fishing. Every heat treated lot is sampled and destructively tested for material strength and link elongation – assuring compliance to designed criteria. All Tuna Net Chain is then proof tested, 100%, every link.

The ACCO Tuna Net Chain is continuously hot dip galvanised to provide the deep strong protective coating you have come to expect which has over 30% more zinc per unit volume than mechanical coating.

In the hot dip process, the galvanised zinc coating is alloyed with the base steel creating a metallurgical bond that is several orders of magnitude stronger than mechanical bonding.

- Manufactured in the USA.



• Not suitable for lifting applications.

